

**Ducted Single Phase  
Split System Air Conditioner**

**Technical Data**  
**ISD 101Q / OSA 100**



**Optional  
HAN-L6 Controller**

**Extra Long Life  
Epoxy Coated Outdoor Coil**

**Nominal Cooling Capacity  
10.1 kW**

# ISD 101Q / OSA 100 DUCTED SINGLE PHASE SPLIT SYSTEM AIR CONDITIONER

## GENERAL

- ISD 101Q** - Indoor unit
- OSA 100** - A general designation for outdoor unit
- OSA 100C** - Outdoor unit, cooling only version
- OSA 100R** - Outdoor unit, reverse cycle version

The ISD indoor unit, together with its associated OSA outdoor unit, provides a single phase split system air conditioner designed and developed to comply with and exceed AS/NZS 3823 specified conditions (i.e. guaranteed cooling cycle performance at 43°C outdoor temperature).

## APPLICATIONS

These units have been specifically developed for air conditioning of light commercial and residential premises, e.g. offices, motels, shops and homes.

## Air Flow Selection

The nominal indoor air flow and temperature/humidity conditions meet ASHRAE rating standards (incl. 50%RH). If the air returning to the indoor coil is regularly expected to be above 50%RH, then the coil face velocity should be limited to be 2.5 m/s or less (refer Air Flow graph; 2.5 m/s is clearly marked).

High humidity levels can occur in tropical or subtropical conditions, and/or when heavily moisture laden fresh air is introduced. Consideration must always be given to selecting an air flow and face velocity that avoids water carry-over problems.

Applications using full or high proportions of fresh air should be referred to your nearest **temperzone** sales office to establish the correct selection of units.

## FEATURES

**Efficient.** The outdoor unit incorporates a high efficiency scroll compressor. Heat exchange coils incorporate inner grooved (rifled) tube for better heat transfer.

**Convenient.** The system requires only a single phase power supply - which is readily available and requires less wiring. A start assist facility is also included.

**Slimline.** The compact up-right design of the outdoor unit requires only a 100 mm gap on the coil side where installation is against a wall. Its slimline cabinet is particularly practical where there is restricted space, e.g. side access pathways, balconies, narrow ledges, etc. The unit is free standing, but can be fitted on a wall using the optional wall mounting brackets.

**Quiet.** The outdoor unit's coil design permits low fan speeds and hence low noise levels. The compressor is isolated in a built-in, insulated compartment to minimise noise. The indoor unit is also insulated for noise attenuation.

**Performance.** A dynamically balanced forward curved fan with a multi-speed motor enables fine tuning of the indoor unit to match the supply air requirements. The system includes a temperature sensing head pressure control which enables the system to compensate for outdoor ambient temperatures below 20°C on cooling cycle, and above 15°C on heating cycle.

**Durable.** The outdoor coil fins are epoxy coated for extra protection in corrosive environments, e.g. salt laden sea air. The outdoor unit's cabinet is constructed from high grade galvanised steel - polyester powder coated for all weather protection (IP 45). External fasteners are stainless steel. Heat exchange coils comprise aluminium plate fins on mechanically expanded rifled copper tube. The indoor unit's cabinet is constructed from high grade galvanised steel and also includes a plastic drain tray for complete corrosion resistance.

**Service Access.** The indoor unit's built-in drain tray can be removed for ease of cleaning and service accessibility.

**Insulation.** Closed cell foam insulation has been used in the indoor unit's cabinet to ensure no particles are introduced into the air stream. The insulation is foil faced and meets fire test standards AS 1530.3 (1989) and BS 476 parts 6 & 7.

**Mounting.** The indoor unit can be mounted rigid, or using the optional spring mounting brackets which minimise transfer of vibration.

**Self Diagnostics.** The Outdoor Unit Controller (OUC) has a display of LEDs to indicate faults and running conditions. A general fault indicator is included for interface to external systems.

## OPTIONAL EQUIPMENT

Outdoor Unit:

1. LP switch.
2. Fault indicating auxiliary relay board.
3. Wall mounting brackets.
4. Quick Start Soft Starter for lowering starting current.

Indoor Unit:

1. Filter box - integrated return air spigot and washable filter (rated EU2).

2. **temperzone** HAN-L6 Controller.
3. Spring Mounting Kit.
4. 3 kW electric booster heater box - complete with safety cutouts required to meet AS/NZS 3350.2.40 1997.
5. Supply and return air plenums.
6. Safety drain tray.

## SAFETY FEATURES

1. HP and loss of refrigerant protection.
2. Anti-rapid cycle timer and internal overload for compressor protection.
3. Circuit breaker control circuits.
4. Time-and-temperature controlled electronic de-ice switch prevents icing up of the outdoor coil during heating cycle (OSA 100R only).
5. Frost protection on cooling cycle.
6. Sensor fault indication.
7. Crankcase heater prevents liquid refrigerant condensing in the compressors during the 'off' cycle.
8. Compressor minimum run time to ensure oil return.

## COMPRESSOR

Each high efficiency scroll type compressor is hermetically sealed, quiet running and supported on rubber mounts to minimise vibration.

## REFRIGERATION PIPING

The standard unit allows for a line length of up to 30 m.

Max. height separations between units are :  
Reverse Cycle systems:

Outdoor unit above indoor unit : 12 m

Outdoor unit below indoor unit : 12 m.

Cooling Only systems:

Outdoor unit above indoor unit : 18 m

Outdoor unit below indoor unit : 12 m.

For extended line lengths contact your nearest **temperzone** sales office for additional details on piping requirements. The OSA 100 is shipped from the factory with a charge of HCFC-22 (R22) refrigerant sufficient for a 10 m line length. Liquid and suction service valves are provided. The matched indoor unit is shipped with a holding charge of nitrogen. Both units have one flare and one brazed pipe connection.

## WIRING

The electrical supply required (including voltage fluctuation limits) is:  
1 phase 200-252 V a.c. 50 Hz with neutral and earth. A control panel, located in the outdoor unit, is fully wired ready to accept the main power supply.

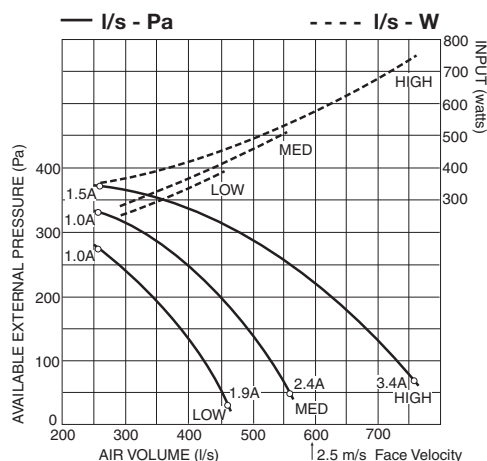
**Note:** A three phase version of this system, i.e. ISD 101Q/OSA 101 is also available.

## AIR HANDLING

**Note:** In a free blow application, beware of exceeding indoor fan motor's full load amp limit.

As filters are optional, the fan air flows given are for units installed without filters.

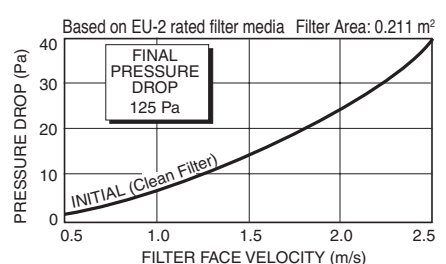
The manufacturer operates a quality management system that conforms to AS/NZS ISO 9001:2000.



## ELECTRICAL

E.E.R. (cooling)	2.5
Indoor Fan Full Load Amps	2.7 A
Running Amps (Total System)	19 A
Recommended External Fuse	32 A

## FILTER PRESSURE DROP



## PERFORMANCE DATA

## COOLING CAPACITY (kW)

Total = Total Capacity (kW)      Sens. = Sensible Capacity (kW)  
 E.A.T. = Entering Air Temperature      ○ = Nominal Capacity (kW)  
**Note:** Capacities are **gross** and do not include allowance for fan motor heat loss. Capacities are for close coupled systems. Interconnecting pipework will reduce capacity.

MODELS Indoor / Outdoor Unit	INDOOR FAN		INDOOR COIL E.A.T.		OUTDOOR COIL ENTERING AIR TEMPERATURE °C D.B.											
	SPEED	AIR l/s	W.B. °C	D.B. °C	23		27		31		35		39		43	
					Total	Sens.	Total	Sens.	Total	Sens.	Total	Sens.	Total	Sens.	Total	Sens.
ISD 101Q / OSA 100	HIGH	625	15	21	9.8	7.5	9.5	7.3	9.2	7.2	8.9	7.1	8.6	6.9	8.2	6.8
			17	23	10.4	7.4	10.1	7.3	9.8	7.2	9.5	7.1	9.2	6.9	8.9	6.8
			19	27	11.0	8.5	10.7	8.4	10.4	8.3	10.1	8.2	9.8	8.1	9.5	8.0
			21	31	11.7	9.6	11.4	9.5	11.1	9.4	10.7	9.3	10.4	9.2	10.1	9.1

### Indoor Air Flow Correction Factors @ nominal conditions

	Indoor Air Flow (%)			
	-20%	-10%	Rated	+10%
Total Capacity	0.95	0.975	1.0	1.025
Sensible Capacity	0.89	0.950	1.0	1.050

## PIPE LENGTH CAPACITY LOSS

### ON COOLING CYCLE DUE TO PRESSURE DROP

**Note:** Loss percentage is approximate only.  
 No allowance made for vertical piping.

Pipe Size (mm)		Equivalent Line Pipe Length (m)					Additional Pipe Length to allow per Bend	
Liquid	Suction	5	10	15	20	30	Suction Pipe Size OD	19 mm
10	19	0.75 %	1.5 %	2.25 %	3 %	5 %	Long 90° Radius (2 x pipe dia.)	0.4 m

## HEATING CAPACITY (kW)

G = Gross Heating Capacity kW, based on nominal air flow of 625 l/s.  
 N = Net Heating Capacity kW allowing for average defrost.  
 ○ = Nominal Capacity (kW)

### Reverse Cycle Systems

MODELS Indoor / Outdoor Unit	INDOOR ENTERING AIR TEMP. °C D.B.	OUTDOOR COIL ENTERING AIR TEMPERATURE (E.A.T.) °C D.B.															
		-5		-3		-1		1		3		5		7		9	
		G	N	G	N	G	N	G	N	G	N	G	N	G	N	G	N
ISD 101Q / OSA 100	15	7.0	6.3	7.5	6.8	8.1	7.3	8.6	7.6	9.1	7.7	9.8	8.8	10.4	10.3	10.9	10.9
	20	6.8	6.2	7.4	6.7	7.9	7.1	8.4	7.4	8.9	7.5	9.6	8.6	10.2	10.1	10.7	10.7
	25	6.6	5.9	7.1	6.4	7.6	6.9	8.1	7.1	8.6	7.3	9.2	8.3	9.8	9.7	10.3	10.3

## SOUND LEVELS

### Sound Power Levels (SWL)

**Test Conditions:** BS 848 PT2 1985. Installation Type A (free inlet and outlet). Direct method of measurement (reverberant room).  
 Measured in decibels re 1 picowatt.

### Indoor Unit - Supply Air Outlet

FAN SPEED	AIR FLOW l/s	SWL dB(A)	OCTAVE BAND FREQUENCY Hz					
			125	250	500	1 k	2 k	4 k
			SOUND POWER LEVELS (SWL) dB					
LOW	435	62	63	61	58	56	54	52
MED	530	67	66	66	63	61	59	58
HIGH	625	73	72	72	68	68	65	64

### Supply Air Outlet + Insulated Duct \*

FAN SPEED	AIR FLOW l/s	SWL dB(A)	OCTAVE BAND FREQUENCY Hz					
			125	250	500	1 k	2 k	4 k
			SOUND POWER LEVELS (SWL) dB					
HIGH	625	62	61	61	57	57	54	53

\* 1 metre of 25 mm insulated duct

### Outdoor Unit

MODEL	FAN SPEED	SWL dB(A)	OCTAVE BAND FREQ. Hz						SPL @ 3 m dB(A)	OCTAVE BAND FREQ. Hz					
			125	250	500	1 k	2 k	4 k		125	250	500	1 k	2 k	4 k
			SOUND POWER LEVELS dB							SOUND PRESSURE LEVELS dB					
OSA 100	LOW	65	71	69	63	58	51	46	49	55	53	47	42	35	30
	MED	67	72	69	66	60	54	47	51	56	53	50	44	38	31

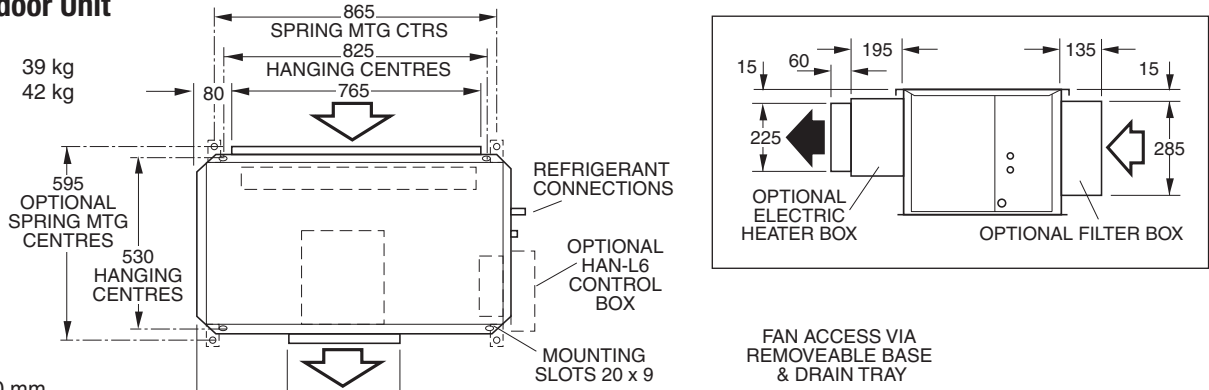
Sound Pressure Level (SPL) in decibels re 20 µPa.

## DIMENSIONS (mm)

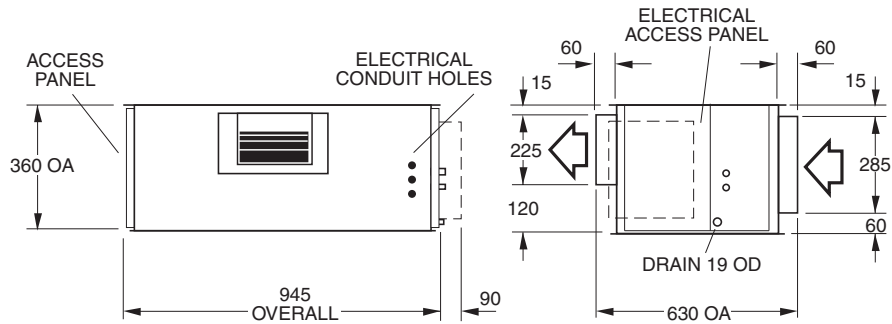
Not to Scale

### ISD 101Q Indoor Unit

Net Weight 39 kg  
Shipping Weight 42 kg



**Note :** Allow 500 mm minimum clearance to each access panel.

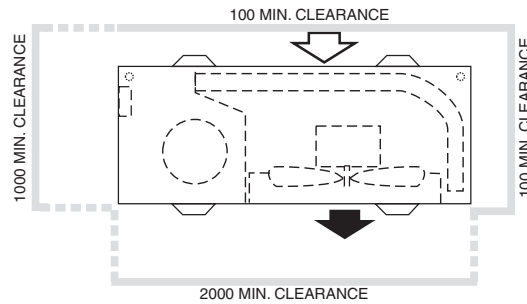


### OSA 100 Outdoor Unit

	OSA 100C	OSA 100R
Net Weight	84 kg	87 kg
Shipping Weight	94 kg	97 kg

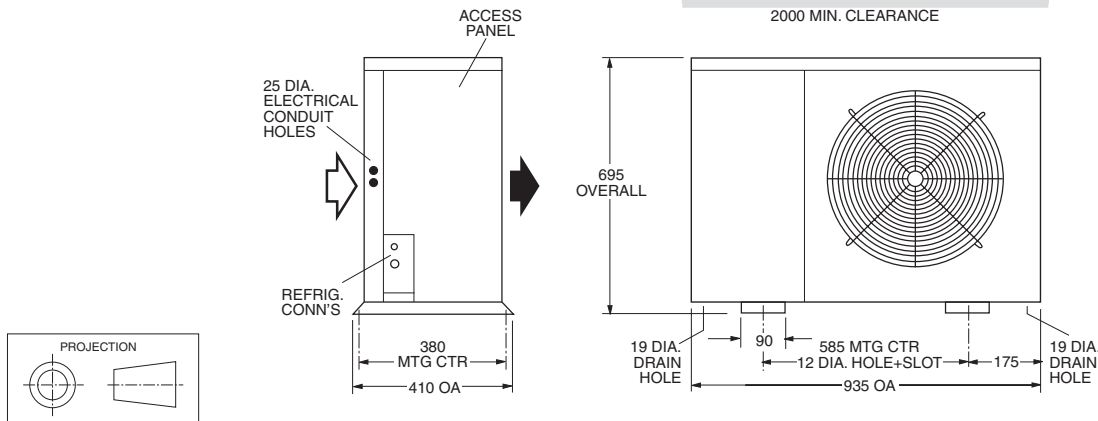
**Note**

Materials and specifications are subject to change without notice due to the manufacturer's ongoing research and development



**Recommended Pipe Sizes**

Suction: 19 mm OD  
Liquid: 10 mm OD



**temperzone limited**

Head Office, Auckland : 38 Tidal Rd, Mangere, N.Z.  
Private Bag 93303, Otahuhu, NEW ZEALAND.  
Email sales@temperzone.co.nz Website: www.temperzone.biz

**temperzone australia Pty Ltd**

Head Office, Sydney : 7A Bessemer St  
PO Box 6448, Delivery Centre, Blacktown, NSW 2148,  
AUSTRALIA. Email sales@temperzone.com.au

AUCKLAND	SYDNEY	MELBOURNE
Ph. 0-9-279 5250	Ph. (02) 8822-5700	Ph. (03) 9551-7422
Fax 0-9-275 5637	Fax (02) 8822-5711	Fax (03) 9551-8550

WELLINGTON	ADELAIDE	BRISBANE
Ph. 0-4-569 3262	Ph. (08) 8333-1833	Ph. (07) 3399-2544
Fax 0-4-566 6249	Fax (08) 8333-1844	Fax (07) 3399-2577

CHRISTCHURCH	SINGAPORE	NEWCASTLE
Ph. 0-3-379 3216	Ph. SNG 6733 4292	Ph. (02) 4962-1155
Fax 0-3-379 5956	Fax SNG 6235 7180	Fax (02) 4961-5101



Available from

PERTH
Ph. (08) 9314-3844
Fax (08) 9314-3855

TOWNSVILLE
Ph. (07) 4773-9566
Fax (07) 4773-9166

HOBART
Ph. (03) 6272-0066
Fax (03) 6272-0506