

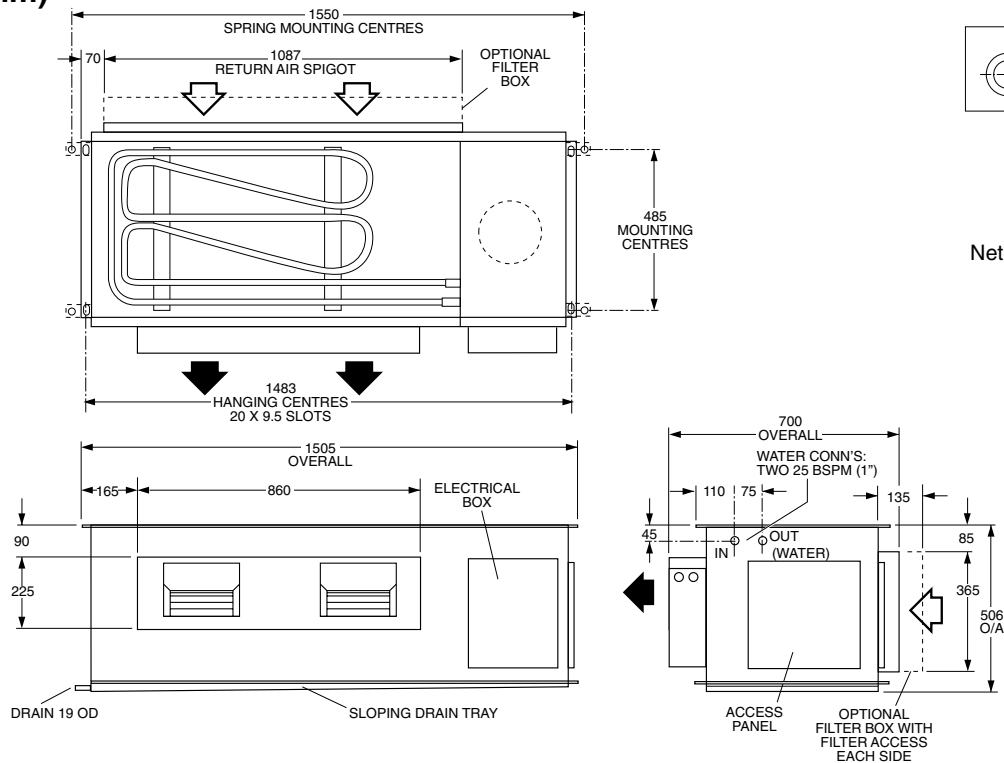
HWP 170

DATA SHEET

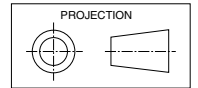
Ducted Water Cooled R410A Packaged Air Conditioners

Dimensions (mm)

Not to Scale



HWP 170



Net Weight 160 kg

COOLING CAPACITY (kW)

AIR FLOW RATE l/s	COIL E.A.T.		LEAVING WATER TEMPERATURE (L.W.T.) °C																							
	W.B. °C	D.B. °C	25				30				35				40				45				50			
			T	S	FL	HR	T	S	FL	HR	T	S	FL	HR	T	S	FL	HR	T	S	FL	HR				
1015	17	23	17.8	13.7	1.0	20.6	17.0	12.8	1.0	20.0	16.2	12.2	1.0	19.6	15.5	11.8	1.0	19.0	15.2	11.3	1.0	19.0	15.0	10.3	1.0	18.9
	19	27	19.0	13.8	1.0	21.8	18.8	13.5	1.0	21.9	17.2	13.5	1.0	20.6	16.8	12.8	1.0	20.5	15.5	12.6	1.0	19.1	15.2	12.4	1.0	19.1
	21	31	20.3	16.0	1.0	22.7	20.1	15.9	1.0	23.1	20.0	15.8	1.0	23.5	18.2	15.6	1.0	21.9	17.5	15.4	1.0	21.3	16.5	15.3	1.0	20.4

T = Total Capacity (kW)
FL = Water Flow (l/s)

S = Sensible Capacity (kW)
E.A.T. = Entering Air Temperature (°C)

HR = Heat Rejection (kW)
○ = Nominal Capacity (kW)

NOTE: Capacities are **gross** and do not include allowance for fan motor heat loss. For fan motor heat loss refer to Air Handling Performance. Water flow and cooling capacity based on 5 °C water temp. difference.

HEATING CAPACITY (kW)

HW*_R Reverse Cycle version

MODEL	WATER FLOW RATE l/s	COIL E.A.T. D.B. °C	LEAVING WATER TEMPERATURE (L.W.T.) °C											
			12.5				15.5				18.5			
			HC	HAb	EWT	INPT	HC	HAb	EWT	INPT	HC	HAb	EWT	INPT
HWP 170R	1.0	18	15.4	11.4	16.0	3.3	16.4	12.3	19.3	3.5	17.6	13.4	22.6	3.6
		21	15.2	11.1	16.0	3.5	16.3	12.0	19.2	3.7	17.5	13.0	22.5	3.9
		25	15.2	10.7	16.0	3.8	16.3	11.7	19.2	4.0	17.4	12.7	22.5	4.2

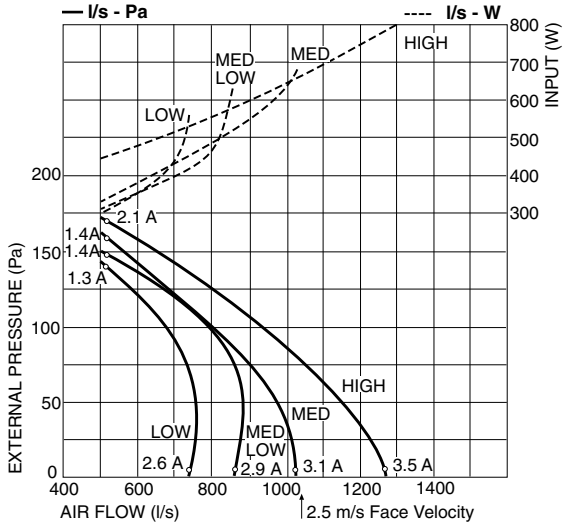
HC = Heating Capacity (kW)
HAb = Heat Absorbed (kW)

EWT = Entering Water Temperature (°C) (Minimum required 17°C)
INPT = Compressor Input (kW)

○ = Nominal Capacity (kW)

E.A.T. = Entering Air Temperature (°C)

AIR HANDLING PERFORMANCE Without Filter



FILTER (clean)	Coil Face Velocity (m/s)		
	1.5	2.0	2.5
	Pressure Loss (Pa)		
	5	9	13

QUICK REFERENCE HWP 170

Electrical Input (Cooling)	4.5 kW
E.E.R. (Cooling)	3.66
Running Amps/ph. (Total)	9.7 / 8 / 8
Fan Motor Full Load Amps	2.7
Electrical Supply Required	3 ph. 380-415V ±10% a.c. 50 Hz
Recom'd External Fuse Size	25 A
Refrigerant	HFC-410A (R410A)
Minimum Water Flow	1.0 l/s
Water Coil Pressure Drop	41.2 kPa (6 psi)
Filter (polypropylene net)	optional
Electric Heat Option	9 kW

Note

1. In tropical (high humidity) conditions care must be taken to select an air flow which gives a suitable coil face air velocity, to prevent water carry over.
2. For applications with low resistance be sure not to exceed the fan motor full load amps.
3. Applications using full or high proportions of fresh air should be referred to **temperzone** engineering office to establish the correct selection of units.

SOUND LEVELS

Note: SPL measured to JIS 8616 (1m from source in an anechoic chamber)

SUPPLY AIR + INSULATED DUCT

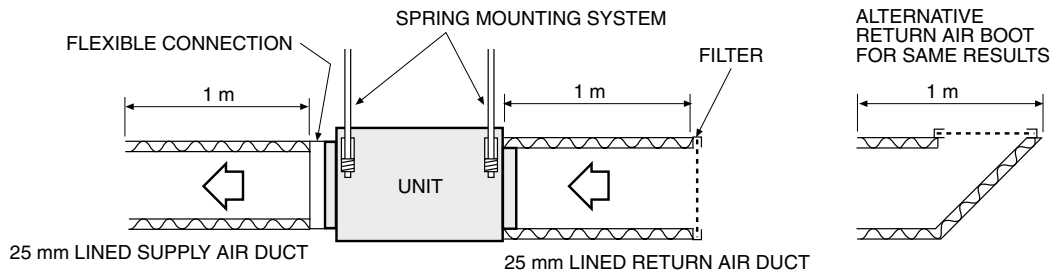
MODEL	FAN SPEED	AIR FLOW l/s	SOUND PRESSURE LEVELS (SPL) dB(A)	SOUND POWER LEVELS (SWL) dB						
				SWL dB(A)	OCTAVE BAND FREQ. Hz					
					125	250	500	1 k	2 k	4 k
HWP 170	LOW	750	49	57	60	57	57	51	43	36
	MED/LOW	880	51	58	61	59	58	52	45	37
	MED	950	54	62	65	63	61	56	48	42
	HIGH	1000	58	65	69	66	64	60	52	47

SUPPLY AIR OUTLET

MODEL	FAN SPEED	AIR FLOW l/s	SOUND PRESSURE LEVELS (SPL) dB(A)	SOUND POWER LEVELS (SWL) dB						
				SWL dB(A)	OCTAVE BAND FREQ. Hz					
					125	250	500	1 k	2 k	4 k
HWP 170	LOW	750	55	64	62	59	61	59	56	52
	MED/LOW	880	58	66	65	62	63	61	59	55
	MED	950	61	69	67	65	66	64	62	58
	HIGH	1000	64	73	69	68	69	68	66	63

CASE BREAKOUT + RETURN AIR

MODEL	FAN SPEED	AIR FLOW l/s	SOUND PRESSURE LEVELS (SPL) dB(A)	SOUND POWER LEVELS (SWL) dB						
				SWL dB(A)	OCTAVE BAND FREQ. Hz					
					125	250	500	1 k	2 k	4 k
HWP 170	LOW	750	58	66	66	61	63	62	58	52
	MED/LOW	880	59	67	68	62	64	64	59	53
	MED	950	60	68	68	64	66	64	61	55
	HIGH	1000	62	70	70	68	67	66	62	57



Sound Pressure Levels (SPL) Within A Room

Deduct the room absorption effect below from the Sound Power Levels (SWL) above to obtain Sound Pressure Levels within a room. Note: Occupant at least 1.5 m from sound source.

ROOM TYPE	OCTAVE BAND FREQ. Hz					
	125	250	500	1k	2k	4k
	ROOM ABSORPTION EFFECT					
SOFT	4	8	11	11	11	11
MEDIUM	3	7	8	9	9	9
HARD	0	1	3	4	4	5

NOTE

The manufacturer reserves the right to change specifications at any time without notice or obligation. Certified data available on request.