

SPECIFICATIONS



Indoor Unit	(525-501-001 / 525-511-001)	ISD 380KB(H/V)-P
Outdoor Unit	(526-501-701)	OSA 380RKTBQV (fixed)
Cooling capacity (net) to AS/NZS 3823 T1		35.9 kW
Heating capacity H1		38.5 kW
Electrical input - cooling		11.2 kW
Electrical input - heating		11.2 kW
EER / AEER (cooling)		3.20 / 3.15
COP / ACOP (heating)		3.43 / 3.41
Unit Controllers		UC6
Refrigerant		R410A
Refrigerant precharge for 10 m		6.55 kg/sys.
Additional charge req'd for over 10 m		100 g/m
Base refrigerant charge OSA		5.55 kg/sys.
Maximum line length		60 m
Separation limit: OSA above ISD		20 m
Separation limit: OSA below ISD		20 m
Suction line		22 mm OD (x2)
Liquid line		13 mm OD (x2)
Compressor oil type		POE 32-3MAF (or equivalent)
Additional oil charge over 40m line length		20 ml/m
Compressor type		fixed scroll (x2)
Power supply via OSA		3ph. 400V±6% ac 50Hz + N + E
Compressor (3ph.) run amps *		8 A (x2)
Compressor overload setting		11.5 A (x2)
Indoor fan motor size		EC plug 350 dia. 1.3kW (x2)
Nominal airflow at rating conditions *		2100 l/s
Indoor fan motor (3ph.) - full load		2.1 A/ph. (x2)
Outdoor fan motor (1ph.) - full load		1.7 A (x4)
Outdoor fan motor type		EC axial
Outdoor fan max. static pressure @4,520 l/s		60 Pa **
Control circuit breaker (internal)		2 A
Auxillary power outlet (1ph.)overload setting		10 A
Running amps (total system)*		17 / 22 / 17 A
Max. running amps (total system)		27 A
RCD type recommended		type A, 30mA, 3 pole
Net weight ISD		169 kg
Net weight OSA		458 kg

Accessories:

Spring Mounting Kit	307-341-101
Filter Box c/w EU2/G2 rated filter (NZ Only)	525-501-605
ISD Replacement filter	119-000-032 (x3)
UC6 Service Interface tool	201-000-379

Optional Controls:

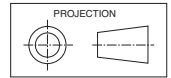
SAT-3 Room temperature controller	201-000-146
TZT-100 Room temperature controller	201-000-350

Refer to temperzone for other options, eg remote sensors, connection wires.

* Tested in accordance with AS/NZS 3823

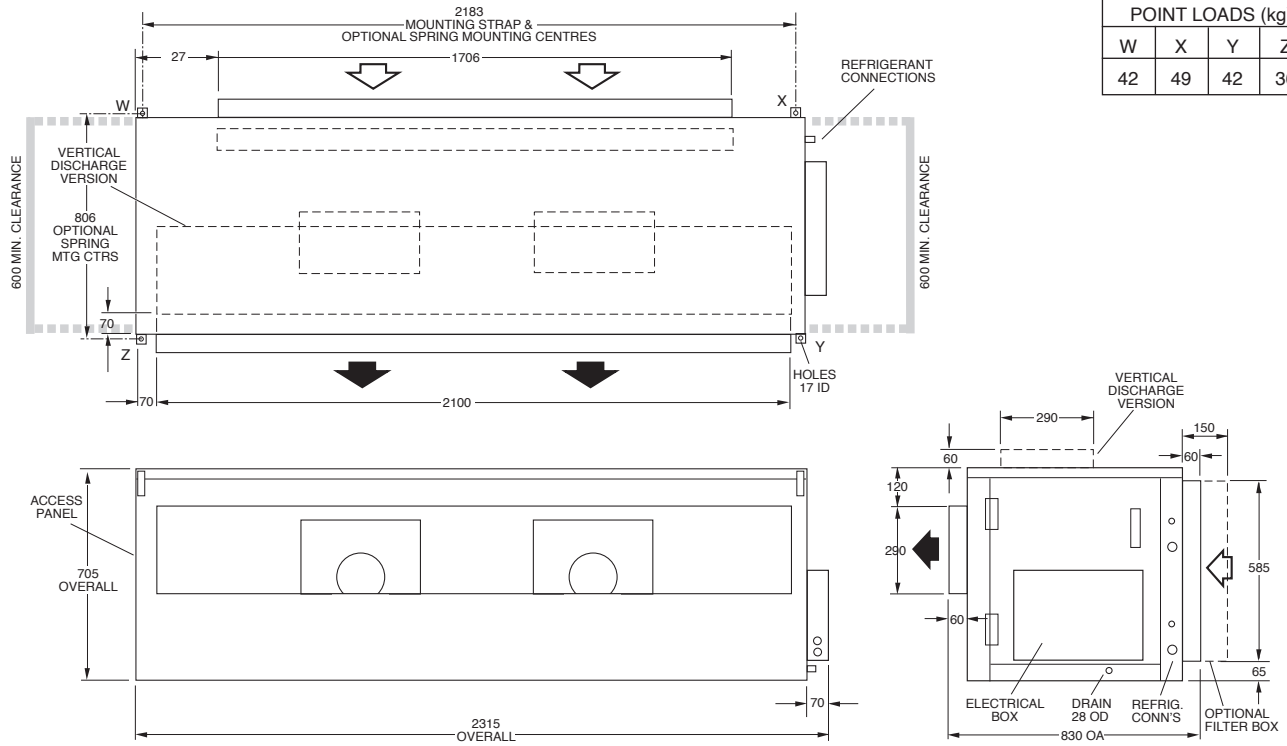
** Contact Temperzone for assistance for higher static applications

DIMENSIONS (mm)

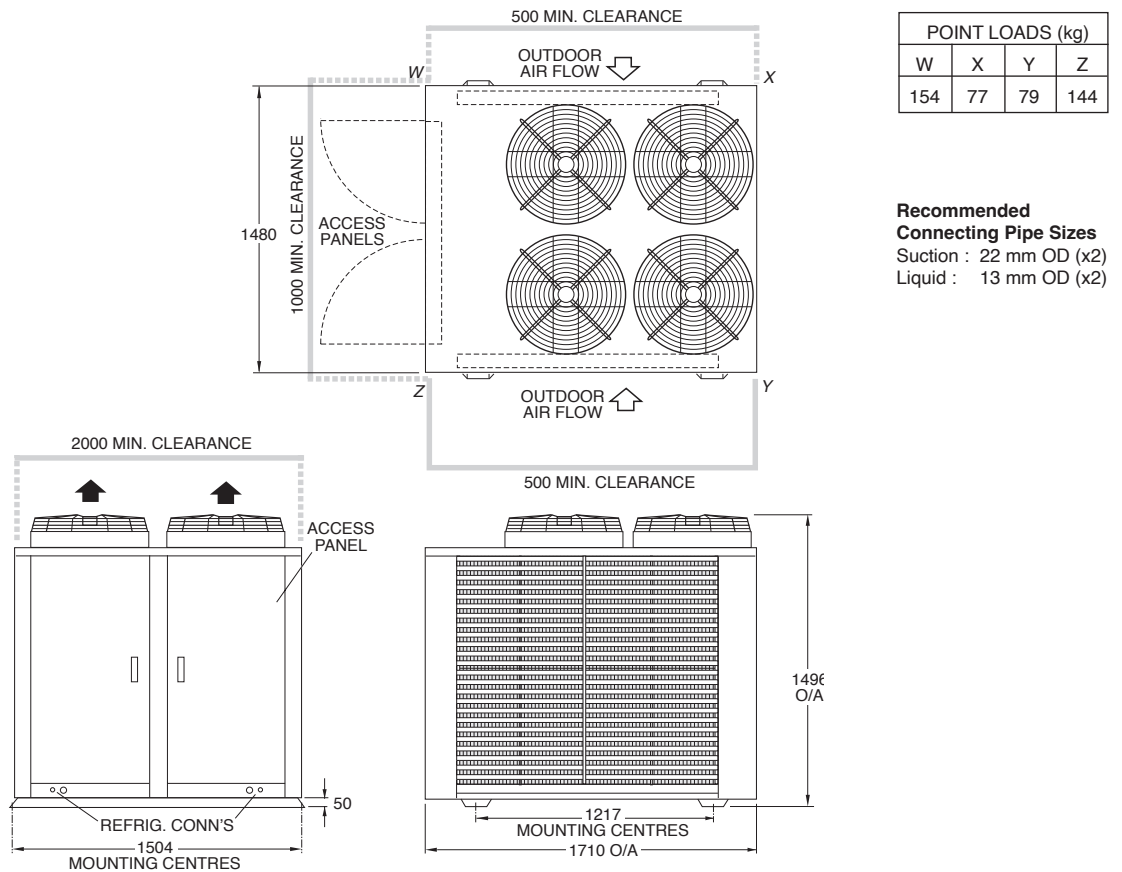


Not to Scale

ISD 380KB(H/V)-P Indoor Unit



OSA 380RKTQBQV Outdoor Unit



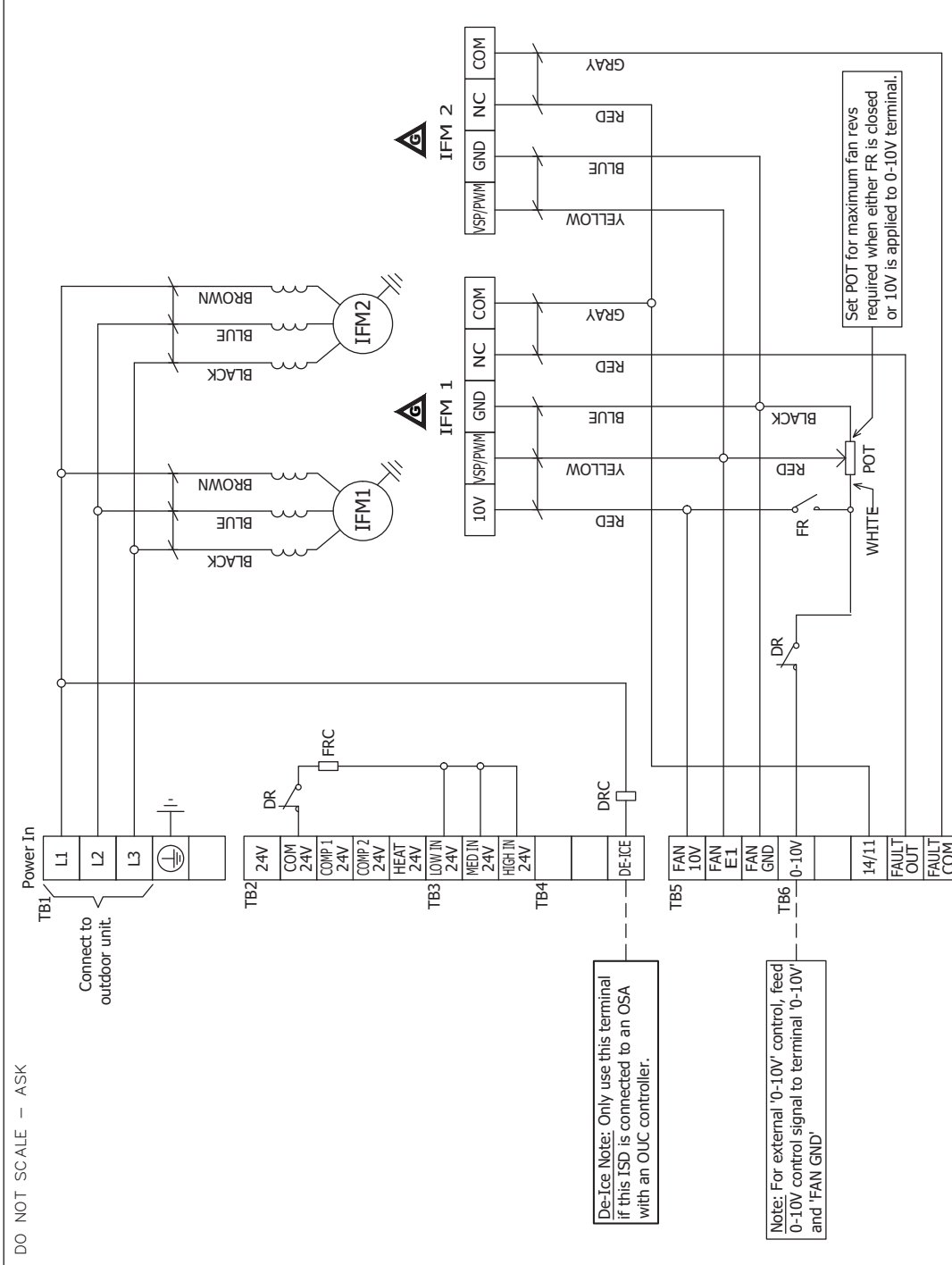
NOTE

Specifications are subject to change without notice due to the manufacturer's ongoing research and development programme.

INDOOR UNIT WIRING

Indoor-Outdoor Connection Wiring: refer 'Installation & Maintenance' pamphlet, page 6.

Model	ISD	310-P	380-P
Voltage In	V	400/415	400/415
IFM Full load AMPS	A	2.1 x 2	2.1 x 2
DR	De-Ice Relay		
DRC	De-Ice Relay Coil		
FR	Fan Relay		
FRC	Fan Relay Coil		
IFM	Indoor Fan Motor		
POT	Potentiometer (max speed)		



DO NOT SCALE - ASK

De-Ice Note: Only use this terminal if this ISD is connected to an OSA with an OUC controller.

Note: For external '0-10V' control, feed 0-10V control signal to terminal '0-10V' and 'FAN GND'

ISSUE	MODIFICATION	ECN	DATE	APRVD	C.M.W.
G	Update fan terminal connections for Sammu	N5069	18-01-23	A.G.V.	
F	"Fan Earth Symbol" Changed to "Fan E1"	N4056	24-01-18	M.A.K.	
E	Update earth symbols; 24V was HOT 24V; Designate TBs 1-6	N3994	03-10-17	L.O.L.	
D	IFM 2 10V Wire Removed	N3359	30-08-13	C.M.W.	
C	IFM Full load Amps corrected on 380-P	N3147	05-02-13	R.A.S	
B	Remove Outdoor unit wiring layout. Change De-Ice note. Web site and client wiring info updated.	N2967	29-03-12	C.M.W.	

DRG SIZE	No.	DESCRIPTION	Mat'l	FINISH No.

Client Wiring ---

Title: ISD 310 & 380KB-P WIRING SCHEMATIC

Drawn CMM	Date	27-01-11	Drawing No.	525-504-002	Revision	G
Aprvd						

