

HITACHI

# Wall Mounted Split Systems

FrostWash Technology 

Cooling & Heating







**10**

**reasons  
to choose  
Hitachi**



## Worldwide trusted brand

Hitachi developed its first window mounted air conditioner in 1952 and since then has been helping to make life more harmonious for people around the world. Today, our long heritage of precision Japanese engineering ensures that no detail is overlooked in our quest to create perfect environments.



## Piece of mind warranty

Our wall mounted split systems are designed to withstand harsh Australian weather conditions. You can enjoy the peace of mind with a six year warranty on all 'S' and 'P' series models.



## FrostWash Technology

When no motion is detected, the FrostWash\* feature cools the heat exchanger down to -15°C to form a thin layer of frost from the moisture in the air. The thin layer of frost lifts dust particles, mould and bacteria off the heat exchanger achieving a 91% reduction of bacteria and 87% reduction of mould in the unit.



## DC Inverter Technology

When the desired temperature has been reached, the DC Inverter lowers the speed of the motor to save on energy usage and efficiently maintains the desired temperature. This leads to significant reductions in annual running costs.



## 4 Way directional air

The louvres not only move up and down automatically, but also left and right. This action disperses air over a much wider range to warm or cool the room efficiently and evenly. With the push of a button louvres can be set in any airflow direction to precisely control your comfort.



## airCloud home, Wifi Control for your Hitachi air conditioner

Forgot to turn off your AC? No problem. airCloud Home allows you to control your air conditioner on the go! Connect airCloud Home to your smart speaker to enjoy hands-free operation of your Hitachi air conditioner with voice command. airCloud Home is compatible with Google Assistant and Amazon Alexa, enabling you to change the temperature while you're working, exercising or cooking.

### SmartFence

Connect your air conditioner to your location and automatically stop and start your AC as you leave and return home. airCloud home is an optional extra for 'E' and 'S' models and standard 'built in' on the 'P' series.



## Eco Mode

Programmed to run your system at a slightly reduced rate, Eco Mode helps keep your power consumption to a minimum enabling you to achieve significant energy savings.



## Auto Restart

The auto restart function can be enabled to ensure your air conditioner returns to the same operation in the event of a power failure.



## Powerful mode

Powerful mode will run your system at maximum cooling or heating as well as maximum fan speed projecting airflow further and faster to cool or heat a room rapidly.



## Mode Selection

With 5 modes (Auto, Cool, Heat, Dry & Dehumidify) you can choose the mode that best suits your lifestyle.

\*Feature introduction based on RAS/RAC-S35YHAB. Tested by Kitasato Research Centre of Environmental Science. Test No. 2019\_0154. of mould in your unit.

# The Complete HOME Solution 3 models to choose from

## 'P' Series



- Scene camera
- Auto FrostWash
- Motion Sensor
- Auto Filter Clean Robot
- 3D Airflow
- Weekly Timer
- Camera Eco Mode
- Fuzzy Logic Control
- Built in Wi-Fi

## 'S' Series



- Auto FrostWash
- Motion Sensor
- Weekly Timer
- Nano Titanium pre filter
- Eco sleep mode
- Optional Wi-Fi

## 'E' Series



- Manual FrostWash
- 12hr Timer
- Optional Wi-Fi

# 'P' SERIES

## KEY FEATURES



SCENE CAMERA



PRESENCE SENSOR



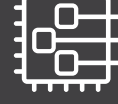
AUTO FILTER  
CLEAN ROBOT



SCENE CAMERA  
ECO MODE



POWERFUL MODE



FUZZY LOGIC



WEEKLY TIME  
CLOCK



AIR SLEEP



3D AIRFLOW



VOICE CONTROL



LEAVE HOME  
FUNCTION



BUILT IN WI-FI



4 WAY  
AIRFLOW



QUIET MODE



POWER TRACKING



WARRANTY



FROSTWASH



Premium Wireless  
Controller

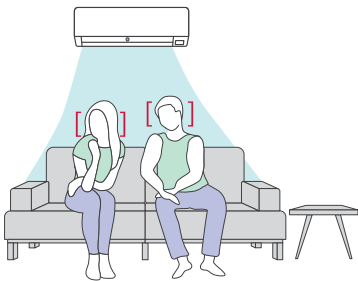




# Scene Camera Technology

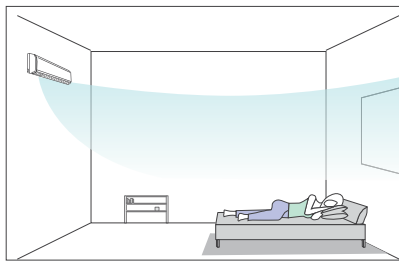
Intelligent Scene Camera Technology identifies up to five people, their location in the room, and their activity level or absence to adjust the temperature, airflow, or setting to provide comfort to those who need it most. If the room is unoccupied, the unit will automatically enter energy-saving operations, helping you save on energy costs.

## How Scene Camera Technology works



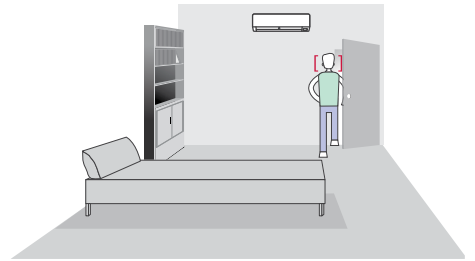
### Image sensing

Intelligent Image Sensor detects the number of people, location and activity in the room and adjusts the temperature accordingly to ensure precise cooling/heating and energy saving operations.



### Smart swing

The Smart swing function adjusts direct or indirect airflow as desired to offer best comfort conditions.

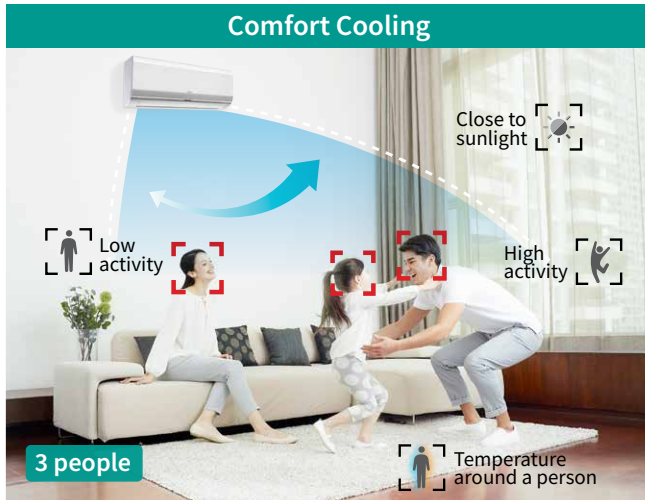


### Auto off

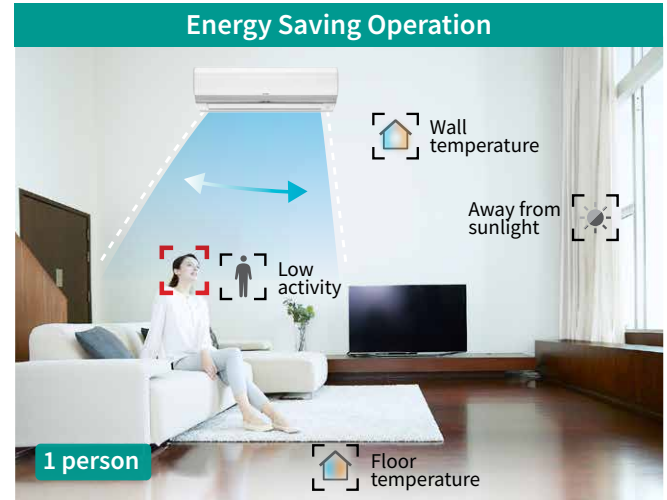
When the Image Sensor detect human absence in the room for a specified time, the AC automatically switches off. This reduces wastage of cooling and energy.

## ECO OPERATION with Scene Camera

The image Camera monitors the room as well as human conditions and selects a suitable operation to balance comfort and energy savings. Programmed to run your system at a slightly reduced rate, Eco Mode helps keep your power consumption to a minimum enabling you to achieve significant energy savings.



Comfortable cooling with a wide swing to cover everyone in the room. Cool air is sent longer to the people in sunny areas and/or with higher activity level.



Automatically switches to soft and limited airflow when only one person remains in the room, away from the sunny area.

## Auto Save and Auto Off/On

- Automatically turns to Soft Cooling after detecting 10 minutes of human absence
- After 20 minutes of detecting human absence, Soft Cooling increases the temperature by 1°C
- After 1 hour of human absence, the operation comes to a complete stop
- Operation is resumed automatically when a person enters the room



Automatically switches to Soft Cooling after 10 minutes of absence to save energy.

When Auto Off is set, the air conditioner automatically switches off after 1 hour of absence.

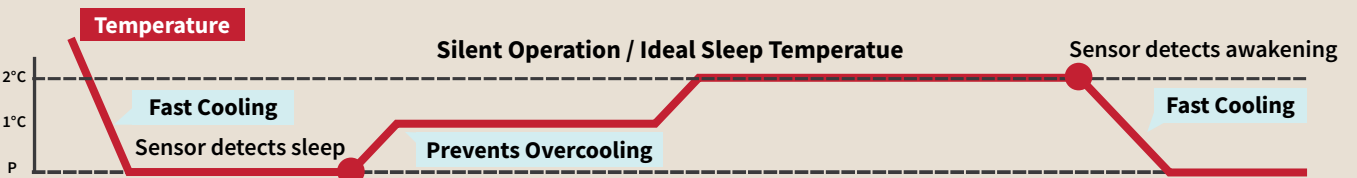
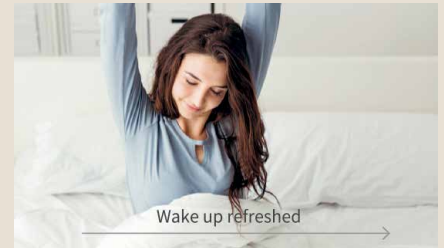
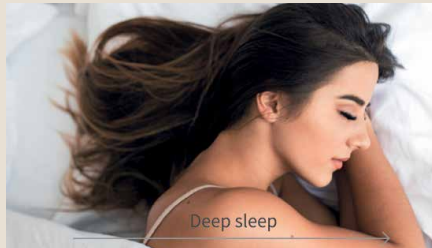
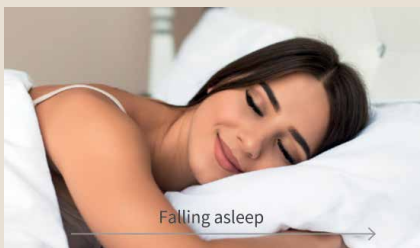
When Auto On is set, the air conditioner automatically switches on when people are detected.

 **AirSleep Technology**

A sound sleep at night after a long day at work is what every person deserves. Activity Sensor Technology helps you get that much needed rest. Infrared Sensor Technology provides a comfortable sleeping environment by regulating the room temperature according to person's active body movements so that you wake up fresh next morning. In case of no active movement, the unit increases the temperature by 1°C per hour for 2 hours.



How iSense helps?



**Falling asleep**

Eases you to sleep by increasing the set temperature for extra cooling comfort.

**Deep sleep**

Gradually increases the set temperature to maintain a comfortable room temperature.

**Waking up**

Activity Sensor Technology decreases the temperature to the initial set temperature to ensure that you wake up fresh without dry skin or dry throat.

# Clean Fresh air



## Auto Filter Cleaning Technology

How does it work?

The Auto Cleaning Brush moves across the stainless-steel coated filter to collect dust and empty it in the Dust Collector Box. This action is performed twice to ensure that no dust is left on the filter, which helps your air conditioner run efficiently and provide your home and family with clean and fresh air always.



### Ever Clean

Prevents dust accumulation and keeps the filter clean like new. It even checks the breeding of mould and bacteria that causes unpleasant odours, and keeps you feeling fresh and comfortable all day long.

### Dust on filter after a few days



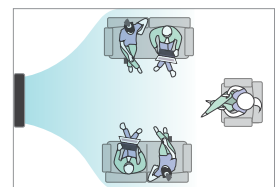
Without Auto Filter Cleaning



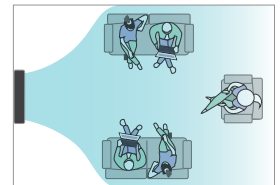
With Auto Filter Cleaning

### Ever powerful

Since it maintains the performance like that of a new air conditioner, the airflow remains the same even after a long duration of use. So that you can enjoy fresh air that reaches every corner of the room.



Reduced Cooling without iClean\*



Consistent Cooling with iClean\*



# FrostWash Technology



With FrostWash, a revolutionary new cleaning technology, you can depend on cleaner, fresher air all year round.

## Freeze

The system cools the heat exchanger down to  $-15^{\circ}\text{C}$  forming a thin layer of frost from the moisture within the air. While the frost is being formed, it lifts dust particles, mould and bacteria off the heat exchanger and traps it.

1

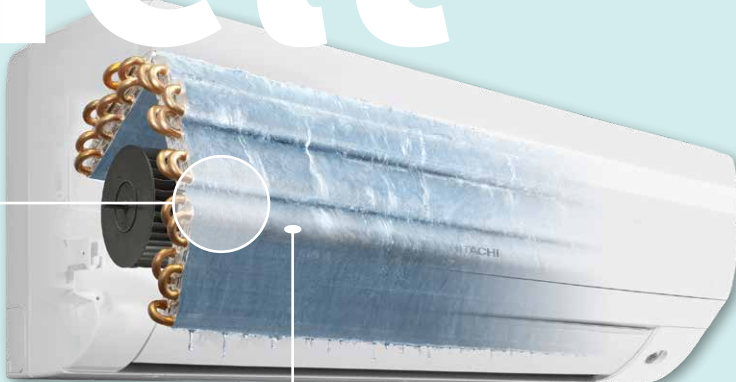


## & Melt

Once an adequate layer of frost has been formed, the system then melts the ice, flushing away the trapped dust particles, mould and bacteria hygienically through the drain pan.

The unit then thoroughly dries the surfaces inside the unit before resuming normal operation.

2



3

A clean heat exchanger not only keeps your unit operating at optimal efficiency, but also keeps the air in your home fresher and cleaner.

FrostWash achieves a **91% reduction\*** of bacteria and **87% reduction\*** of mould in your unit.

\*Feature introduction based on RAS/RAC-S35YHAB.

Tested by Kitasato Research Centre of Environmental Science. Test No. 2019\_0154. Reduction effects of bacteria and mould were observed by operating FrostWash once.

# 'S' SERIES

## KEY FEATURES



PRESENCE SENSOR



POWERFUL MODE



WEEKLY TIME  
CLOCK



LEAVE HOME  
FUNCTION



4 WAY AIRFLOW



AUTO START



QUIET MODE



WASABI FILTER



AIR PURIFYING  
FILTER



WARRANTY



POWER TRACKING



ECO SLEEP  
MODE



ULTRA LOW  
STANDBY  
POWER MODE



FROSTWASH



Premium Wireless  
Controller



Nano Titanium Pre-Filter

### NANO TITANIUM PRE-FILTER

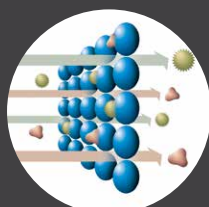
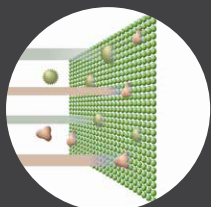
For those needing only the purest air quality, Hitachi's 'S' series features an additional Nano Titanium Pre-Filter as well as the unique Nano Titanium Wasabi Air Purifying Filter.

### Nano Titanium Wasabi Air Purifying Filter

#### Anti-bacterial agents:

Nano Titanium

Conventional



● Bacteria    ● Odours

### LEAVE HOME FUNCTION

Allows you to preset your air conditioner to start automatically if the internal temperature drops below a preset temperature (adjustable between 10-16C) while your not at home.

Ideal for use in locations that experience very cold conditions, this function can be instrumental in preventing the formation of dampness and mould.

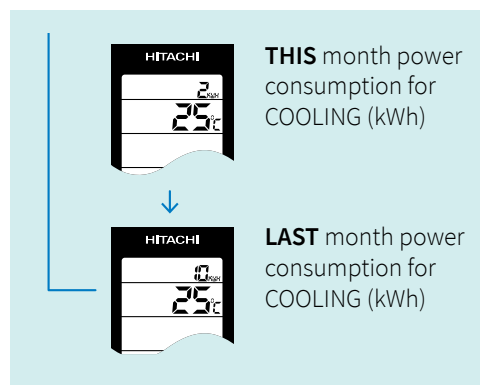
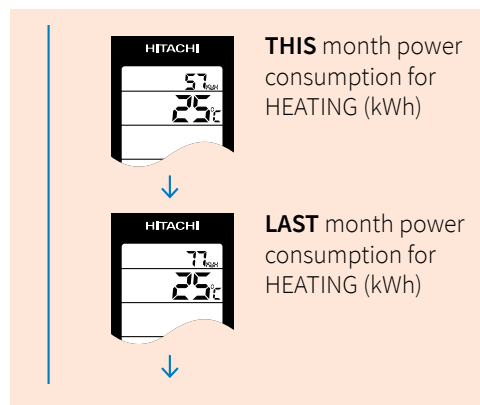
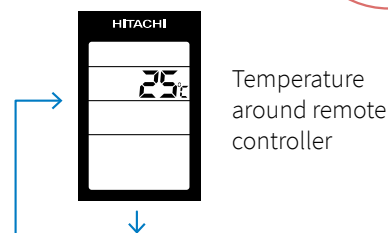
### TRACKING POWER CONSUMPTION

The wireless controller enables you to monitor your air conditioner's power usage\*, ensuring that there are no surprises when the electricity bill arrives.

\*Approximate power consumption values are displayed and should not be considered as actual values.

### Power tracking indication

Press the info button





# airCloud Home

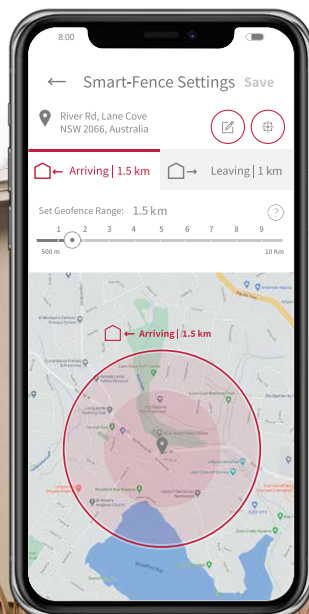
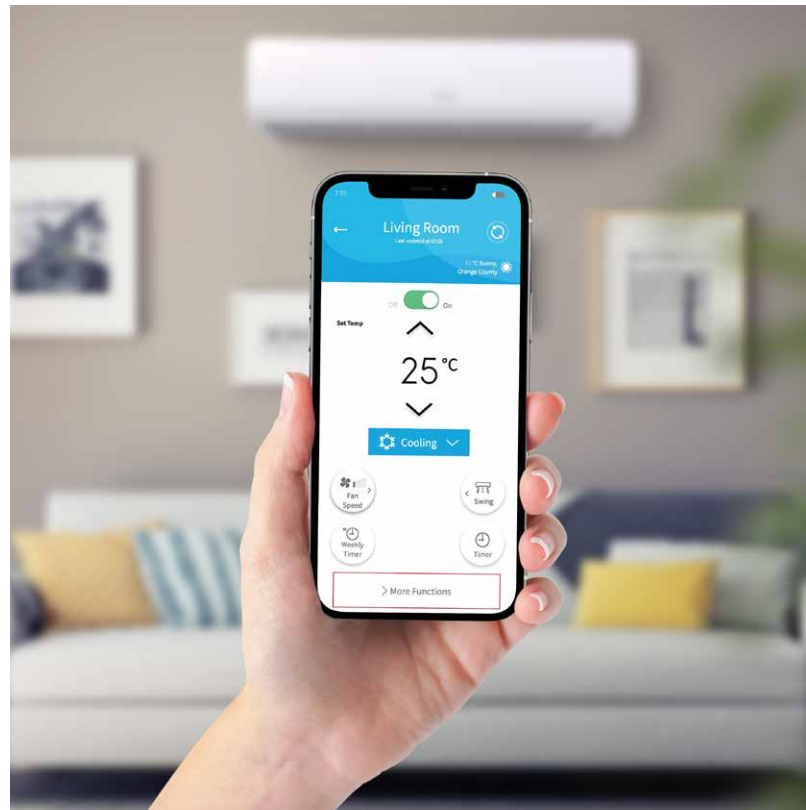
A standard inclusion in the 'P' Series and an optional accessory for the 'S' and 'E' Series.

## A SMARTER WAY TO CONTROL YOUR AIR CONDITIONER ANYTIME, ANYWHERE

Making sure your home is at the perfect temperature for when you arrive has never been easier. Hitachi airCloud\* Home allows you to remotely monitor and control your system from a single app through your smartphone for convenient temperature management in the home.

### AIRCLOUD FEATURES

- On/Off Operation
- ALL Units OFF
- Operation Mode Selectable
- Temperature Adjustment
- Smart Speaker (Google Assistant & Amazon Alexa)
- Smart Fence
- Weekly Scheduling
- On/Off Timer
- Adjustable Louvre
- Fan Speed
- Free firmware updates to latest features
- Unlimited units can be controlled through one app
- Account Management
  - Access for up to 20 users
  - Set up user permissions
- Customer Support
- Personalisation - Indoor unit naming
- Smart Notifications



### SMART FENCE

Connect your air conditioner to your location and automatically stop and start your air conditioner as you leave and return home. With the new Smart-Fence Feature, airCloud Home provides comfort, energy savings and peace of mind. Users can set the Smart-Fence as per their preferences, including their home's fence perimeter distance and comfort temperature.



#### AS YOU ARRIVE HOME

Your air conditioner will turn on automatically, helping to create a comfortable welcoming indoor climate.



#### AS YOU LEAVE HOME

Your air conditioner will stop automatically or switch to a more economic temperature for optimal efficiency.



## Command with your voice

Connect with your smart speaker. airCloud Home is compatible with Amazon Alexa and Google Assistant, enabling you to change the temperature hands-free while you cook, clean, or exercise.



Download today



[www.aircloudhome.com](http://www.aircloudhome.com)

# Optional Accessories

## REMOTE ON/OFF ADAPTOR

Switches the unit on or off via a remote device such as a hotel room card key. Save energy by switching the unit off when the room is unoccupied.

## RUN AND ALARM SIGNAL

Signal indicates when a unit is running, or if the unit has stopped due to an internal fault. This is beneficial for projects where multiple units have been installed.

## DEMAND RESPONSE MODULE (DRED)

Optional DRM module for instances where local requirements specify DRED compatibility.

## SPX-WKT3

### WIRED CONTROLLER

In addition to essential functions, you will have access to:

- Weekly programming: allows you to configure up to 5 different temperature ranges per day
- Ventilation speed
- The "holiday" function: deactivates the time clock to avoid operation when not required
- Your monthly consumption is saved and displayed
- Temperature limiting function
- Operation mode lock
- Error history
- Key lock function: locks all buttons on the remote controller, ideal for homes and offices.



# Features and options comparison table

	P SERIES	S SERIES	E SERIES
Efficiency - S & E Series Comparison	Ultra High	High	Standard
Warranty	6 Years	6 Years*	5 Years
Scene Camera	●	-	-
Smart Swing by Scene Camera	●	-	-
Air Sleep	●	-	-
Auto Filter Clean Robot	●	-	-
Fuzzy Logic Control	●	-	-
3D Airflow	●	-	-
Wavy Blade Tangential Fan	●	-	-
Wifi connectivity	●	■	■
Automatic FrostWash	●	●	-
Built-in motion sensor	●	●	-
Motion detect eco mode	●	●	-
Nano Titanium pre filter	●	●	-
Eco sleep mode	●	●	-
24/7 time clock function	●	●	□
Power tracking display	●	●	□
24 HR On/Off timer	●	●	□
One touch clean	●	●	□
Operation mode lock	●	●	□
Leave home function	●	●	□
Nano Titanium Wasabi filter	-	●	●
Basic eco mode function	●	●	●
Basic sleep mode	●	●	●
Manual FrostWash	●	●	●
Powerful mode	●	●	●
4 way auto swing (up-down/left-right)	●	●	●
Auto restart function	●	●	●
12hr timer control	●	●	●

● STANDARD

□ OPTIONAL WITH PREMIUM CONTROLLER

■ OPTIONAL ACCESSORY

- NOT AVAILABLE

\* Applicable to S Series YHAB models only, purchased after 1st April 2021. 5 Year Warranty for units purchased prior to April 2021.





# P Series - Tech Data

## MODEL

Indoor	RAS-P25YHAB	RAS-P35YHAB	RAS-P50YHAB
Outdoor	RAC-P25YHAB	RAC-P35YHAB	RAC-P50YHAB
<b>Capacity kW</b>			
Nominal Cooling	2.5	3.5	5.0
Nominal Heating	3.5	4.5	6.0
H2 Rating	3.3	4.3	6.0
<b>Capacity (Range) kW</b>			
Cooling	0.9 ~ 3.5	0.9 ~ 4.1	0.9 ~ 6.0
Heating	0.9 ~ 5.5	0.9 ~ 6.0	1.0 ~ 7.5
<b>Air Flow l/sec</b>			
Cooling - l / Sec (H/M/L/SL)	145/120/105/90	190/135/120/100	230/175/131/100
Heating - l / Sec (H/M/L/SL)	180/141/110/95	220/160/135/101	260/225/131/110
<b>Energy Efficiency *</b>			
TCSP Cooling (MIX)	6.52	6.57	5.17
THSP Heating (MIX)	5.22	5.25	4.47
Star Rating Cooling (Hot Zone)	5.5	5.5	3.5
Star Rating Heating (Hot Zone)	4.0	4.0	3.0
Star Rating Cooling (Mixed Zone)	5.0	5.0	3.5
Star Rating Heating (Mixed Zone)	3.5	3.5	2.5
Star Rating Cooling (Cold Zone)	5.0	5.0	3.5
Star Rating Heating (Cold Zone)	3.0	3.0	2.0
<b>Sound Levels (dB(A))</b>			
<b>Indoor Unit (Sound Pressure)</b>			
Cooling - Hi / Med / Lo / Sleep	40/33/24/22	43/36/29/24	46/38/31/28
Heating - Hi / Med / Lo / Sleep	41/33/24/20	44/36/29/22	46/38/31/26
<b>Outdoor Unit</b>			
Cooling / Heating (Sound Pressure)	47/-	48/-	50/-
Sound Power	60	61	63
<b>Dimensions (mm)</b>			
Indoor (W x H x D)	997 x 294 x 294	997 x 294 x 294	997 x 294 x 294
Outdoor (W x H x D)	792 x 600 x 299	792 x 600 x 299	800 x 736 x 350
<b>Weights (kg)</b>			
Indoor / Outdoor	13.5 / 37.5	13.5 / 37.5	13.5 / 51.7
<b>Operating Range</b>			
Outdoor Op. Temp. (Cooling)	-10°C to 46°C	-10°C to 46°C	-10°C to 46°C
Outdoor Op. Temp. (Heating)	-15°C to 24°C	-15°C to 24°C	-15°C to 24°C
Refrigerant Type	R32		
<b>Pipe Sizes (mm)</b>			
Refig pre charge length (m)	Ø6.35 / Ø9.52	Ø6.35 / Ø9.52	Ø6.35 / Ø12.7
Min / Max Pipe Length / Lift (m)	3 / 20 / 10	3 / 20 / 10	3 / 30 / 10
<b>Power</b>			
Power Supply	230 - 240 Volt / 50 Hz / 1 Phase		
Rated Power Input - Cooling (kW)	0.48	0.75	1.32
Power Input Range - Cooling (kW)	0.25 ~ 1.0	0.25 ~ 1.4	0.30 ~ 2.1
Rated Power Input - Heating (kW)	0.62	0.88	1.39
Power Input Range - Heating (kW)	0.25 ~ 1.5	0.25 ~ 2.0	0.30 ~ 2.7
Running current (C / H) (Rated Amps)	3.10 / 4.42	3.71 / 4.50	5.74 / 6.04
Max Current (Amps)	9.8	9.8	10.5
Power supply To	Outdoor Unit		
Interconnecting Wire	3 Core + E		

Rated capacity measured in accordance with AS/NZS 3823 conditions:  
Cooling: Indoor 27°C db / 19°C wb; Ambient 35°C db  
Heating: Indoor 20°C db; Ambient 7°C db / 6°C wb

Mains power source - AC 230V and 50Hz.  
Refer to Temperzone Warranty for full conditions.  
\*Star Ratings based on 2019 GEMS determination.



**2.5 - 5.0kW**

RAS/RAC-P25YHAB  
RAS/RAC-P35YHAB  
RAS/RAC-P50YHAB



**R32** Outdoor unit  
REFRIGERANT (RAC-P50YHAB)



**Premium Wireless  
Controller**



**6 YEAR  
WARRANTY\***

\* Applicable to P Series, and S Series  
YHAB models purchased after 1st  
April 2021.



# S Series - Tech Data



6 YEAR WARRANTY\*\*

## MODEL

Indoor	RAS-S25YHAB	RAS-S35YHAB	RAS-S50YHAB	RAS-S60YHAB	RAS-S70YHAB	RAS-S80YHAB
Outdoor	RAC-S25YHAB	RAC-S35YHAB	RAC-S50YHAB	RAC-S60YHAB	RAC-S70YHAB	RAC-S80YHAB
<b>Capacity kW</b>						
Nominal Cooling	2.5	3.5	5.0	6.0	7.0	8.0
Nominal Heating	3.2	3.8	6.0	7.0	8.0	9.0
<b>Capacity (Range) kW</b>						
Cooling	0.9 - 3.1	0.9 - 4.0	1.2 - 5.8	1.2 - 6.5	1.5 - 8.0	1.5 - 8.5
Heating	0.9 - 4.2	0.9 - 4.8	1.2 - 6.8	1.2 - 8.0	1.5 - 8.5	1.5 - 9.5
<b>Air Flow l/sec</b>						
High Cooling	142	189	258	258	283	283
High Heating	158	217	250	250	300	300
<b>Energy Efficiency</b>						
EER	5.10	4.22	4.31	3.80	3.54	3.27
COP	5.08	4.94	4.29	4.05	4.04	3.80
Star Rating Cooling*	5.5	3.5	4.0	3.0	2.5	2.0
Star Rating Heating*	5.5	5.0	4.0	3.5	3.5	3.0
<b>Sound Levels (dB(A))</b>						
<b>Indoor Unit (Sound Pressure)</b>						
Cooling - Hi / Med / Lo / Sleep	40 / 33 / 24 / 22	43 / 36 / 26 / 25	46 / 41 / 36 / 28	46 / 41 / 36 / 28	47 / 42 / 36 / 30	48 / 44 / 39 / 33
Heating - Hi / Med / Lo / Sleep	41 / 34 / 23 / 20	44 / 36 / 27 / 26	46 / 41 / 36 / 28	46 / 41 / 36 / 28	47 / 42 / 36 / 30	48 / 44 / 40 / 34
<b>Outdoor Unit</b>						
Cooling / Heating (Sound Pressure)	47 / 48	48 / 50	50 / 53	50 / 53	51 / 53	52 / 54
Sound Power	61	62	63	63	64	66
<b>Dimensions (mm)</b>						
Indoor (W x H x D)	780 x 280 x 230	780 x 280 x 230	1100 x 300 x 260	1100 x 300 x 260	1100 x 300 x 260	1100 x 300 x 260
Outdoor (W x H x D)	792 x 600 x 299	792 x 600 x 299	850 x 750 x 298	850 x 750 x 298	850 x 800 x 298	850 x 800 x 298
<b>Weights (kg)</b>						
Indoor / Outdoor	8.5 / 37.5	8.5 / 37.5	15 / 50	15 / 50	15 / 52	15 / 52
<b>Operating Range</b>						
Outdoor Op. Temp. (Cooling)	-10°C to 46°C	-10°C to 46°C	-10°C to 46°C	-10°C to 46°C	-10°C to 46°C	-10°C to 46°C
Outdoor Op. Temp. (Heating)	-20°C to 21°C	-20°C to 21°C	-15°C to 24°C	-15°C to 24°C	-15°C to 24°C	-15°C to 24°C
Refrigerant Type	R32					
<b>Pipe Sizes (mm)</b>						
Refig pre charge length (m)	Ø6.35 / Ø9.52	Ø6.35 / Ø9.52	Ø6.35 / Ø12.7	Ø6.35 / Ø12.7	Ø6.35 / Ø15.88	Ø6.35 / Ø15.88
Min / Max Pipe Length / Lift (m)	3 / 20 / 10	3 / 20 / 10	3 / 30 / 20	3 / 30 / 20	3 / 30 / 20	3 / 30 / 20
Condensate Drain (mm (OD))	16					
<b>Power</b>						
Power Supply	230 - 240 Volt / 50 Hz / 1 Phase					
Rated Power Input - Cooling (kW)	0.49	0.83	1.16	1.58	1.98	2.45
Power Input Range - Cooling (kW)	0.25 ~ 1.22	0.25 ~ 1.4	0.3 ~ 2.6	0.3 ~ 2.6	0.3 ~ 2.7	0.3 ~ 2.7
Rated Power Input - Heating (kW)	0.63	0.77	1.40	1.73	1.98	2.37
Power Input Range - Heating (kW)	0.25 ~ 1.2	0.25 ~ 1.6	0.3 ~ 2.65	0.3 ~ 2.65	0.5 ~ 2.8	0.5 ~ 2.8
Running current (C / H) (Amps)	1.09-5.30 / 1.09-5.22	1.09-6.09 / 1.09-6.96	2.31-8.55 / 1.67-9.66	2.31-8.55 / 1.67-9.66	2.50-9.79 / 2.19-10.72	2.50-9.79 / 2.19-10.72
Max Current (Amps)	9.8	9.8	10.5	10.5	12	12
Power supply To	Outdoor Unit					
Interconnecting Wire	3 Core + E					

\*\* Six year warranty applicable to S Series YHAB models purchased after 1st April 2021.

Rated capacity measured in accordance with AS/NZS 3823 conditions:  
Cooling: Indoor 27°C db / 19°C wb; Ambient 35°C db  
Heating: Indoor 20°C db; Ambient 7°C db / 6°C wb

Mains power source - AC 230V and 50Hz.  
Refer to Temperzone Warranty for full conditions.  
\*Star Ratings based on 2013 GEMS determination.

# E Series - Tech Data



5 YEAR  
WARRANTY

## MODEL

Indoor	RAS-E25YHAB	RAS-E35YHAB	RAS-E50YHAB	RAS-E60YHAB	RAS-E70YHAB	RAS-E80YHAB
Outdoor	RAC-E25YHAB	RAC-E35YHAB	RAC-E50YHAB	RAC-E60YHAB	RAC-E70YHAB	RAC-E80YHAB
<b>Capacity kW</b>						
Nominal Cooling	2.5	3.5	5.0	6.0	7.0	8.0
Nominal Heating	3.2	4.0	5.3	7.0	8.0	9.0
<b>Capacity (Range) kW</b>						
Cooling	1.0 - 3.2	1.0 - 4.0	1.0 - 5.5	1.2 - 6.5	1.5 - 8.0	1.5 - 8.5
Heating	1.0 - 4.5	1.0 - 5.0	1.2 - 6.5	1.2 - 8.0	1.5 - 8.5	1.5 - 9.5
<b>Air Flow l/sec</b>						
Hi / Med / Lo / Sleep	142/119/102/93	189/135/117/98	210/159/117/98	233/183/133/100	283/250/183/150	283/250/183/150
<b>Energy Efficiency</b>						
EER	4.55	3.85	3.62	3.33	3.41	3.27
COP	4.71	4.30	3.90	3.83	4.04	3.80
<b>Sound Levels (dB(A))</b>						
<b>Indoor Unit (Sound Pressure)</b>						
Hi / Med / Lo / Sleep	40 / 33 / 24 / 22	43 / 36 / 26 / 25	47 / 39 / 33 / 26	49 / 42 / 33 / 30	48 / 42 / 36 / 30	49 / 44 / 39 / 33
<b>Outdoor Unit</b>						
Cooling / Heating (Sound Pressure)	46 / 47	47 / 48	50 / 52	50 / 53	51 / 53	52 / 54
Sound Power	60	61	63	63	64	66
<b>Dimensions (mm)</b>						
Indoor (W x H x D)	780 x 280 x 230	780 x 280 x 230	780 x 280 x 230	900 x 300 x 230	1100 x 300 x 260	1100 x 300 x 260
Outdoor (W x H x D)	750 x 548 x 288	750 x 548 x 288	792 x 600 x 299	850 x 750 x 298	850 x 800 x 298	850 x 800 x 298
<b>Weights (kg)</b>						
Indoor / Outdoor	8.5 / 34	8.5 / 34	8.5 / 39.5	11.5 / 50	15 / 52	15 / 52
<b>Operating Range</b>						
Outdoor Op. Temp. (Cooling)	-10°C to 46°C	-10°C to 46°C	-10°C to 46°C	-10°C to 46°C	-10°C to 46°C	-10°C to 46°C
Outdoor Op. Temp. (Heating)	-15°C to 24°C	-15°C to 24°C	-15°C to 24°C	-15°C to 24°C	-15°C to 24°C	-15°C to 24°C
Refrigerant Type	R32					
<b>Pipe Sizes (mm)</b>						
Refig pre charge length (m)	20	20	30	30	30	30
Min / Max Pipe Length / Lift (m)	3 / 20 / 10	3 / 20 / 10	3 / 30 / 20	3 / 30 / 20	3 / 30 / 20	3 / 30 / 20
Condensate Drain (mm (OD))	16					
<b>Power</b>						
Power Supply	230 - 240 Volt / 50 Hz / 1 Phase					
Rated Power Input - Cooling (kW)	0.55	0.91	1.38	1.80	2.05	2.45
Power Input Range - Cooling (kW)	0.25 ~ 1.29	0.25 ~ 1.46	0.5 ~ 2.1	0.3 ~ 2.6	0.3 ~ 2.7	0.3 ~ 2.7
Rated Power Input - Heating (kW)	0.68	0.93	1.36	1.83	1.98	2.37
Power Input Range - Heating (kW)	0.25 ~ 1.25	0.25 ~ 1.7	0.5 ~ 2.75	0.3 ~ 2.65	0.5 ~ 2.8	0.5 ~ 2.8
Rated Running Current (C / H) (Amps)	2.81 / 3.48	4.65 / 4.76	6.06 / 5.97	7.95 / 8.07	9.00 / 8.07	10.8 / 10.45
Max Current (Amps)	7.0	8.1	11	12	12	12
Power supply To	Outdoor Unit					
Interconnecting Wire	3 Core + E					

Rated capacity measured in accordance with AS/NZS 3823 conditions:  
Cooling: Indoor 27°C db / 19°C wb; Ambient 35°C db  
Heating: Indoor 20°C db; Ambient 7°C db / 6°C wb

Mains power source - AC 230V and 50Hz  
Refer to Twemperzone Warranty for full conditions.

## temperzone Australia Pty Ltd

### ENQUIRIES

[sales@temperzone.com.au](mailto:sales@temperzone.com.au)

### AUSTRALIA

Sydney: (02) 8822 5700  
Melbourne: (03) 8769 7600  
Brisbane: (07) 3308 8333  
Adelaide: (08) 8115 2111

### DISTRIBUTORS

Newcastle: (02) 4962 1155  
Perth: (08) 6399 5900  
Launceston: (03) 6331 4209

### NEW ZEALAND

Auckland: (09) 279 5250  
Hamilton: (07) 839 2705  
Wellington: (04) 569 3262  
Christchurch: (03) 379 3216



WARRANTY\* \* Applicable to P Series, and S Series YHAB models purchased after 1st April 2021.

Must be maintained in accordance with maintenance recommendations.

[hitachiaircon.com.au](http://hitachiaircon.com.au)

[hitachiaircon.co.nz](http://hitachiaircon.co.nz)



The specifications of this catalogue may change without prior notice to allow Hitachi Cooling & Heating to incorporate the latest innovations for its customers. The information contained in this catalogue is merely informative. Hitachi Cooling & Heating declines any responsibility in the broadest sense, for damage, direct or indirect, arising from the use and / or interpretation of the recommendations in this catalogue.