

<b>Model</b>	<b>OPA 350RLTFPQ-DZ-S2</b>
Configuration	Horizontal Supply Air + Economiser + Viking
Item No. (Standard / Opposite Hand)	877-035-701-002 / 877-035-710-002
Configuration	Downward Supply Air + Economiser + Viking
Item No. (Standard / Opposite Hand)	877-035-723-002 / 877-035-732-002
Cooling capacity (net) *	34.8 kW
Cooling capacity range (gross)	18.0 ~ 45.4 kW
Heating capacity *	37.0 kW
Heating capacity range	13.9 ~ 47.0 kW
Electrical input - cooling	11.1 kW
Electrical input - heating	11.5 kW
EER / AEER (cooling)*	3.15 / 3.14
COP / ACOP (heating) *	3.21 / 3.19
Unit Controller	UC8
Refrigerant	R32
Refrigerant Charge	10.5 kg
Minimum floor area (@2.4m below ceiling diffuser)	58.6 m <sup>2</sup>
Compressor oil type	POE-46 (NXG5020 or equivalent)
Compressor type	inverter scroll
Power supply **	3 ph. 400 V ac 50 Hz + N + E
Compressor (3ph.) run amps *	14 A/ph
Compressor + VSD circuit breaker	40 A
Indoor fan motor size	EC plug 500 dia. 3.58kW
Nominal air flow at rating conditions	1800 l/s
Indoor fan motor (3ph.) - full load	5.5 A/ph.
Outdoor fan motor (3ph.) - full load	4.6 A/ph.
Outdoor fan max. static pressure @ 3800 l/s	125 Pa
Control circuit breaker (internal)	2 A
Auxiliary power outlet (1ph.) overload setting	10 A
Running amps (total system)*	17.5 / 15.5 / 19.5 A
Max. running amps (total system)	35 A/ph.
RCD type recommended	type B, 30mA, 3 pole
Net weight c/w Economiser	649 kg
Shipping weight c/w Economiser	674 kg

**Accessories:**

Filters - rated EU4/G4 disposable	019-400-001 600x300x50 (x1) 019-400-005 600x500x50 (x2)
Filters - rated EU4/G4 washable	019-000-037 600x300x50 (x1) 019-000-034 600x500x50 (x2)
Drain tundish (set of 2)	060-000-653

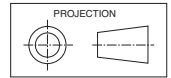
**Viking Controls:**

SMT-920 Controller + RS-SS Outdoor Air Sensor	supplied
RS-SSD Room temperature controller	supplied

Refer to temperzone for other options.

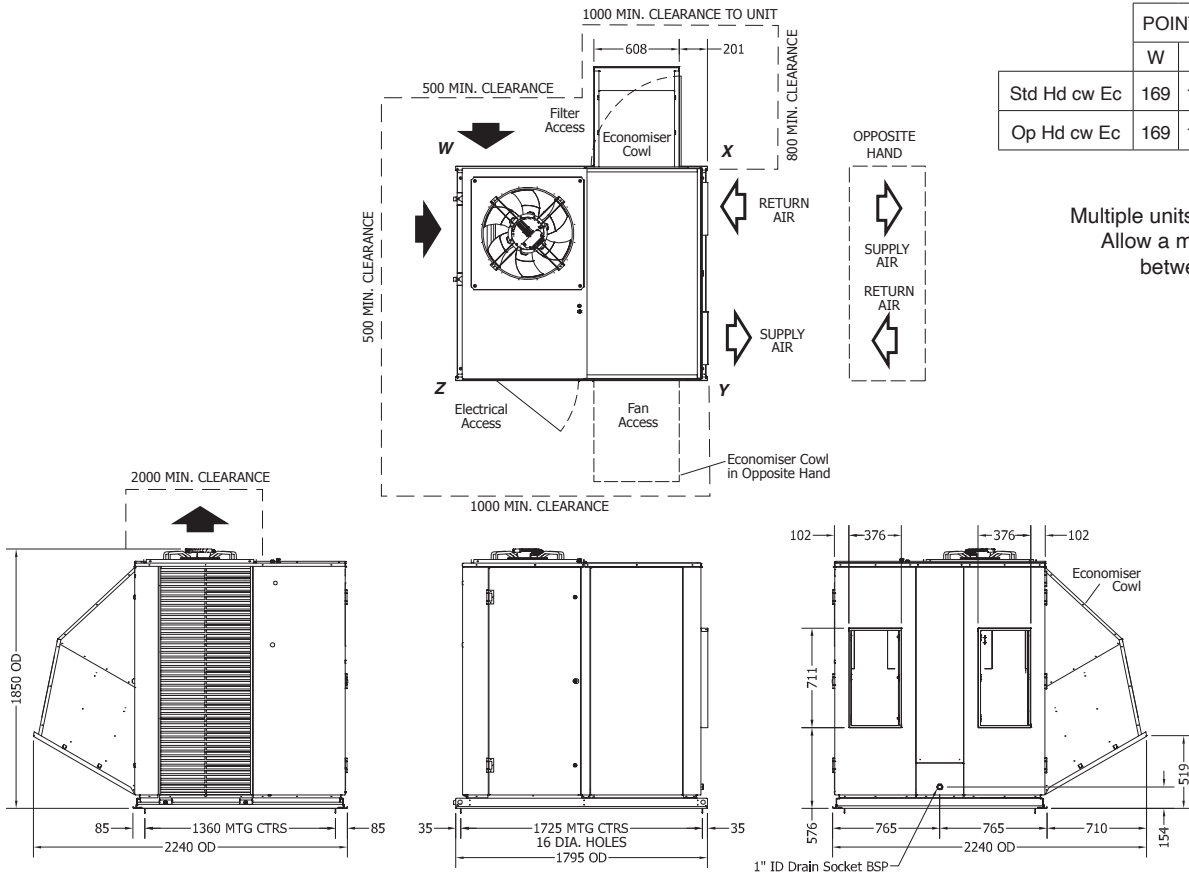
 \* Tested in accordance with AS/NZS 3823  
 \*\* Voltage range: 380–440V

# DIMENSIONS (mm)



Not to Scale

## OPA 350RLTFP01-DZ-S2 Standard Hand, Horizontal Supply

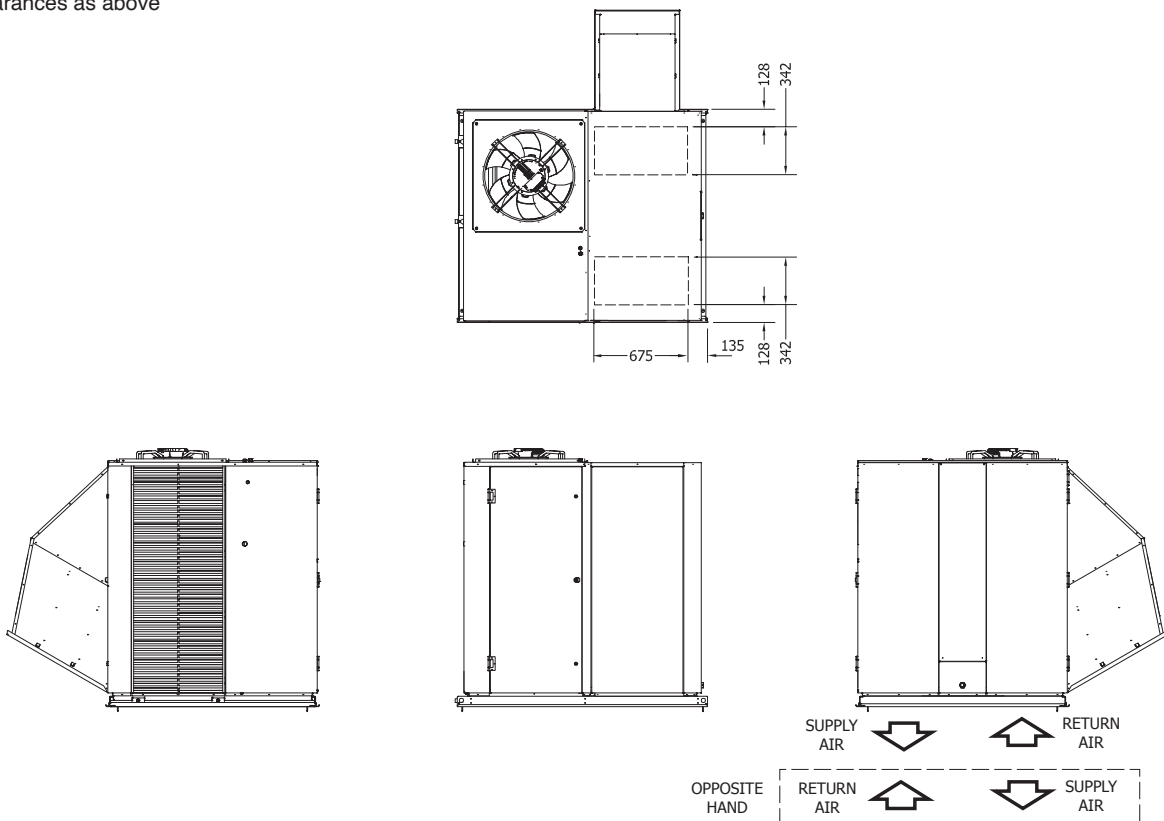


	POINT LOADS (kg)			
	W	X	Y	Z
Std Hd cw Ec	169	137	164	151
Op Hd cw Ec	169	164	137	151

Multiple units side-by-side:  
Allow a minimum of 2m  
between coil faces.

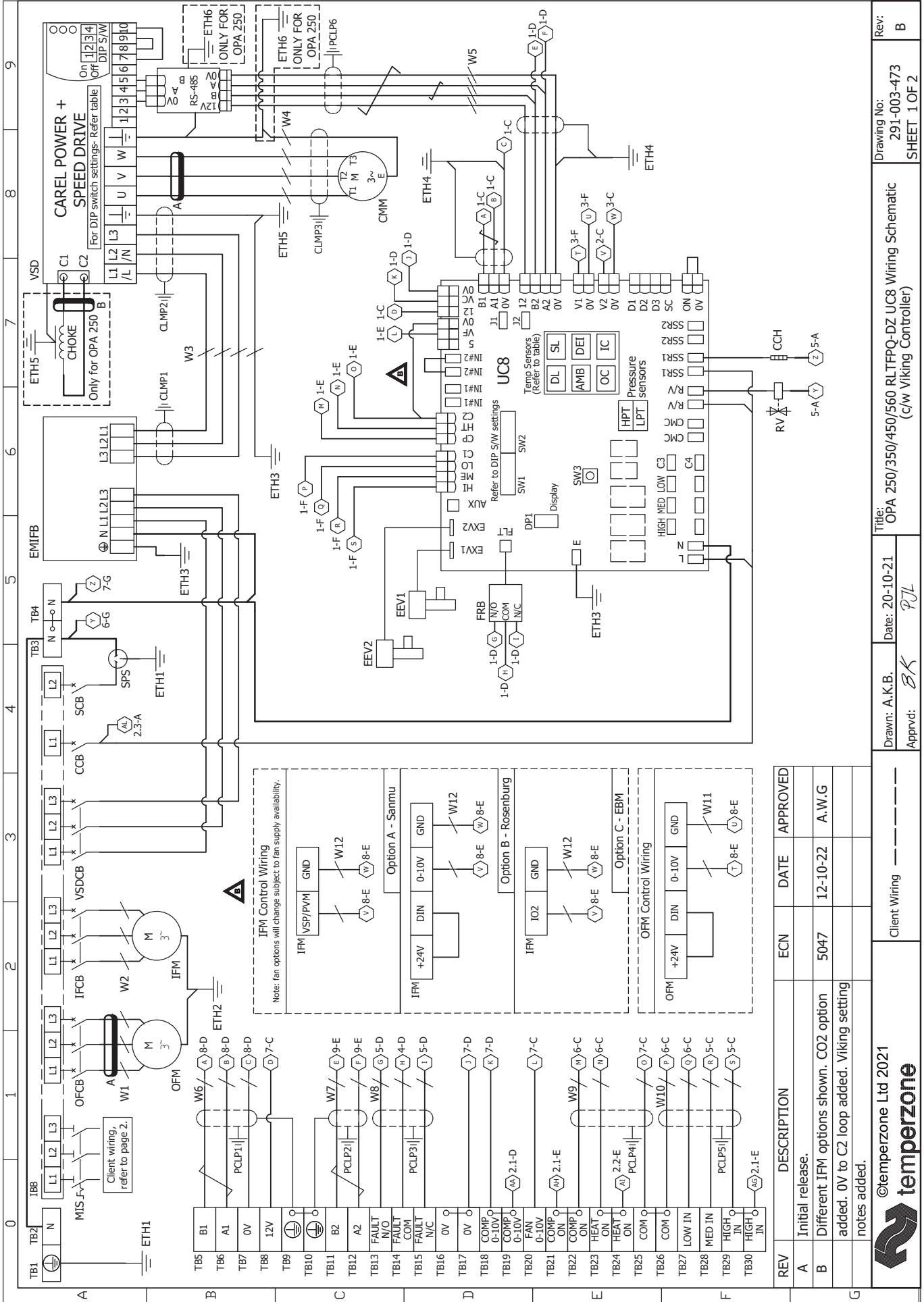
## OPA 350RLTFP23-DZ-S2 Standard Hand, Downward Supply

Clearances as above



### NOTE

Specifications are subject to change without notice due to the manufacturer's ongoing research and development programme.



©temperzone Ltd 2021

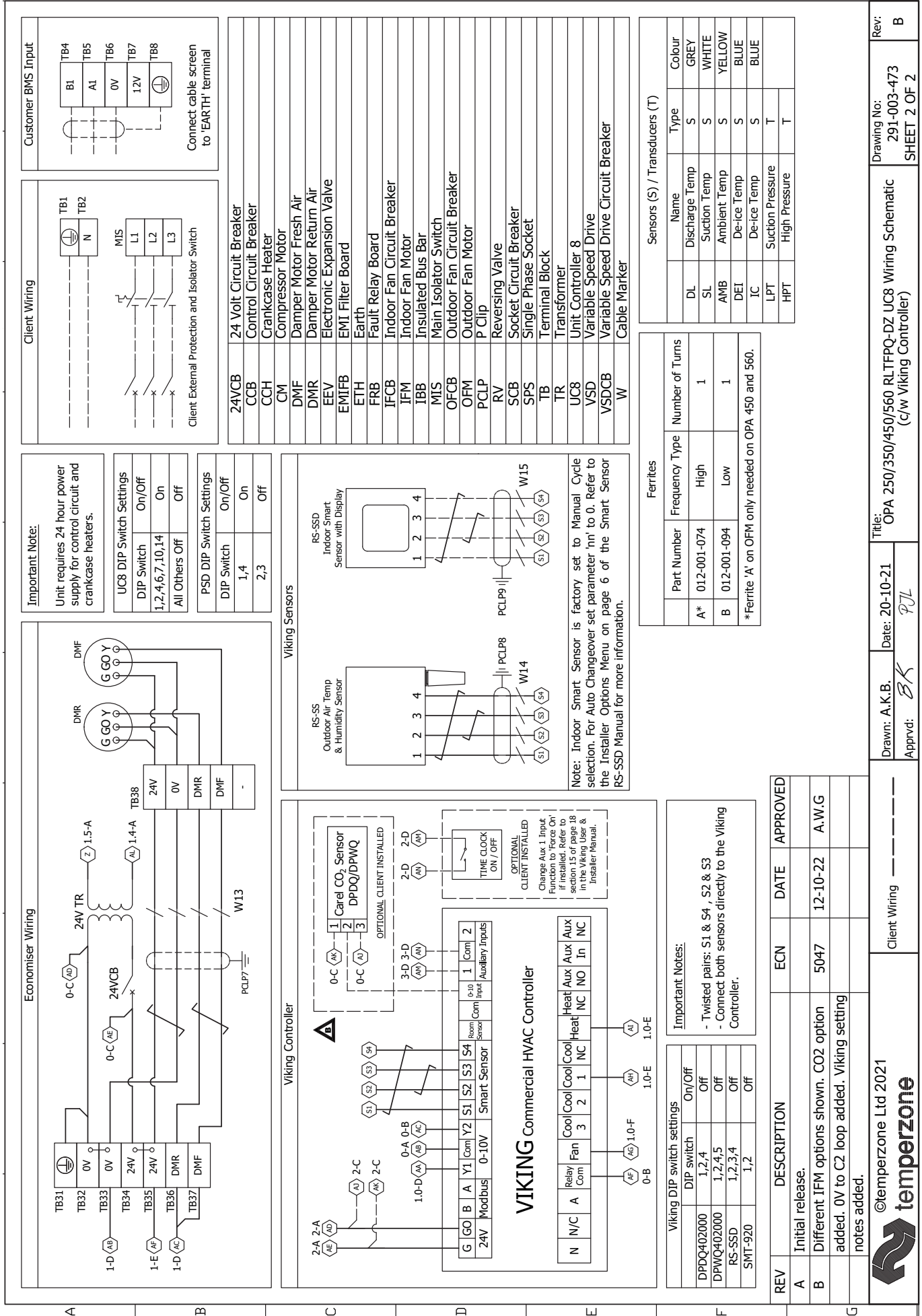
Client Wiring

Drawn: A.K.B.  
 Date: 20-10-21  
 P.J.L.

Title: OPA 250/350/450/560 RL TFPQ-DZ UC8 Wiring Schematic  
 (c/w Viking Controller)

Drawing No: 291-003-473  
 SHEET 1 OF 2

Rev: B

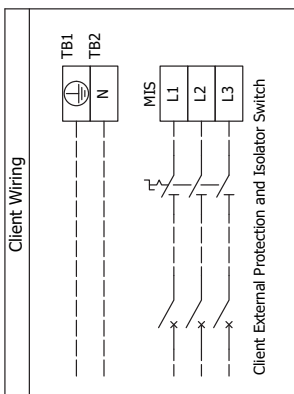
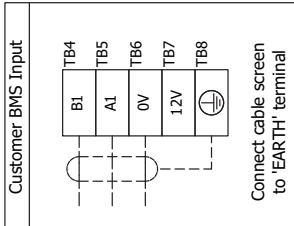


**Important Note:**  
Unit requires 24 hour power supply for control circuit and crankcase heaters.

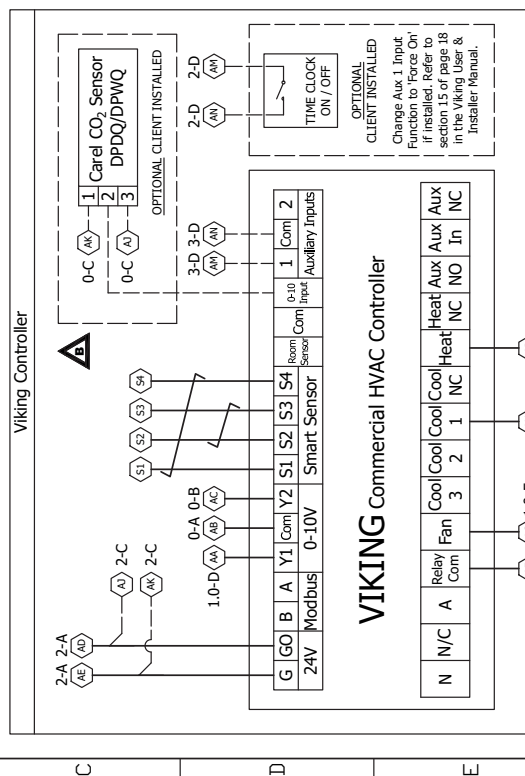
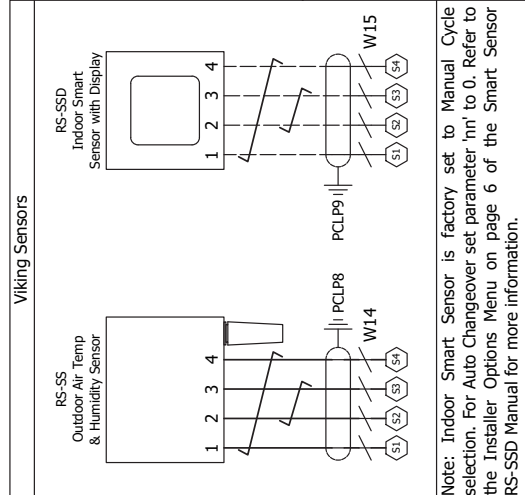
UC8 DIP Switch Settings	
DIP Switch	On/Off
1,2,4,6,7,10,14	On
All Others	Off

PSD DIP Switch Settings	
DIP Switch	On/Off
1,4	On
2,3	Off



24VCB	24 Volt Circuit Breaker
CCB	Control Circuit Breaker
CCH	Crankcase Heater
CM	Compressor Motor
DMF	Damper Motor Fresh Air
DMR	Damper Motor Return Air
EEV	Electronic Expansion Valve
EMIFB	EMI Filter Board
ETH	Earth
FRB	Fault Relay Board
IFCB	Indoor Fan Circuit Breaker
IFM	Indoor Fan Motor
IBB	Insulated Bus Bar
MIS	Main Isolator Switch
OFCB	Outdoor Fan Circuit Breaker
OFM	Outdoor Fan Motor
PCLP	P Clip
RV	Reversing Valve
SCB	Socket Circuit Breaker
SPS	Single Phase Socket
TB	Terminal Block
TR	Transformer
UC8	Unit Controller 8
VSD	Variable Speed Drive
VSDCB	Variable Speed Drive Circuit Breaker
W	Cable Marker



**Sensors (S) / Transducers (T)**

Name	Type	Colour
DL	Discharge Temp	GREY
SL	Suction Temp	WHITE
AMB	Ambient Temp	YELLOW
DEI	De-ice Temp	BLUE
IC	De-ice Temp	BLUE
LPT	Suction Pressure	T
HPT	High Pressure	T

**Ferrites**

Part Number	Frequency Type	Number of Turns
A*	012-001-074	High
B	012-001-094	Low

\* Ferrite 'A' on OFM only needed on OPA 450 and 560.

**Viking DIP switch settings**

DIP Switch	On/Off
DPDQ402000	Off
DPWQ402000	Off
RS-SSD	Off
SMT-920	Off

REV	DESCRIPTION	ECN	DATE	APPROVED
A	Initial release.			
B	Different IFM options shown. CO2 option added. 0V to C2 loop added. Viking setting notes added.	5047	12-10-22	A.W.G

Drawn: A.K.B.	Date: 20-10-21	Apprvd: <i>BK</i>	Title: OPA 250/350/450/560 RLTFPQ-DZ UC8 Wiring Schematic (c/w Viking Controller)
Client Wiring			Rev: B

