

Model	OPA 1400RKTМ-P ECO ULTRA
Configuration	Horizontal Supply Air
Item No. (Standard / Opposite Hand)	576-141-701 / 576-141-710
Reheat Model Item No. (Standard / Opposite Hand)	576-140-701 / 576-140-710
Cooling capacity (gross) range	17.4 ~ 148 kW
Cooling capacity (net) *	128 kW
Heating capacity (gross) range	14.2 ~ 133 kW
Heating capacity *	115 kW
Electrical input - cooling	40.4 kW
Electrical input - heating	34.6 kW
EER / AEER (cooling)	3.15 / 3.14
COP / ACOP (heating)	3.33 / 3.31
Operating Range (outdoor ambient) - cooling	-10°C ~ 50°C
Operating Range (outdoor ambient) - heating	-15°C ~ 25°C
Master Controller	c.pCO
Slave Controllers	UC8 (x4)
Refrigerant	R410A
Refrigerant Charge	11.5 kg/sys.
Refrigerant Charge - Reheat model	Sys. 1 & 3: 12.5 kg/sys. Sys. 2 & 4: 11.5 kg/sys.
Compressor oil type	PVE 320HV
Compressor type	Inverter (x4)
Power supply **	3 ph. 400 V ac 50 Hz + N + E
Compressor (3ph.) run amps at rating cond.	16 A/ph. (x4)
Compressor circuit breaker	32 A (x4)
Indoor fan motor size	EC Plug 1.95kW (x4)
Nominal air flow at rating conditions	6,800 l/s
Indoor fan motor (3ph.)	3 A/ph. (x4)
Outdoor fan motor (3ph.) - full load	1.9 A/ph. (x4)
Outdoor fan motor – max. static pressure	120 Pa
Control circuit breaker (internal)	4 A
Auxiliary power outlet (1ph.) overload setting	10 A
Running amps (total system) *	74 / 71 / 74 A
Max. running amps (total system)	103 A/ph.
RCD type recommended	type B, 30mA, 3 pole
Net weight	2409 kg
Net weight - Reheat model	2469 kg

Accessories:

Filters - rated EU4/G4 disposable	019-400-005 600x500x50 (x3) 019-400-007 600x600x50 (x6)
-----------------------------------	--

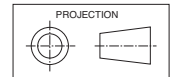
* Tested in accordance with AS/NZS 3823

** Voltage fluctuation range: 380–440V

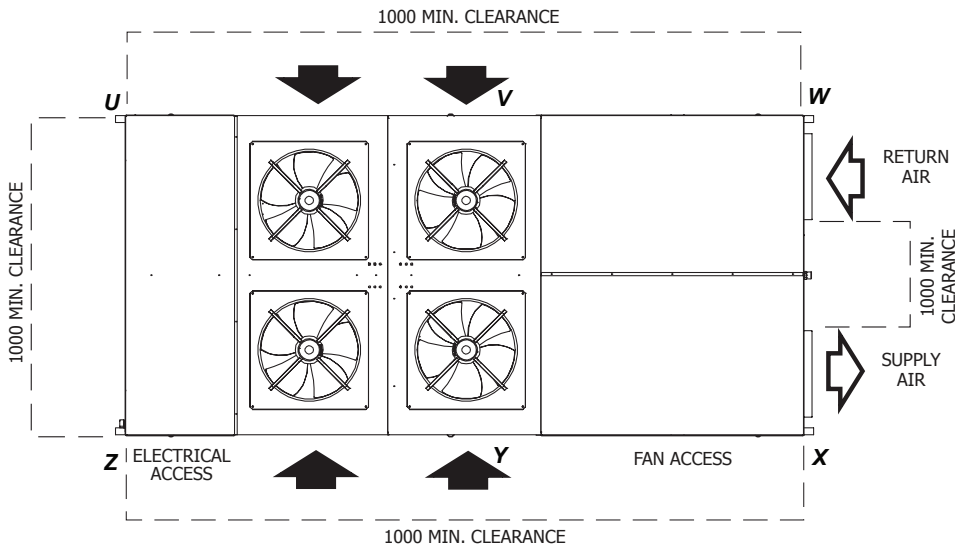
19007

DIMENSIONS (mm)

OPA 1400RKT01-P Standard Hand

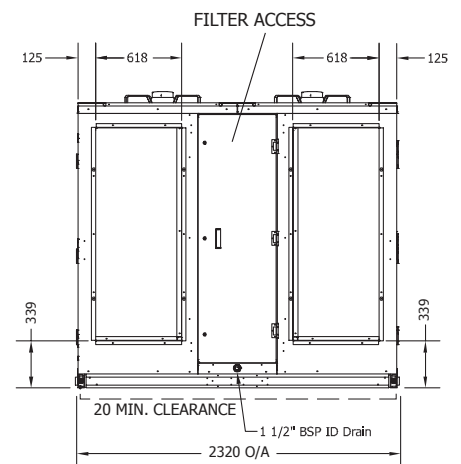
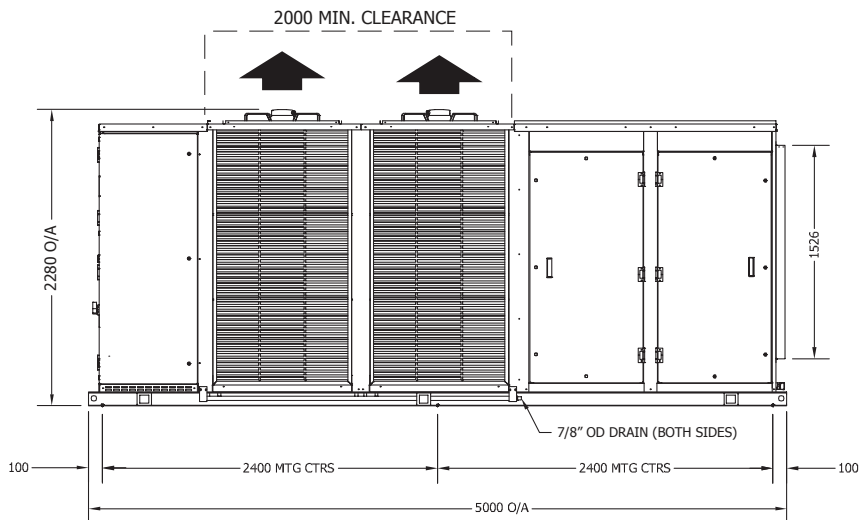


Not to Scale



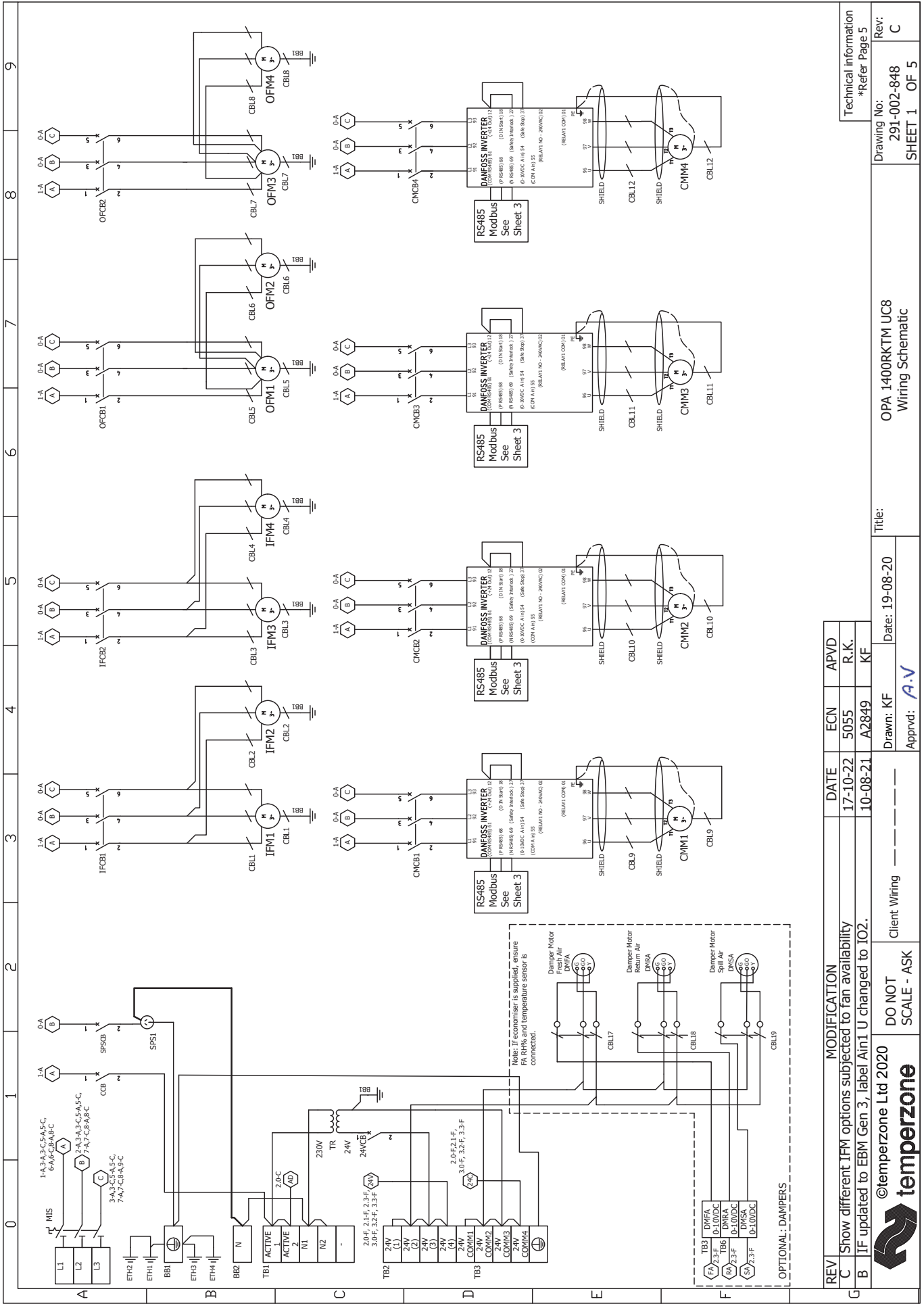
POINT LOADS (kg)					
U	V	W	X	Y	Z
508	399	289	426	404	383

NOTE
Opposite Hand version also available; mirrored dimensions.



NOTE
Specifications are subject to change without notice due to the manufacturer's ongoing research and development programme.

WIRING

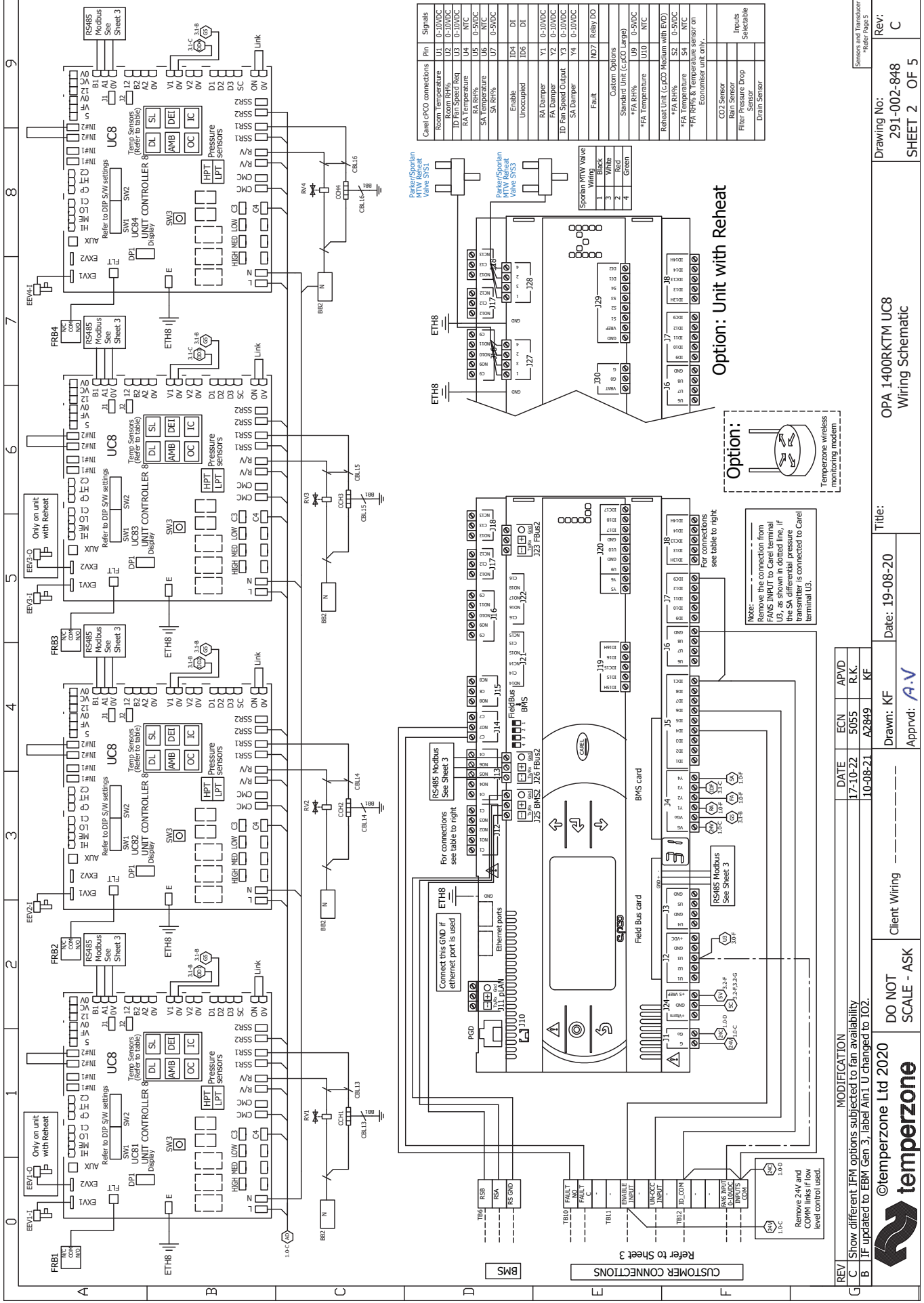


9 8 7 6 5 4 3 2 1 0

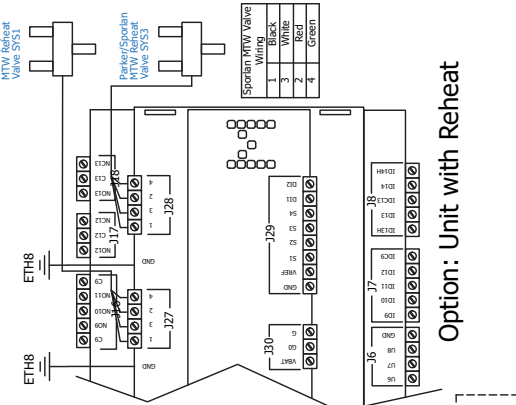
REV	MODIFICATION	DATE	ECN	APVD
C	Show different IFM options subjected to fan availability	17-10-22	5055	R.K.
B	IF updated to EBM Gen 3, label AirI U changed to IO2.	10-08-21	A2849	KF

Technical information *Refer Page 5	
Drawing No: 291-002-848	Rev: C
Title: OPA 1400RTM UC8 Wiring Schematic	
Date: 19-08-20	Drawn: KF
Approved: <i>A.V</i>	
Client Wiring	
DO NOT SCALE - ASK	

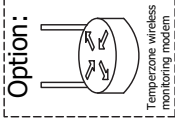




Core/PCO connections	Pin	Signals
Room Temperature	U1	0-10VDC
Room RH%	U2	0-10VDC
ID Fan Speed Ref	U3	0-10VDC
RA Temperature	U4	NTC
SA Temperature	U5	0-5VDC
SA RH%	U6	NTC
SA RH%	U7	0-5VDC
Enable	ID4	DI
Unoccupied	ID6	DI
RA Damper	Y1	0-10VDC
FA Damper	Y2	0-10VDC
ID Fan Speed Output	Y3	0-10VDC
SA Damper	Y4	0-10VDC
Relay	NO7	Relay DO
Custom Options		
Standard Unit (C-PCO Large)		
FA RH%	U9	0-5VDC
FA Temperature	U10	NTC
Reheat Unit (C-PCO Medium with EVD)		
FA RH%	S2	0-5VDC
FA Temperature	S4	NTC
FA RH% & temperature sensor on Economiser unit only.		
CO2 Sensor		Inputs
Room Sensor		Selectable
Filter Pressure Drop Sensor		
Drain Sensor		



Option: Unit with Reheat



Note: Remove the connection from FANS INPUT to Carel terminal U3, as shown in dotted line, if the SA differential pressure transmitter is connected to Carel terminal U3.

REV	MODIFICATION	DATE	ECN	APVD
C	Show different IPM options subjected to fan availability	17-10-22	5055	R.K.
B	IF updated to EBM Gen 3, label AIn1 U changed to IO2.	10-08-21	A2849	KF

Client Wiring
DO NOT SCALE - ASK

©temperzone Ltd 2020
temperzone

Remove 24v and COM1 links if flow level control used.

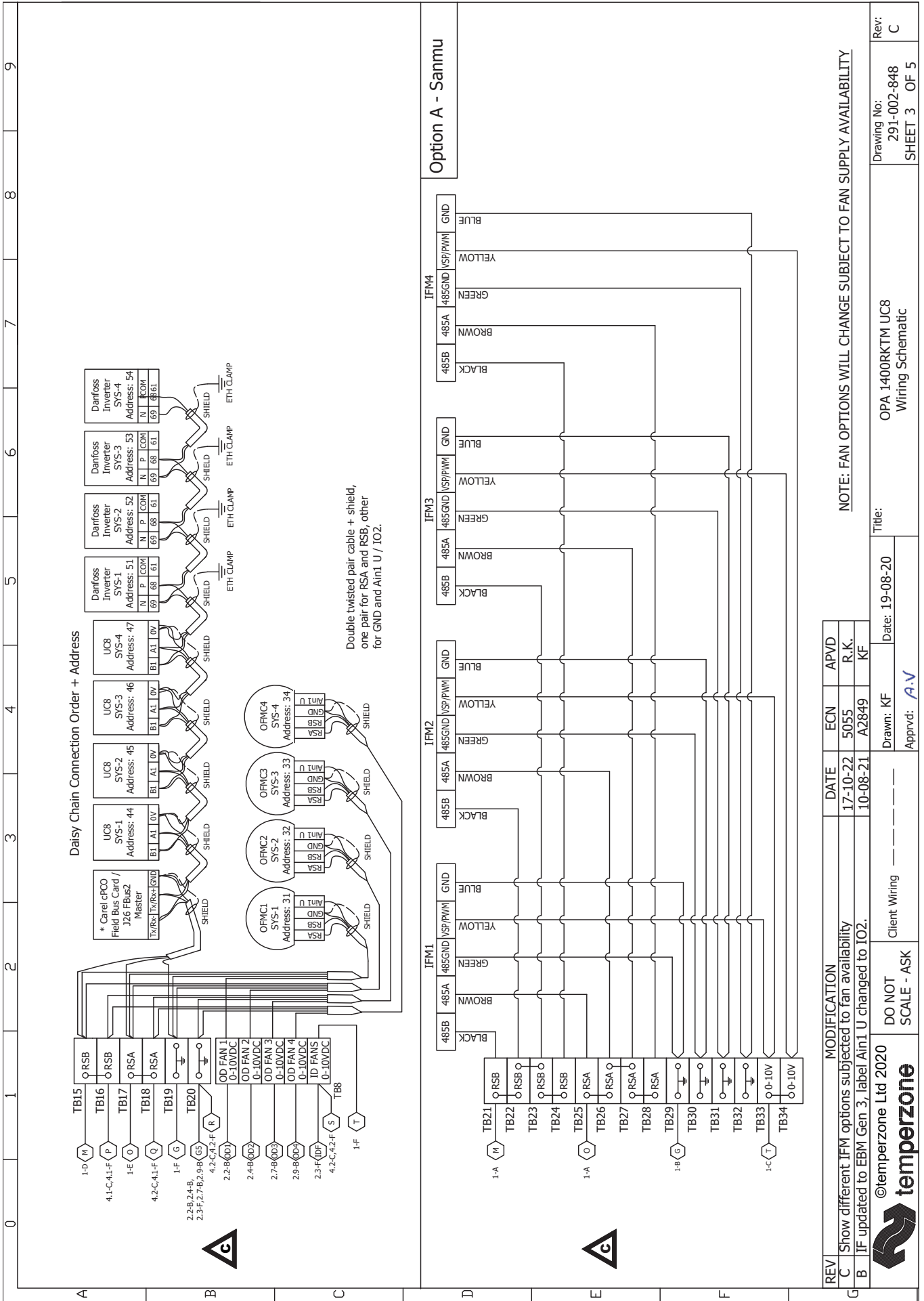
Date: 19-08-20

OPA 1400RKTU UC8
Wiring Schematic

Drawing No: 291-002-848
SHEET 2 OF 5

Rev: C

Sensors and Transmitters
*Refer Page 5



REV	MODIFICATION	DATE	ECN	APVD
C	Show different IFM options subjected to fan availability	17-10-22	5055	R.K.
B	IF updated to EBM Gen 3, label Ain1. U changed to IO2.	10-08-21	A2849	KF

©temperzone Ltd 2020

Client Wiring

DO NOT SCALE - ASK

Drawn: KF Date: 19-08-20

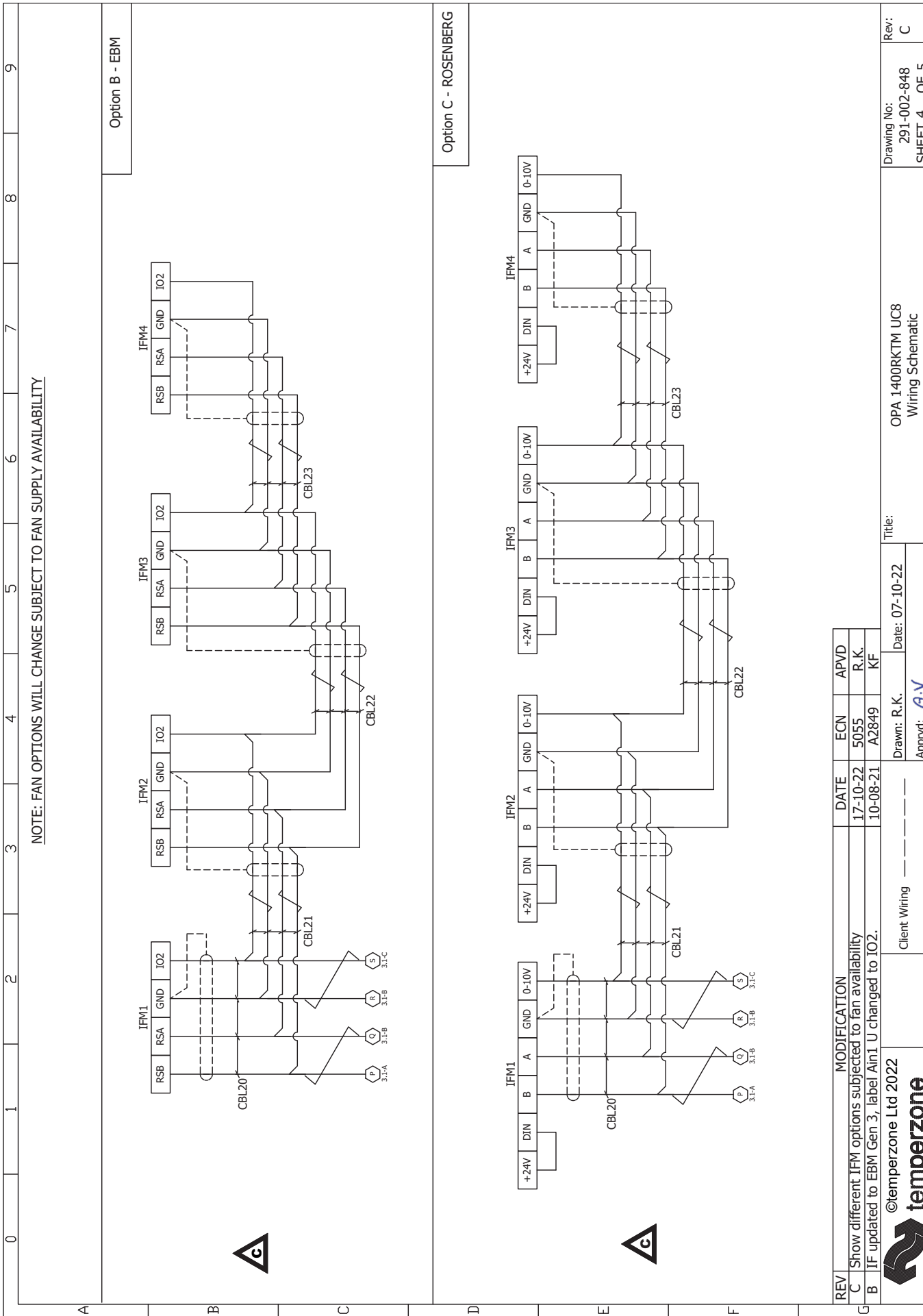
Approved: AV

NOTE: FAN OPTIONS WILL CHANGE SUBJECT TO FAN SUPPLY AVAILABILITY

OPA 1400RKT™ UC8 Wiring Schematic

Drawing No: 291-002-848 SHEET 3 OF 5

Rev: C



Option B - EBM

Option C - ROSENBERG

REV	MODIFICATION	DATE	ECN	APVD
C	Show different IFM options subjected to fan availability	17-10-22	5055	R.K.
B	IF updated to EBM Gen 3, label Ain1 U changed to IO2.	10-08-21	A2849	KF

©temperzone Ltd 2022

Client Wiring

Date: 07-10-22

Drawn: R.K. Title: OPA 1400RKTU UC8 Wiring Schematic

Approved: *A.V*

Rev: 291-002-848 SHEET 4 OF 5



CLIENT WIRING

Refer 'Installation & Maintenance' pamphlet for more information.

