

SPECIFICATIONS



Model	OPA 2100RKTM-P ECO ULTRA
Configuration	Horizontal Supply Air
Item No. (Standard / Opposite Hand)	576-211-701 / 576-211-710
Reheat Model Item No. (Standard / Opposite Hand)	576-210-701 / 576-210-710
Cooling capacity (gross) range	18 ~ 200 kW
Cooling capacity (net) to AS/NZS 3823 T1	178 kW
Heating capacity (gross) range	17 ~ 187 kW
Heating capacity H1	187 kW
Electrical input - cooling	57.9 kW
Electrical input - heating	59.1 kW
EER / AEER (cooling)	3.08 / 3.06
COP / ACOP (heating)	3.16 / 3.15
Master Controller	c.pCO
Slave Controllers	UC8 (x4)
Refrigerant	R410A
Refrigerant Charge	16.5 kg/sys.
Refrigerant Charge - Reheat model	Sys. 1 & 3: 17.5 kg/sys. Sys. 2 & 4: 16.5 kg/sys.
Compressor oil type	polyolester 160SZ (POE)
Compressor type	Inverter (x4)
Power supply	3 ph. 400V ac 50Hz
Compressor (3ph.) run amps at rating cond.	20 A/ph. (x4)
Compressor circuit breaker	32 A (x4)
Indoor fan motor size	EC Plug 3.5kW (x4)
Nominal air flow at rating conditions	10,000 l/s
Indoor fan motor (3ph.)	5.4 A/ph. (x4)
Outdoor fan motor (3ph.) - full load	3.9 A/ph. (x4)
Outdoor fan motor – max. static pressure	120 Pa
Control circuit breaker (internal)	4 A
Auxiliary power outlet (1ph.) overload setting	10 A
Running amps (total system)	94 / 90 / 97 A
Max. running amps (total system)	142 / 136 / 142 A
Net weight	3218 kg
Net weight - Reheat model	3278 kg

Accessories:

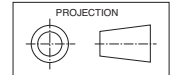
Filters - rated EU4/G4 disposable	019-400-004 500x500x50 (x12) 019-400-005 500x600x50 (x4)
-----------------------------------	---

Tested in accordance with AS/NZS 3823

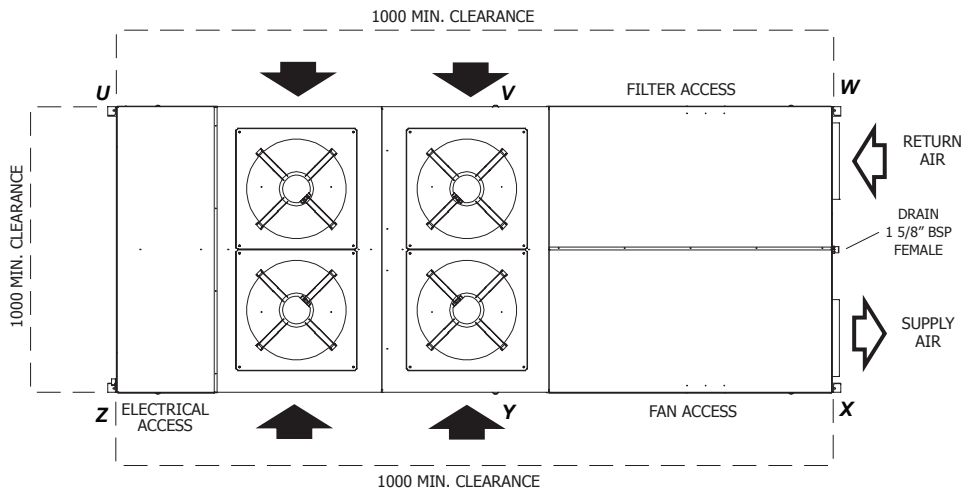
17023

DIMENSIONS (mm)

OPA 2100RKT01-P Standard Hand

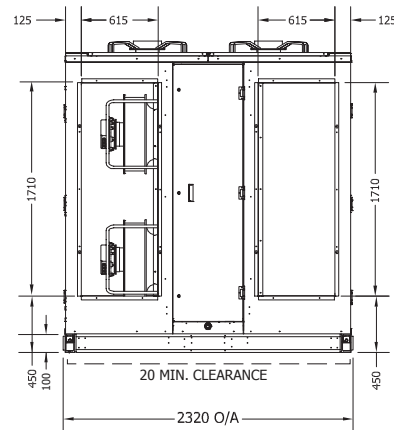
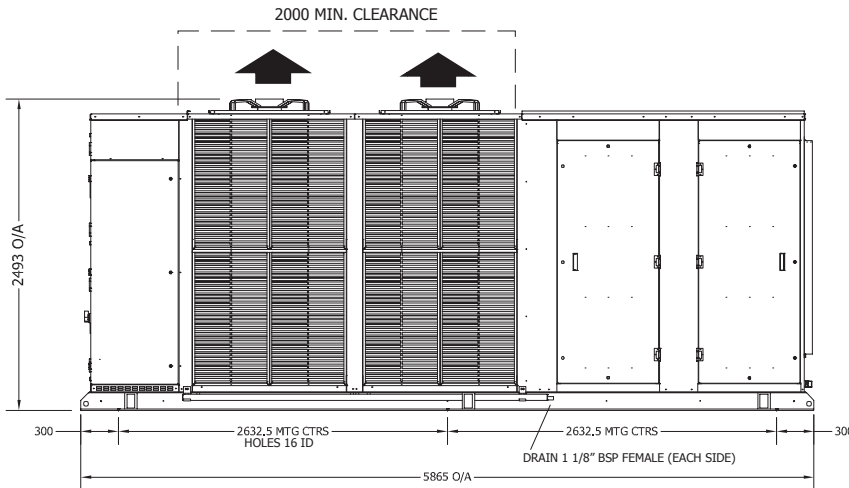


Not to Scale



POINT LOADS (kg)					
U	V	W	X	Y	Z
635	520	406	569	552	536

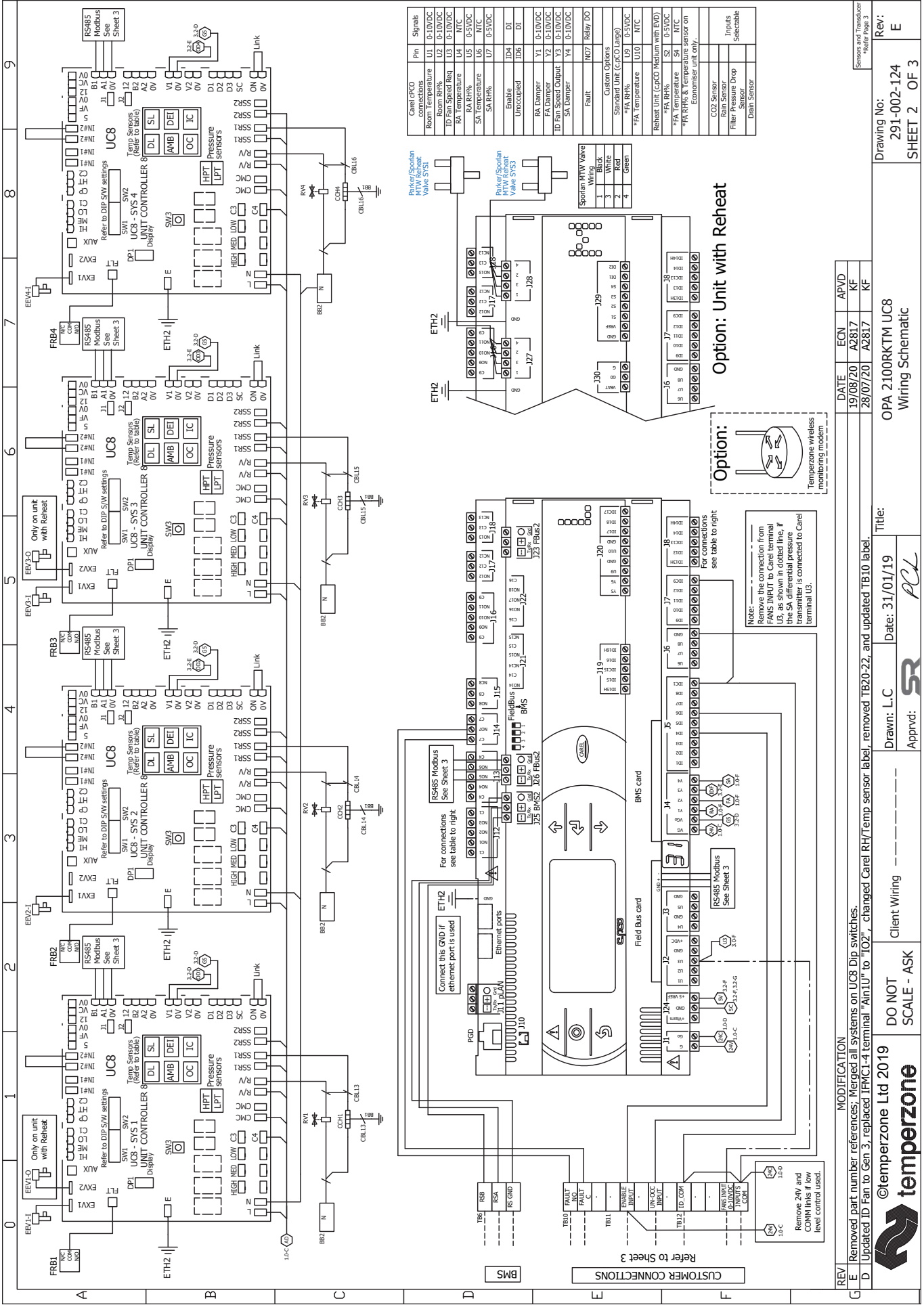
NOTE
Opposite Hand version also available;
mirrored dimensions.



NOTE

Specifications are subject to change without notice due to the manufacturer's ongoing research and development programme.

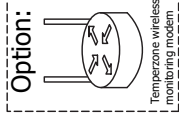




Carrier CP/CO connections	Pin	Signals
Reheat Unit	U1	0-10VDC
Room Pressure	U2	0-10VDC
ID Fan Speed Req	U3	0-10VDC
RA Temperature	U4	NTC
SA Temperature	U5	0-5VDC
SA RH%	U6	NTC
SA RH%	U7	0-5VDC
Unoccupied	ID4	DI
RA Damper	Y1	0-10VDC
RA Damper	Y2	0-10VDC
ID Fan Speed Output	Y4	0-10VDC
SA Damper	Y4	0-10VDC
Relheat Unit (CP/CO Medium with EVD)		
RA RH%	U10	0-5VDC
RA RH%	U11	0-5VDC
RA RH% & Temperature sensor on Economiser unit only.		
CO2 Sensor		Inputs
Rain Sensor		Selectable
Filter Pressure Drop		
Drain Sensor		

Sporian RH/W Valve	Wiring
1	Black
2	White
3	Red
4	Green

Option: Unit with Reheat



Note: Remove the connection from FANS INPUT to Carrel terminal U3, as shown in dotted line, if the SA differential pressure transmitter is connected to Carrel terminal U5.

REV	MODIFICATION	DATE	ECN	APVD
G	E Removed part number references; Merged all systems on UC8 Dip switches.	19/08/20	A2817	KF
D	Updated ID Fan to Gen 3, replaced IFMCI-4 terminal "Am1U" to "IO2", changed Carrel RH/Temp sensor label, removed TB20-22, and updated TB10 label.	28/07/20	A2817	KF

Drawing No: 291-002-124
SHEET 2 OF 3

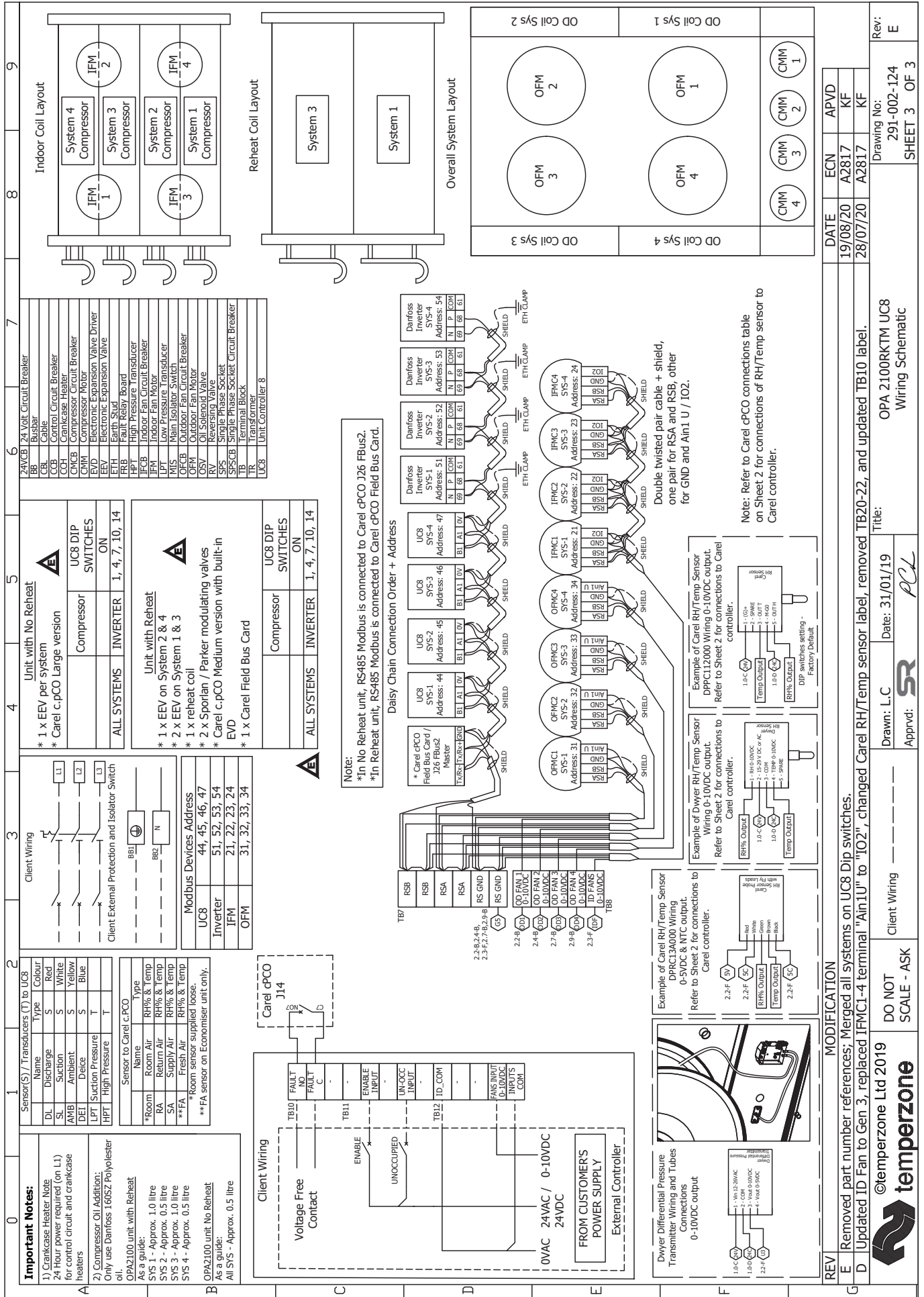
Rev: E

OPA 2100RKT M UC8
Wiring Schematic

Date: 31/01/19
Drawn: L.C
Approved: *SR*

Client Wiring
DO NOT SCALE - ASK

©temperzone Ltd 2019
temperzone



MODIFICATION

REV	DATE	ECN	APVD
G	19/08/20	A2817	KF
D	28/07/20	A2817	KF

Removed part number references; Merged all systems on UC8 Dip switches.
Updated ID Fan to Gen 3; replaced IFMC1-4 terminal "Ain1U" to "IO2"; changed Carel RH/Temp sensor label, removed TB20-22, and updated TB10 label.

©temperzone Ltd 2019

temperzone

DO NOT SCALE - ASK

Client Wiring

Drawn: L.C

Date: 31/01/19

Appvd: *SR*

Title: OPA 2100RKTM UC8 Wiring Schematic

Rev: E

291-002-124

SHEET 3 OF 3