

SPECIFICATIONS



Indoor Unit	(524-281-711)	ISU 141KYX
Outdoor Unit	(536-271-311)	OSA 141RKSGH (1Ø)
Cooling capacity (net) to AS/NZS 3823 T1		13.2 kW
Heating capacity H1		12.8 kW
Electrical input - cooling		4.1 kW
Electrical input - heating		3.6 kW
EER / AEER (cooling)		3.25 / 3.23
COP / ACOP (heating)		3.58 / 3.56
Unit Controllers		UC8 / IUC
Refrigerant		R410A
Refrigerant precharge for 10 m		4.5 kg *
Additional charge req'd for over 10 m		50 g/m
Base refrigerant charge OSA		3.5 kg
Maximum extended line length		60 m using 19 mm suction
Separation limit: OSA above ISU		20 m
Separation limit: OSA below ISU		20 m
Suction line $\leq 20\text{m}$ / $>20\text{m}$		16 / 19 mm OD
Liquid line		9.5 mm OD
Compressor oil type		POE 32-3MAF (or equivalent)
Additional oil charge over 40m line length		10 ml/m
Compressor type		digital scroll
Power supply via OSA		1 ph. 230V ac 50Hz
Compressor run amps at rating cond.		17 A
Compressor run capacitor		50 μfd (x2)
Indoor fan motor size		230 W (x2)
Rated indoor fan speed		HIGH (9.5V)
Indoor fan motor (1ph.) - full load		1.4 A (x2)
Outdoor fan motor (1ph.) - full load		1.4 A
Outdoor fan capacitor size		6 μfd
Control circuit breaker (internal)		10 A
Running amps (total system)		18.4 A
Max. running amps (total system)		24 A
Net weight ISU		79 kg
Net weight OSA		128 kg

Accessories:

ISU Replacement filter (x3)	119-123-001 590x244x4
OSA Drain connection adaptor 25/13mm	060-000-039
OSA Anti-vibration mounts - rubber (x4)	060-000-170

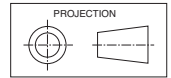
Optional Controls:

SAT-3 Room temperature controller	201-000-146
TZT-100 Room temperature controller	201-000-350

Refer to temperzone for other options, eg remote sensors, connection wires.

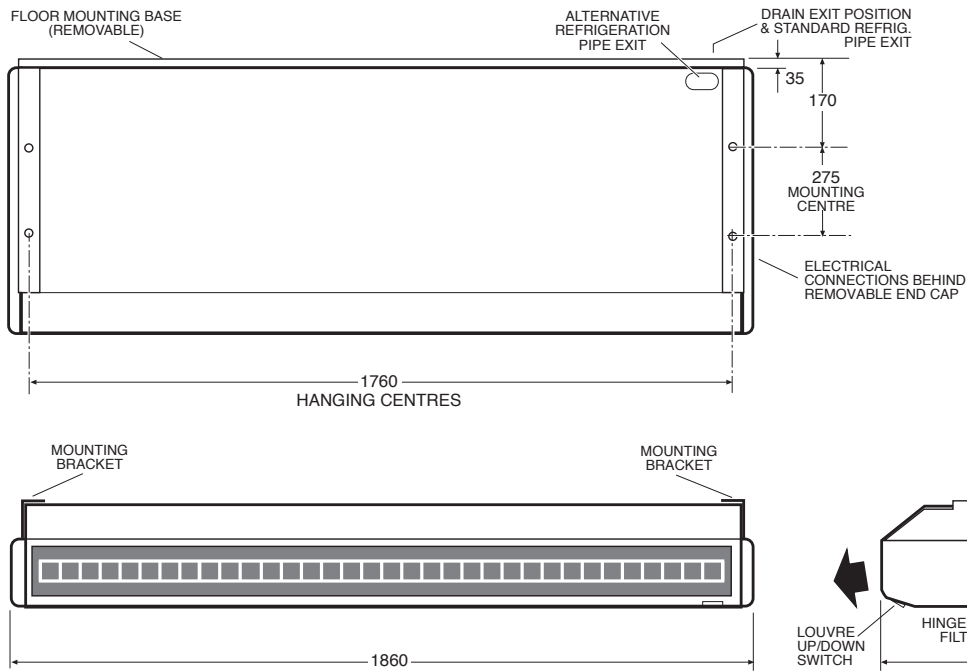
* **Note:** Remove 500 g from precharge for this ISU/OSA combination. Deduct a further 250g for line lengths $<5\text{m}$. Other unit combinations use the full precharge.

DIMENSIONS (mm)



Not to Scale

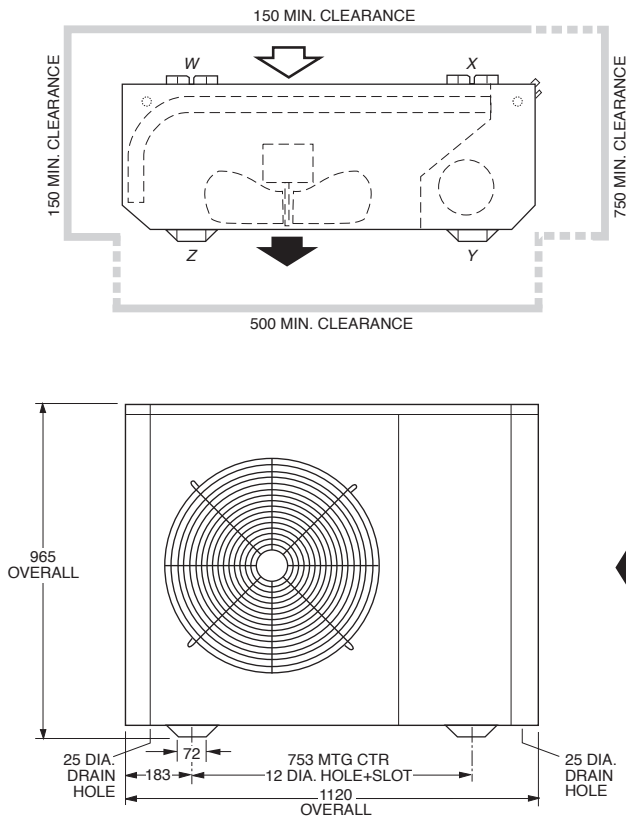
ISU 141KYX Indoor Unit



Note:

1. Weight distribution 40 kg at each end.
2. Fan motor can be accessed from panel above, below or sides; no more than two panels at once.

OSA 141RKSG Outdoor Unit



POINT LOADS (kg)			
W	X	Y	Z
16	38	50	24

Recommended

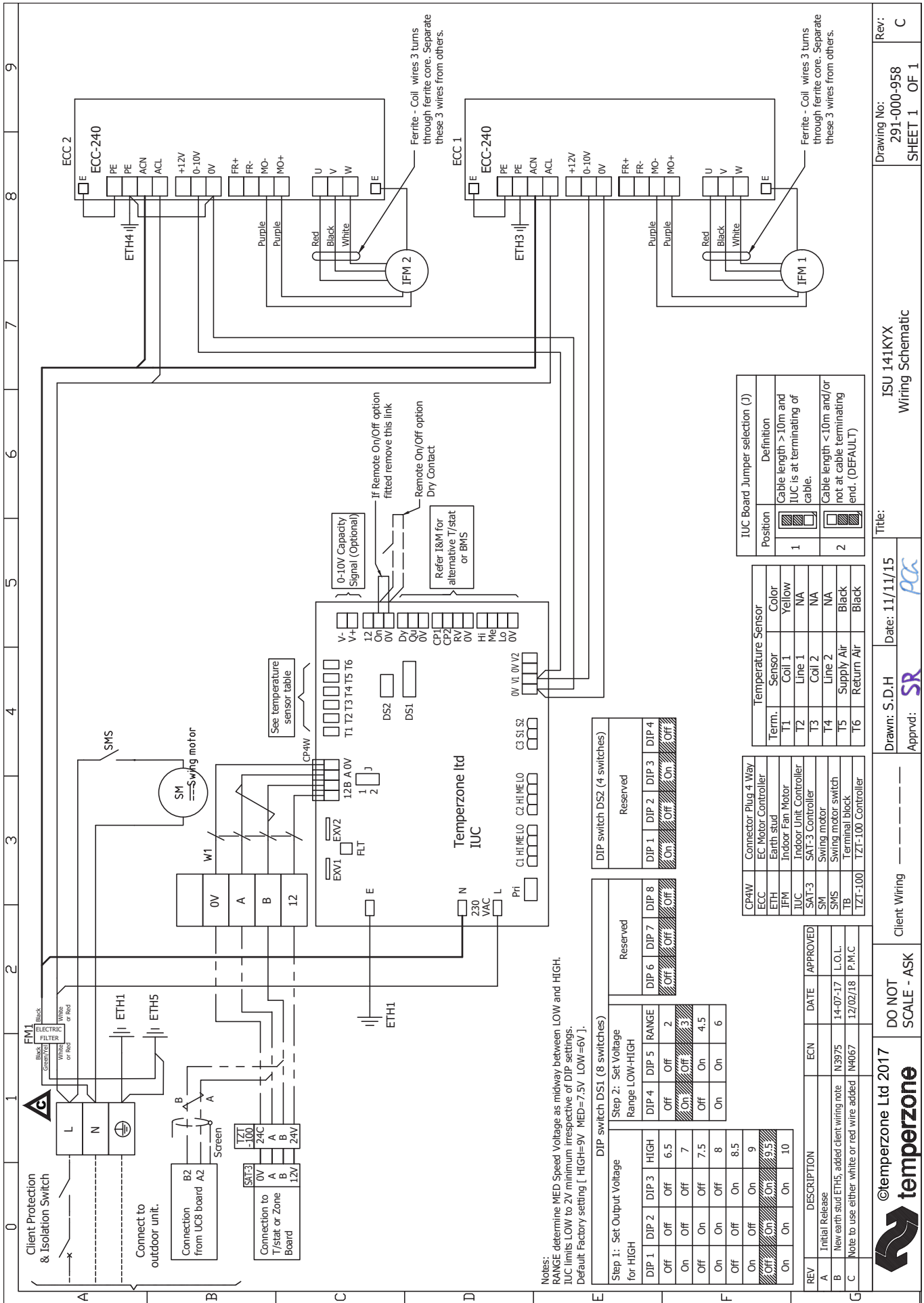
Connecting Pipe Sizes

Suction : 19 mm OD
Liquid : 10 mm OD

NOTE

Specifications are subject to change without notice due to the manufacturer's ongoing research and development programme.





Notes:
 RANGE determine MED Speed Voltage as midway between LOW and HIGH.
 IUC limits LOW to 2V minimum irrespective of DIP settings.
 Default Factory setting [HIGH=9V MED=7.5V LOW=6V].

DIP switch DS1 (8 switches)

Step 1: Set Output Voltage for HIGH		Step 2: Set Voltage Range LOW-HIGH	
DIP 1	DIP 2	DIP 3	DIP 4
Off	Off	Off	Off
On	Off	Off	On
Off	On	Off	On
On	On	Off	On
Off	Off	On	On
On	Off	On	On
Off	On	On	On
On	On	On	On

DIP switch DS2 (4 switches)

Reserved			
DIP 1	DIP 2	DIP 3	DIP 4
On	Off	Off	Off
On	On	Off	Off
On	On	On	Off
On	On	On	On

REV	DESCRIPTION	ECN	DATE	APPROVED
A	Initial Release			
B	New earth stud ETH5, added client wiring note	N3975	14-07-17	L.O.L.
C	Note to use either, white or red wire added	N4067	17/02/18	P.M.C

CP4W Connector Plug 4 Way

Term.	Sensor	Color
T1	Coil 1	Yellow
T2	Line 1	NA
T3	Coil 2	NA
T4	Line 2	NA
T5	Supply Air	Black
T6	Return Air	Black

IUC Board Jumper selection (J)

Position	Definition
1	Cable length > 10m and IUC is at terminating of cable.
2	Cable length < 10m and/or not at cable terminating end. (DEFAULT)



©temperzone Ltd 2017
 DO NOT SCALE - ASK

Client Wiring

Drawn: S.D.H
 Date: 11/11/15
 Appvd: SR

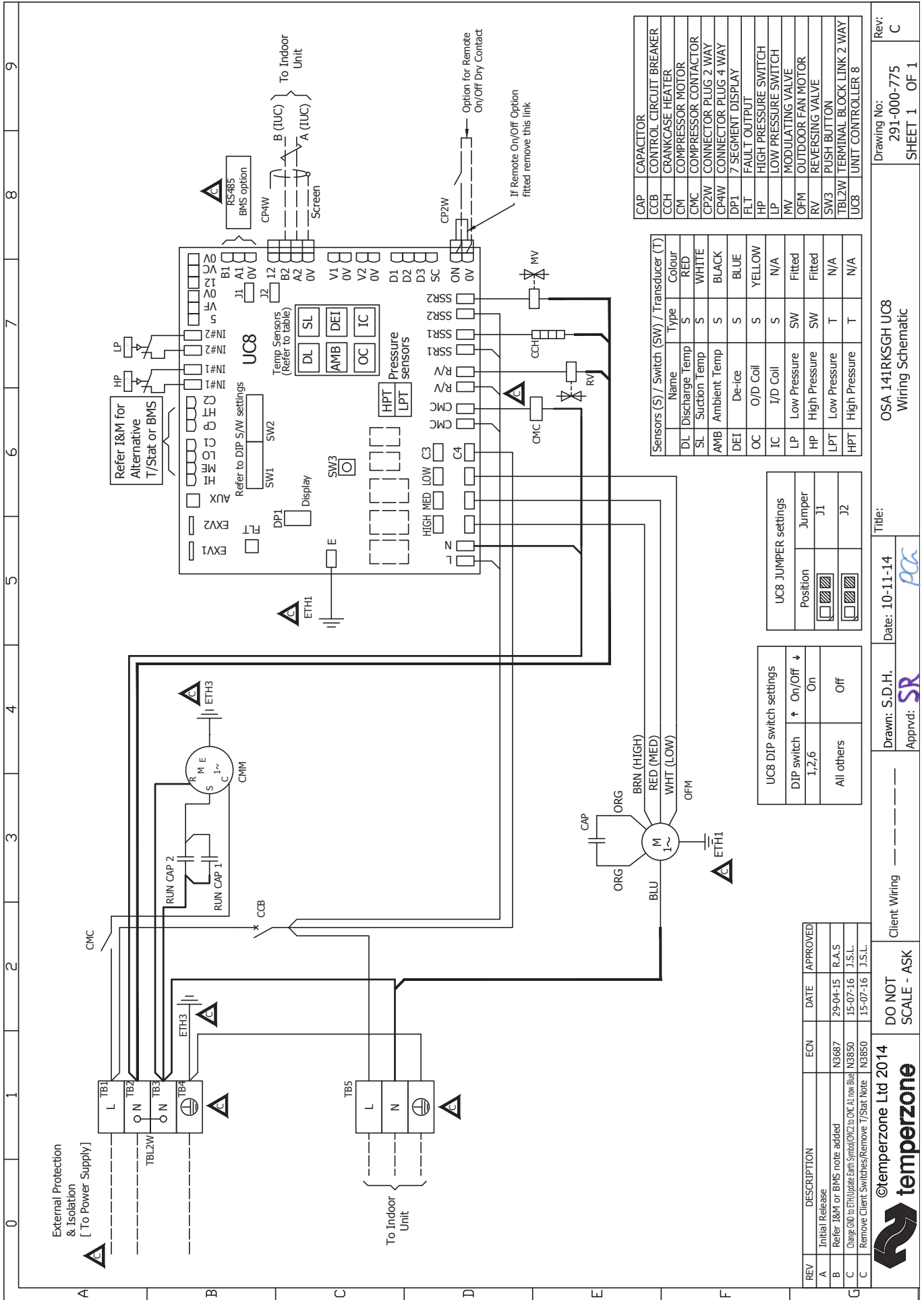
Title: ISU 141KX
 Wiring Schematic

Drawing No: 291-000-958
 SHEET 1 OF 1

Rev: C

OUTDOOR UNIT WIRING

Indoor-Outdoor Connection Wiring: refer 'Installation & Maintenance' pamphlet, page 6.



CAP	CAPACITOR
CCB	CONTROL CIRCUIT BREAKER
CCH	CRANKCASE HEATER
CM	COMPRESSOR MOTOR
COC	COMPRESSOR CONTACTOR
CP2W	CONNECTOR PLUG 2 WAY
CP4W	CONNECTOR PLUG 4 WAY
DP1	7 SEGMENT DISPLAY
FLT	FAULT OUTPUT
HP	HIGH PRESSURE SWITCH
LP	LOW PRESSURE SWITCH
MV	MODULATING VALVE
OFM	OUTDOOR FAN MOTOR
RV	REVERSING VALVE
SW3	PUSH BUTTON
TBL2W	TERMINAL BLOCK LINK 2 WAY
UC8	UNIT CONTROLLER 8

Sensors (S) / Switch (SW) / Transducer (T)	Name	Type	Colour	(T)
DL	Discharge Temp	S	RED	
SL	Suction Temp	S	WHITE	
AMB	Ambient Temp	S	BLACK	
DEI	De-ice	S	BLUE	
OC	O/D Coil	S	YELLOW	
IC	I/D Coil	S	N/A	
LP	Low Pressure	SW	Fitted	
HP	High Pressure	SW	Fitted	
LPT	Low Pressure	T	N/A	
HPT	High Pressure	T	N/A	

UC8 DIP switch settings	
DIP switch 1,2,6	On/Off ↓ On
All others	Off

UC8 JUMPER settings	
Position	Jumper
J1	
J2	

Rev: C
Drawing No: 291-000-775
SHEET 1 OF 1

OSA 141RKS GH UC8
Wiring Schematic

Title: Client Wiring
Date: 10-11-14
Drawn: S.D.H.
Apprvd: SR

DO NOT SCALE - ASK

©temperzone Ltd 2014

REV	DESCRIPTION	ECN	DATE	APPROVED
A	Initial Release			
B	Refer I&M or BMS note added	N3687	29-04-15	R.A.S
C	Change GND to ETH/Update Earth Symbol (012 to OK, At now Blue)	N3850	15-07-16	J.S.L.
C	Remove Client Switches/Remove T/Stat Note	N3850	15-07-16	J.S.L.