

SPECIFICATIONS



Model	HWP 192RKY
Item No. (Standard / Opposite Hand)	510-192-001 / 510-192-011
Cooling capacity (net) to AS/NZS 3823 T1	19.9 kW
Heating capacity H1	18.6 kW
Electrical input - cooling	4.5 kW
Electrical input - heating	4.3 kW
EER / AEER (cooling)	4.44 / 4.42
COP / ACOP (heating)	4.32 / 4.30
Unit Controller	UC8
Refrigerant	R410A
Refrigerant charge	2.7 kg
Compressor type	scroll
Water connections	1" male BSP
Nominal EWT/EAT on cooling	30°C / 27°C db, 19°C wb
Nominal EWT/EAT on heating	20°C / 20°C
Nominal Water Flow @ EWT – LWT = 5k	1.26 l/s
Entering system pressure drop @ nominal flow	34 kPa (5 psi)
Min. water temp. Heat cycle at nominal flow & EAT	10°C
Min. water temp. Cool cycle at nominal flow & EAT	15°C
Min. water temp. Cool cycle with water regulating valve	5°C
Max. EWT Heat cycle at nominal flow & EAT	30°C
Max. EWT Cool cycle at nominal flow & EAT	50°C
Min. water flow @ nominal EWT & EAT	0.35 l/s
Max. water pressure – excluding hoses	3200 kPa (464psi)
Power supply	3 ph. 400V ac 50Hz
Compressor run amps at rating cond.	7 A/ph.
Indoor fan motor size	900 W (EC)
Indoor fan motor (1ph.) - full load	5.1 A
Control circuit breaker (internal)	10 A
Running amps (total system)	10 / 7 / 7 A
Max. running amps (total system)	14.3 / 10.8 / 10.8 A
Net weight	184 kg

Accessories:

Spring mounts	supplied
Water hoses 800mm long, rated 2070 kPa (300 psi)	1" female BSP, supplied
Replacement filter - rated EU2/G2	119-000-103 1163x405x13
Condensate lift-pump	507-003-010

Optional:

SAT-3 Room temperature controller	201-000-146
TZT-100 Room temperature controller	201-000-350

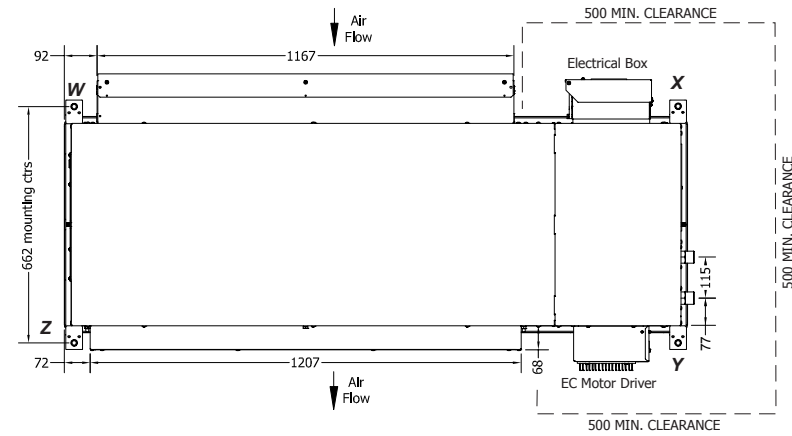
Refer to temperzone for other options, eg remote sensors

DIMENSIONS (mm)



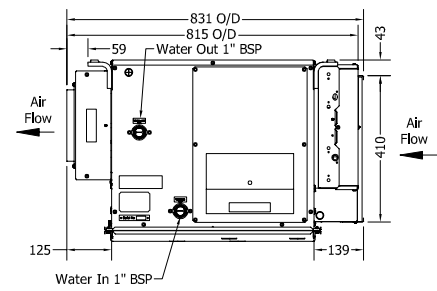
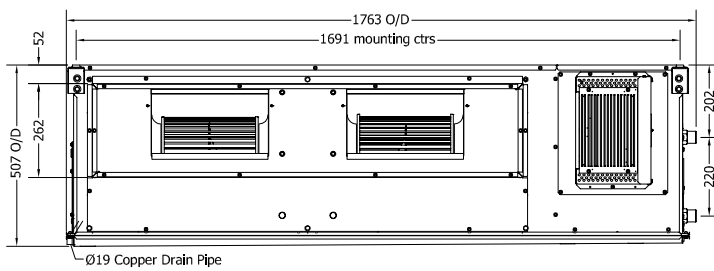
Not to Scale

HWP 192RKTY Standard



POINT LOADS (kg)			
W	X	Y	Z
34	65	52	33

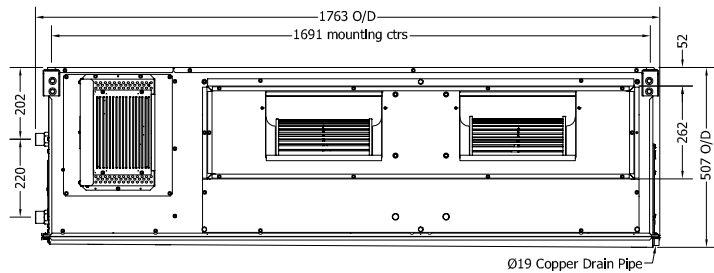
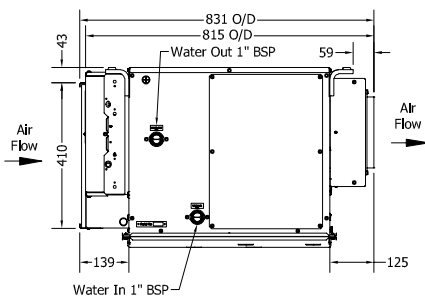
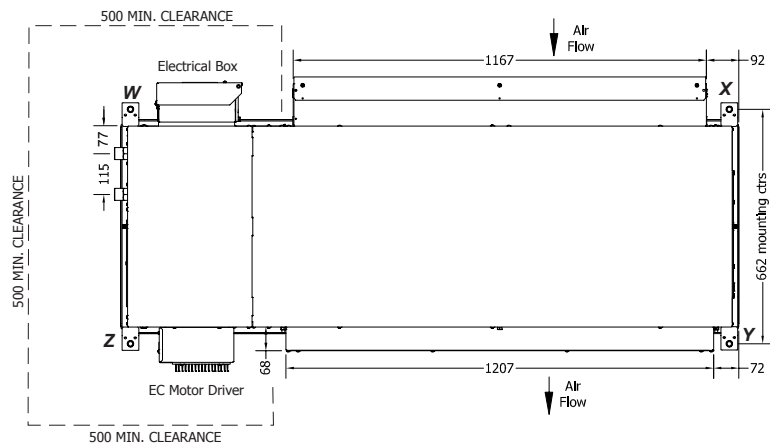
Note: Fan motor can be accessed from panel above, below or sides; no more than two panels at once.



HWP 192RKTY Opposite Hand

POINT LOADS (kg)			
W	X	Y	Z
52	34	33	65

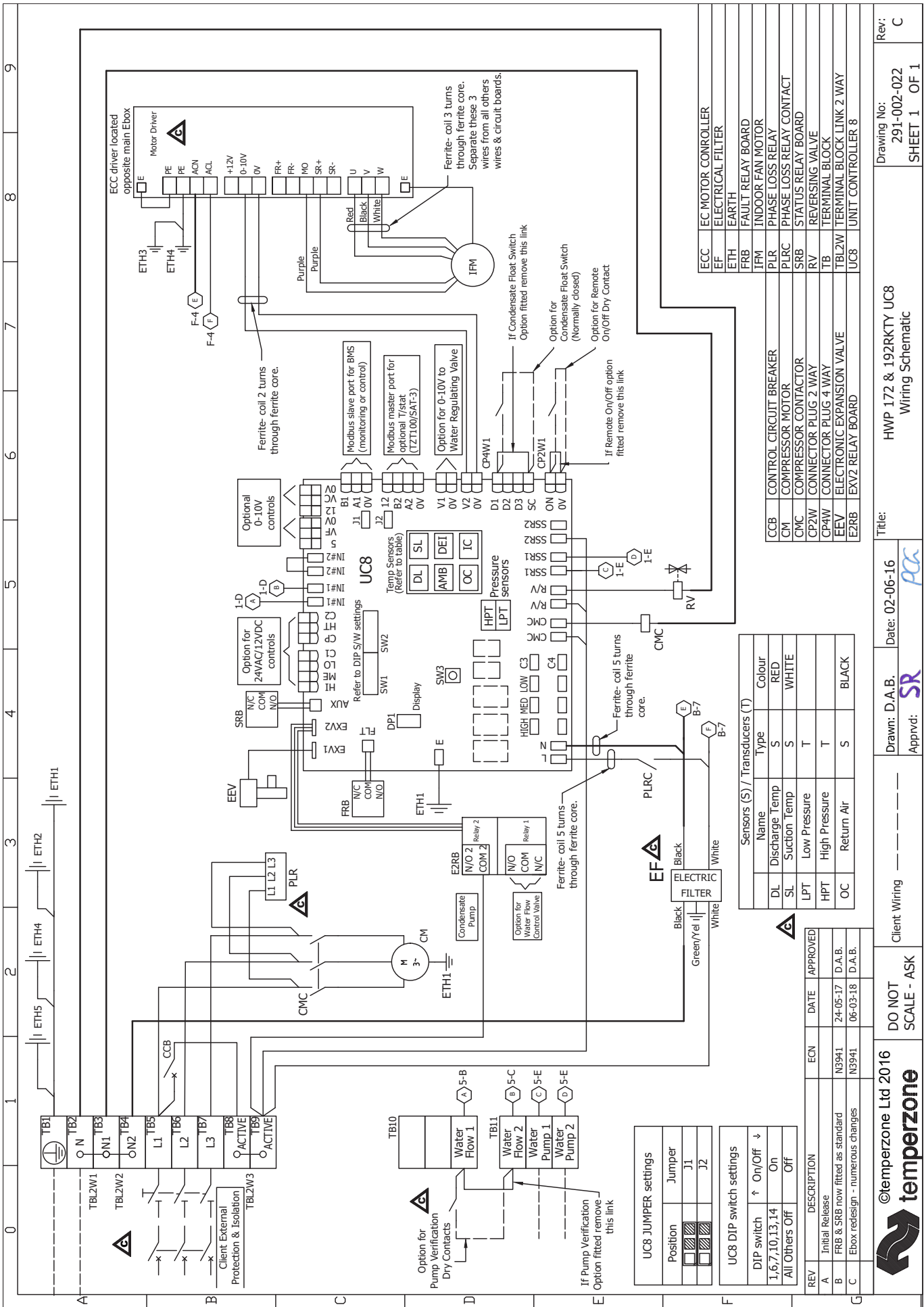
Note: Fan motor can be accessed from panel above, below or sides; no more than two panels at once.



NOTE

Specifications are subject to change without notice due to the manufacturer's ongoing research and development programme.





ECC	EC MOTOR CONTROLLER
EF	ELECTRICAL FILTER
ETH	EARTH
FRB	FAULT RELAY BOARD
IFM	INDOOR FAN MOTOR
PLR	PHASE LOSS RELAY
PLRC	PHASE LOSS RELAY CONTACT
SRB	STATUS RELAY BOARD
RV	REVERSING VALVE
TB	TERMINAL BLOCK
TBL2W	TERMINAL BLOCK LINK 2 WAY
UC8	UNIT CONTROLLER 8

CCB	CONTROL CIRCUIT BREAKER
CM	COMPRESSOR MOTOR
CMC	COMPRESSOR CONTACTOR
CP2W	CONNECTOR PLUG 2 WAY
CP4W	CONNECTOR PLUG 4 WAY
E2RB	ELECTRONIC EXPANSION VALVE
EXV2	EXV2 RELAY BOARD

Sensors (S) / Transducers (T)	Name	Type	Colour
DL	Discharge Temp	S	RED
SL	Suction Temp	S	WHITE
LPT	Low Pressure	T	
HPT	High Pressure	T	
OC	Return Air	S	BLACK

REV	DESCRIPTION	ECN	DATE	APPROVED
A	Initial Release			
B	FRB & SRB now fitted as standard	N3941	24-05-17	D.A.B.
C	Ebox redesign - numerous changes	N3941	06-03-18	D.A.B.

UC8 JUMPER settings	
Position	Jumper
<input type="checkbox"/>	J1
<input type="checkbox"/>	J2

UC8 DIP switch settings	
DIP switch	On/Off ↓
1,6,7,10,13,14	On
All Others	Off

temperzone
 ©temperzone Ltd 2016
 DO NOT SCALE - ASK
 Client Wiring
 Drawn: D.A.B. Date: 02-06-16
 Approved: **SR**
 Title: HWP 172 & 192RKTU UC8 Wiring Schematic
 Drawing No: 291-002-022
 SHEET 1 OF 1
 Rev: C

Model	HWP 192CEKTY
Item No. (Standard / Opposite Hand)	510-192-102 / 510-192-112
Cooling capacity (net) to AS/NZS 3823 T1	19.9 kW
Heating capacity - Electric heat	9.0 kW
Electrical input - cooling	4.5 kW
Electrical input - heating	9.9 kW
EER / AEER (cooling)	4.44 / 4.42
Unit Controller	UC8
Refrigerant	R410A
Refrigerant charge	2.7 kg
Compressor type	scroll
Water connections	1" male BSP
Nominal EWT on cooling	30°C
Nominal EAT on cooling	27°C db, 19°C wb
Nominal Water Flow @ EWT – LWT = 5k	1.26 l/s
Entering system pressure drop @ nominal flow	34 kPa (5 psi)
Min. water temp. Cool cycle at nominal flow & EAT	15°C
Min. water temp. Cool cycle with water regulating valve	5°C
Max. EWT Cool cycle at nominal flow & EAT	50°C
Min. water flow @ nominal EWT & EAT	0.35 l/s
Max. water pressure – excluding hoses	3200 kPa (464 psi)
Power supply	3 ph. 400V ac 50Hz
Compressor (3ph.) run amps at rating cond.	7 A/ph.
Indoor fan motor size	900 W (EC)
Indoor fan motor (1ph.) - full load	5.1 A
Control circuit breaker (internal)	10 A
Running amps (total system)	16.9 / 13 / 13 A
Max. running amps (total system)	18.2 / 13 / 13 A
Net weight	184 kg

Accessories:

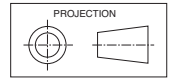
Spring mounts	supplied
Water hoses 800mm long, rated 2070 kPa (300 psi)	1" female BSP, supplied
Replacement filter - rated EU2/G2	119-000-103 1163x405x13
Condensate lift-pump	507-003-010

Optional:

SAT-3 Room temperature controller	201-000-146
TZT-100 Room temperature controller	201-000-350

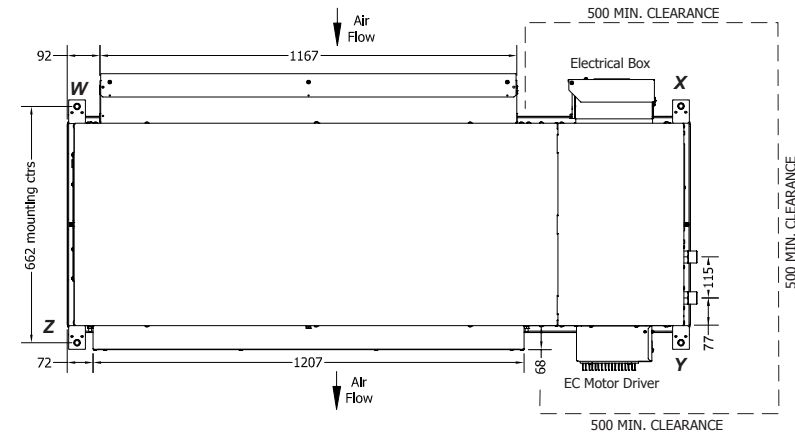
Refer to temperzone for other options, eg remote sensors

DIMENSIONS (mm)



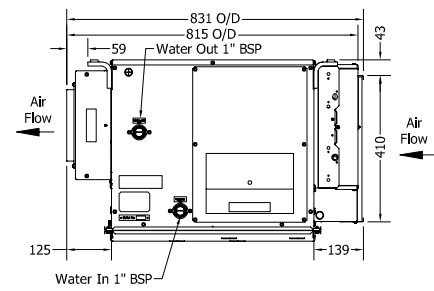
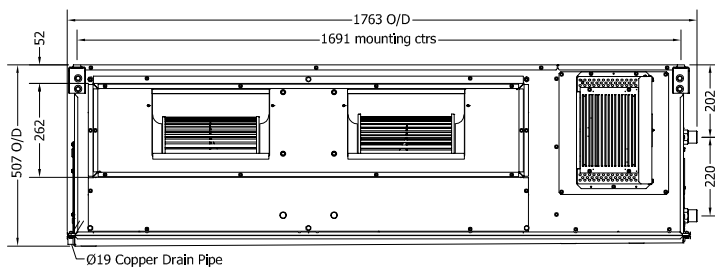
Not to Scale

HWP 192CEKTY Standard



POINT LOADS (kg)			
W	X	Y	Z
34	65	52	33

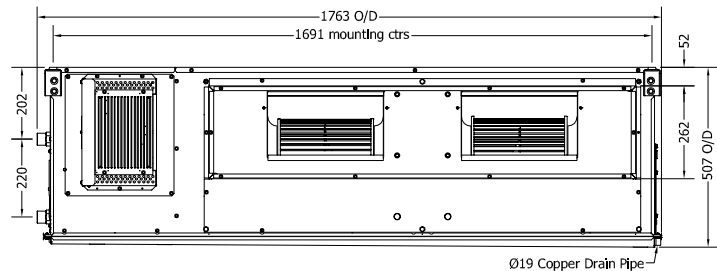
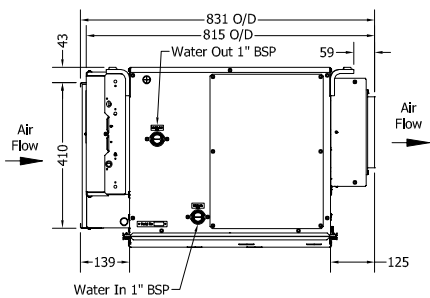
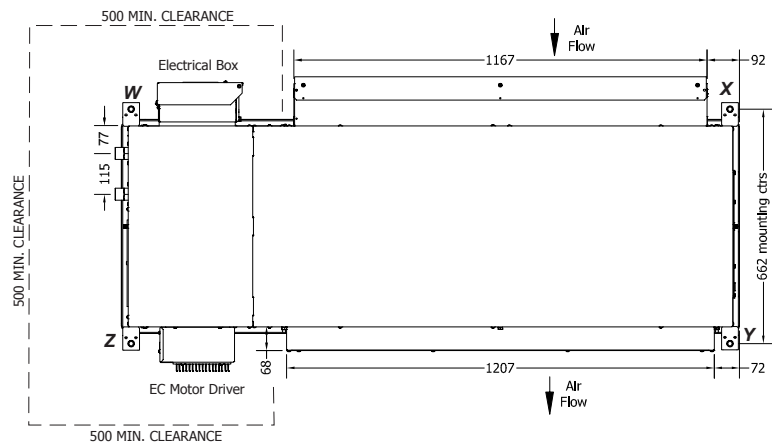
Note: Fan motor can be accessed from panel above, below or sides; no more than two panels at once.



HWP 192CEKTY Opposite Hand

POINT LOADS (kg)			
W	X	Y	Z
52	34	33	65

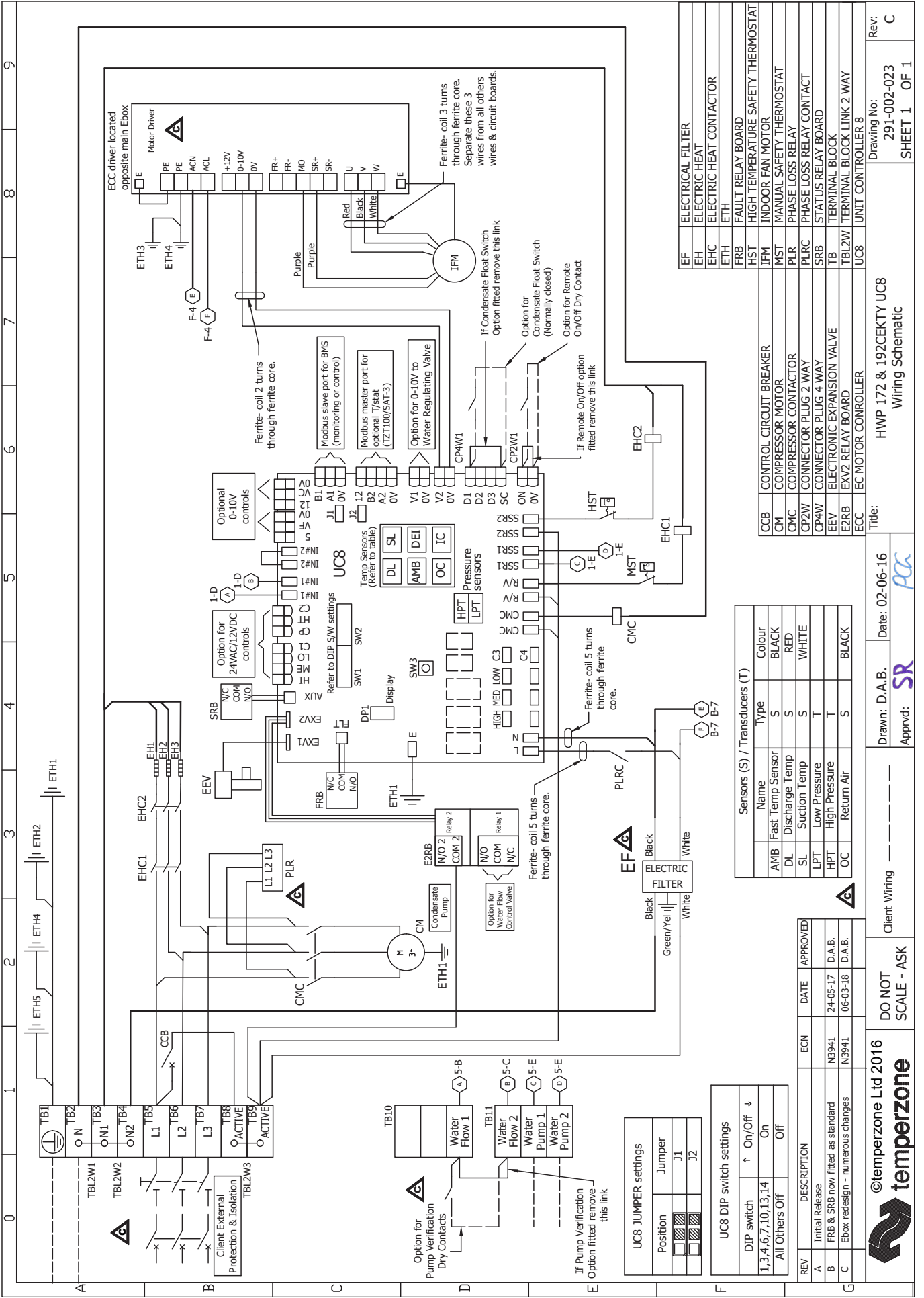
Note: Fan motor can be accessed from panel above, below or sides; no more than two panels at once.



NOTE

Specifications are subject to change without notice due to the manufacturer's ongoing research and development programme.







EF	ELECTRICAL FILTER
EH	ELECTRIC HEAT
EHC	ELECTRIC HEAT CONTACTOR
ETH	ETH
FRB	FAULT RELAY BOARD
HST	HIGH TEMPERATURE SAFETY THERMOSTAT
IFM	INDOOR FAN MOTOR
MST	MANUAL SAFETY THERMOSTAT
PLR	PHASE LOSS RELAY
PLRC	PHASE LOSS RELAY CONTACT
SRB	STATUS RELAY BOARD
TB	TERMINAL BLOCK
TBL2/W	TERMINAL BLOCK LINK 2 WAY
UC8	UNIT CONTROLLER 8

Sensors (S) / Transducers (T)		
Name	Type	Colour
AMB	Fast Temp Sensor	BLACK
DL	Discharge Temp	RED
SL	Suction Temp	WHITE
LPT	Low Pressure	T
HPT	High Pressure	T
OC	Return Air	BLACK

REV	DESCRIPTION	ECN	DATE	APPROVED
A	Initial Release	N3941	24-05-17	D.A.B.
B	FRB & SRB now fitted as standard	N3941	06-03-18	D.A.B.
C	Ebox redesign - numerous changes	N3941	06-03-18	D.A.B.

UC8 JUMPER settings	
Position	Jumper
<input type="checkbox"/>	J1
<input type="checkbox"/>	J2

UC8 DIP switch settings	
DIP switch	On/Off
1,3,4,6,7,10,13,14	On
All Others Off	Off


temperzone Ltd 2016
 DO NOT SCALE - ASK
 Client Wiring
 Drawn: D.A.B. Date: 02-06-16
 Approved: 
 Title: HWP 172 & 192CEKTY UC8 Wiring Schematic
 Drawing No: 291-002-023
 SHEET 1 OF 1
 Rev: C

