

SPECIFICATIONS



Model	HWP 172RKY
Item No. (Standard / Opposite Hand)	510-172-001 / 510-172-011
Cooling capacity (net) to AS/NZS 3823 T1	17.4 kW
Heating capacity H1	16.7 kW
Electrical input - cooling	4.0 kW
Electrical input - heating	3.9 kW
EER / AEER (cooling)	4.35 / 4.32
COP / ACOP (heating)	4.28 / 4.25
Unit Controller	UC8
Refrigerant	R410A
Refrigerant charge	2.0 kg
Compressor type	scroll
Water connections	1" male BSP
Nominal EWT/EAT on cooling	30°C / 27°C db, 19°C wb
Nominal EWT/EAT on heating	20°C / 20°C
Nominal Water Flow @ EWT – LWT = 5k	1.06 l/s
Entering system pressure drop @ nominal flow	83 kPa (12 psi)
Min. water temp. Heat cycle at nominal flow & EAT	10°C
Min. water temp. Cool cycle at nominal flow & EAT	15°C
Min. water temp. Cool cycle with water regulating valve	5°C
Max. EWT Heat cycle at nominal flow & EAT	30°C
Max. EWT Cool cycle at nominal flow & EAT	50°C
Min. water flow @ nominal EWT & EAT	0.30 l/s
Max. water pressure – excluding hoses	3200 kPa (464 psi)
Power supply	3 ph. 400V ac 50Hz
Compressor (3ph.) run amps at rating cond.	6 A/ph.
Indoor fan motor size	900 W (EC)
Indoor fan motor (1ph.) - full load	5.3 A
Control circuit breaker (internal)	10 A
Running amps (total system)	7.6 / 6 / 6 A
Max. running amps (total system)	13.7 / 8.8 / 8.8 A
Net weight	160 kg

Accessories:

Spring mounts	supplied
Water hoses 800mm long, rated 2070 kPa (300 psi)	1" female BSP, supplied
Replacement filter - rated EU2/G2	119-000-100 963x405x13
Condensate lift-pump	507-003-010

Optional:

SAT-3 Room temperature controller	201-000-146
TZT-100 Room temperature controller	201-000-350

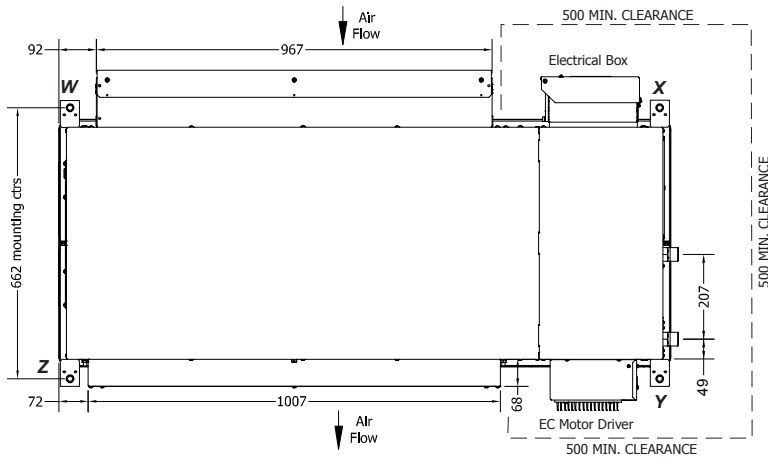
Refer to temperzone for other options, eg remote sensors

DIMENSIONS (mm)



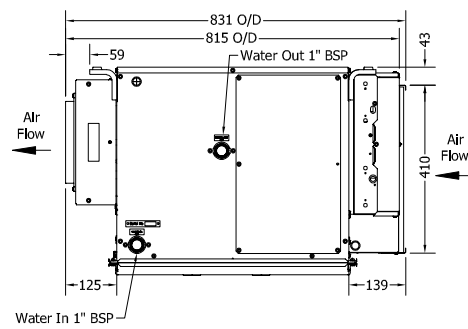
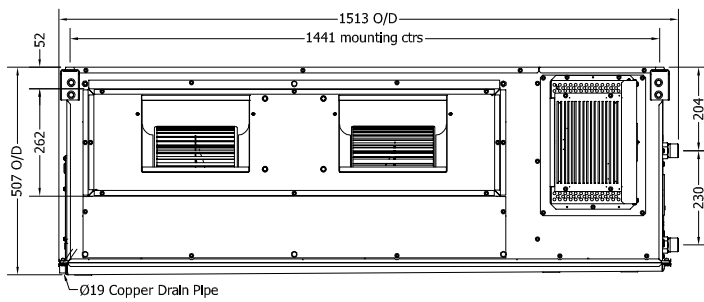
Not to Scale

HWP 172RKTY Standard



POINT LOADS (kg)			
W	X	Y	Z
27	54	48	32

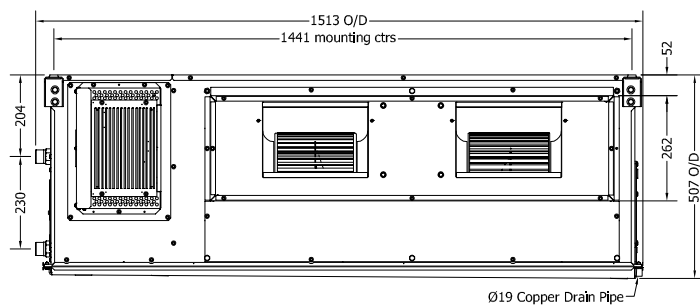
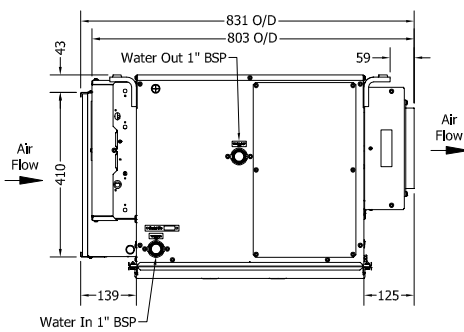
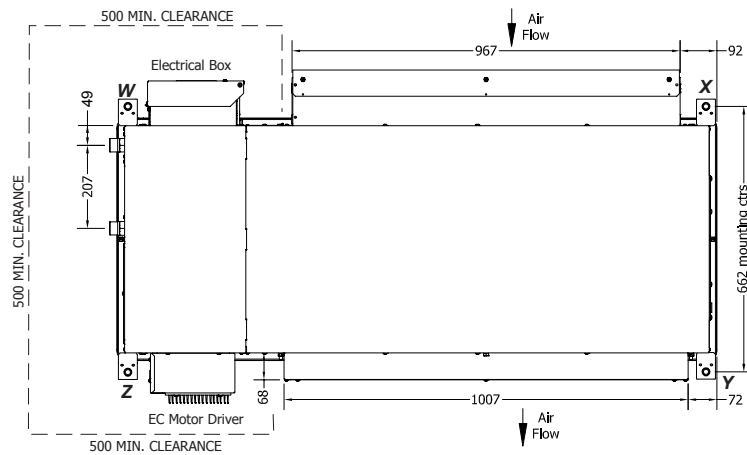
Note: Fan motor can be accessed from panel above, below or sides; no more than two panels at once.



HWP 172RKTY Opposite Hand

POINT LOADS (kg)			
W	X	Y	Z
48	27	32	54

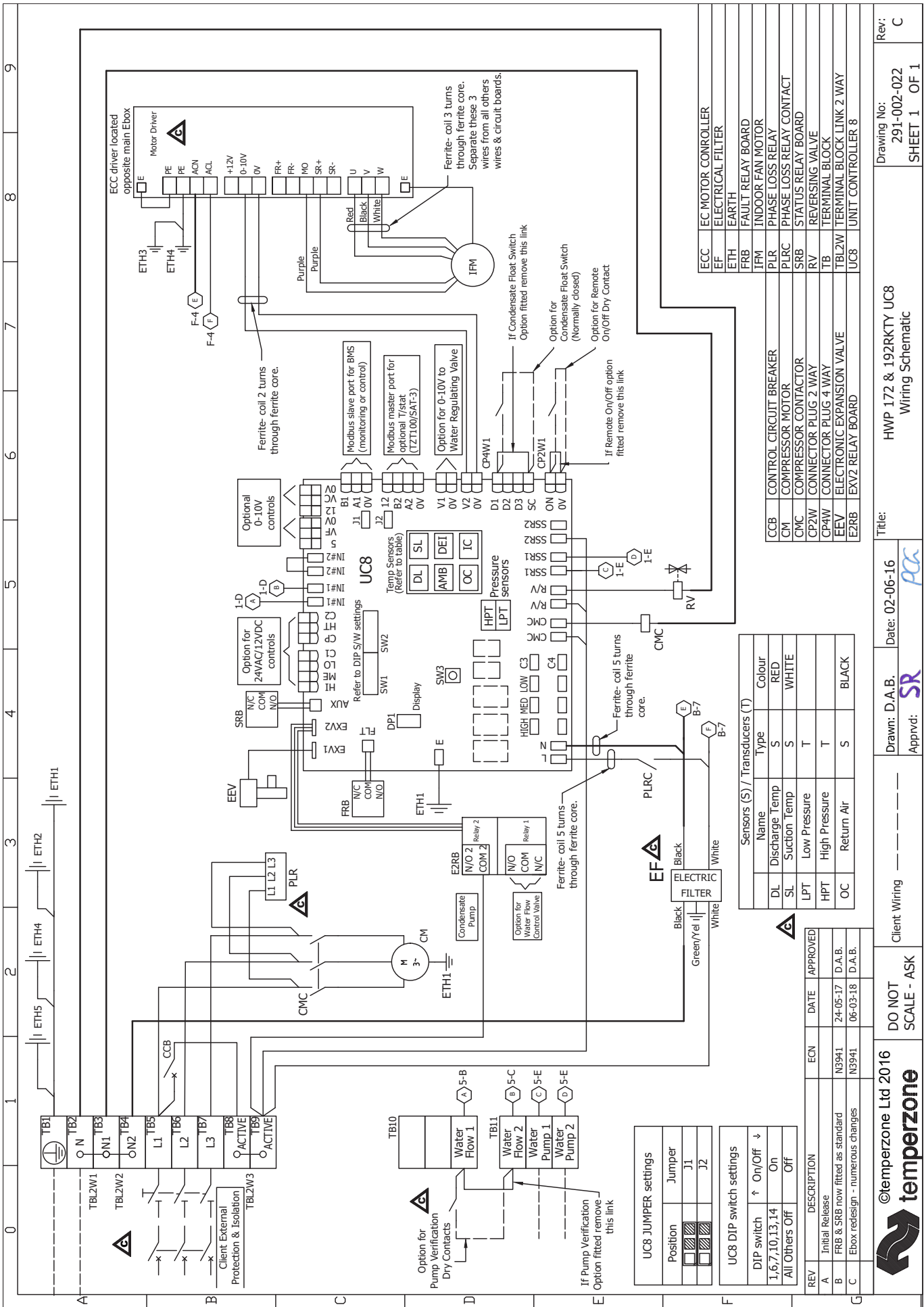
Note: Fan motor can be accessed from panel above, below or sides; no more than two panels at once.



NOTE

Specifications are subject to change without notice due to the manufacturer's ongoing research and development programme.





ECC	EC MOTOR CONTROLLER
EF	ELECTRICAL FILTER
ETH	EARTH
FRB	FAULT RELAY BOARD
IFM	INDOOR FAN MOTOR
PLR	PHASE LOSS RELAY
PLRC	PHASE LOSS RELAY CONTACT
SRB	STATUS RELAY BOARD
RV	REVERSING VALVE
TB	TERMINAL BLOCK
TBL2W	TERMINAL BLOCK LINK 2 WAY
UC8	UNIT CONTROLLER 8

CCB	CONTROL CIRCUIT BREAKER
CM	COMPRESSOR MOTOR
CMC	COMPRESSOR CONTACTOR
CP2W	CONNECTOR PLUG 2 WAY
CP4W	CONNECTOR PLUG 4 WAY
E2RB	ELECTRONIC EXPANSION VALVE
EXV2	EXV2 RELAY BOARD

Sensors (S) / Transducers (T)		
Name	Type	Colour
DL	Discharge Temp	RED
SL	Suction Temp	WHITE
LPT	Low Pressure	
HPT	High Pressure	
OC	Return Air	BLACK

UC8 JUMPER settings	
Position	Jumper
J1	
J2	

UC8 DIP switch settings		
DIP switch	On/Off	↓
1,6,7,10,13,14	On	
All Others	Off	

REV	DESCRIPTION	ECN	DATE	APPROVED
A	Initial Release			
B	FRB & SRB now fitted as standard	N3941	24-05-17	D.A.B.
C	Ebox redesign - numerous changes	N3941	06-03-18	D.A.B.

©temperzone Ltd 2016

temperzone

DO NOT SCALE - ASK

Client Wiring

Drawn: D.A.B. Date: 02-06-16

Approved: **SR**

Title: HWP 172 & 192RKTY UC8 Wiring Schematic

Rev: 291-002-022 SHEET 1 OF 1

SPECIFICATIONS



Model	HWP 172CEKTY
Item No. (Standard / Opposite Hand)	510-172-102 / 510-172-112
Cooling capacity (net) to AS/NZS 3823 T1	17.4 kW
Heating capacity - Electric heat	9.0 kW
Electrical input - cooling	4.0 kW
Electrical input - heating	9.5 kW
EER / AEER (cooling)	4.35 / 4.32
Unit Controller	UC8
Refrigerant	R410A
Refrigerant charge	2.0 kg
Compressor type	scroll
Water connections	1" male BSP
Nominal EWT on cooling	30°C
Nominal EAT on cooling	27°C db, 19°C wb
Nominal Water Flow @ EWT – LWT = 5k	1.06 l/s
Entering system pressure drop @ nominal flow	83 kPa (12 psi)
Min. water temp. Cool cycle at nominal flow & EAT	15°C
Min. water temp. Cool cycle with water regulating valve	5°C
Max. EWT Cool cycle at nominal flow & EAT	50°C
Min. water flow @ nominal EWT & EAT	0.30 l/s
Max. water pressure – excluding hoses	3200 kPa (464 psi)
Power supply	3 ph. 400V ac 50Hz
Compressor (3ph.) run amps at rating cond.	6 A/ph.
Indoor fan motor size	900 W (EC)
Indoor fan motor (1ph.) - full load	5.3 A
Control circuit breaker (internal)	10 A
Running amps (total system)	15.3 / 13 / 13 A
Max. running amps (total system)	18.2 / 13 / 13 A
Net weight	160 kg

Accessories:

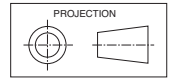
Spring mounts	supplied
Water hoses 800mm long, rated 2070 kPa (300 psi)	1" female BSP, supplied
Replacement filter - rated EU2/G2	119-000-100 963x405x13
Condensate lift-pump	507-003-010

Optional:

SAT-3 Room temperature controller	201-000-146
TZT-100 Room temperature controller	201-000-350

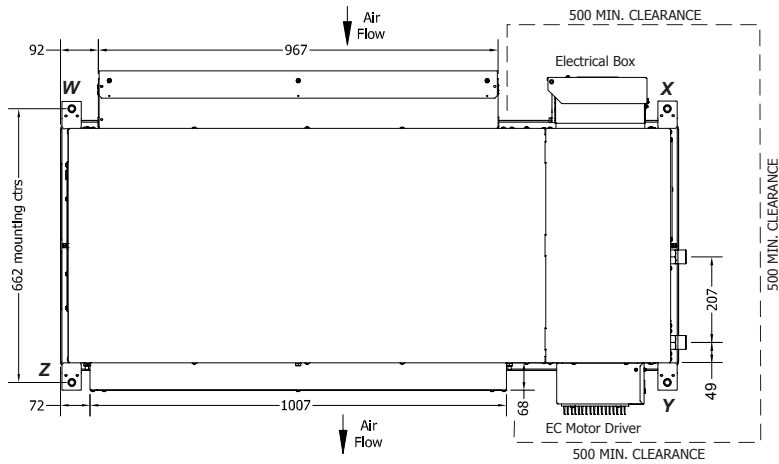
Refer to temperzone for other options, eg remote sensors

DIMENSIONS (mm)



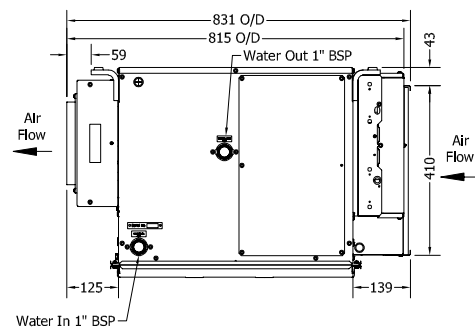
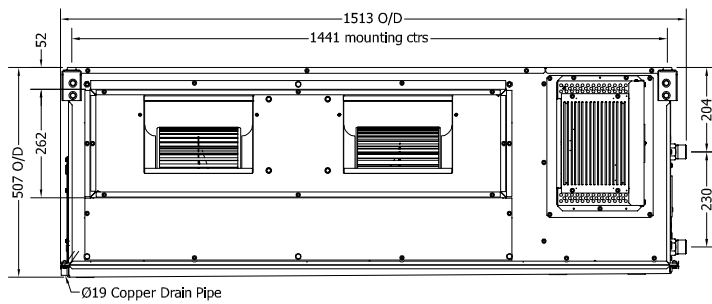
Not to Scale

HWP 172CEKTY Standard



POINT LOADS (kg)			
W	X	Y	Z
27	54	48	32

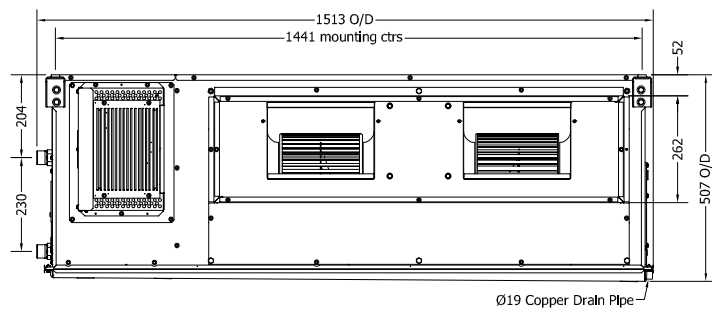
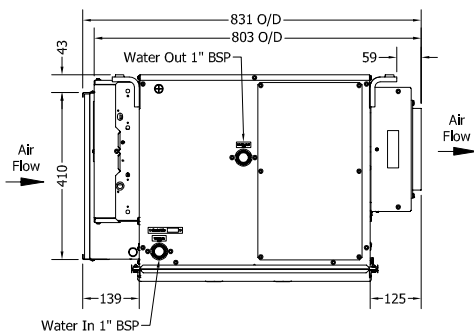
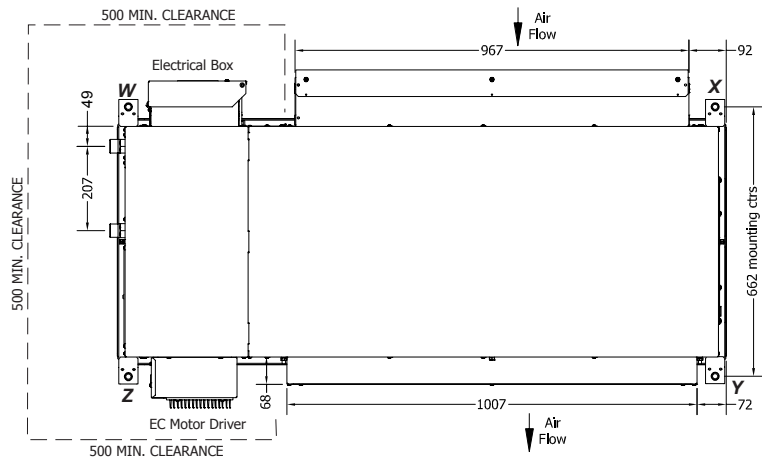
Note: Fan motor can be accessed from panel above, below or sides; no more than two panels at once.



HWP 172CEKTY Opposite Hand

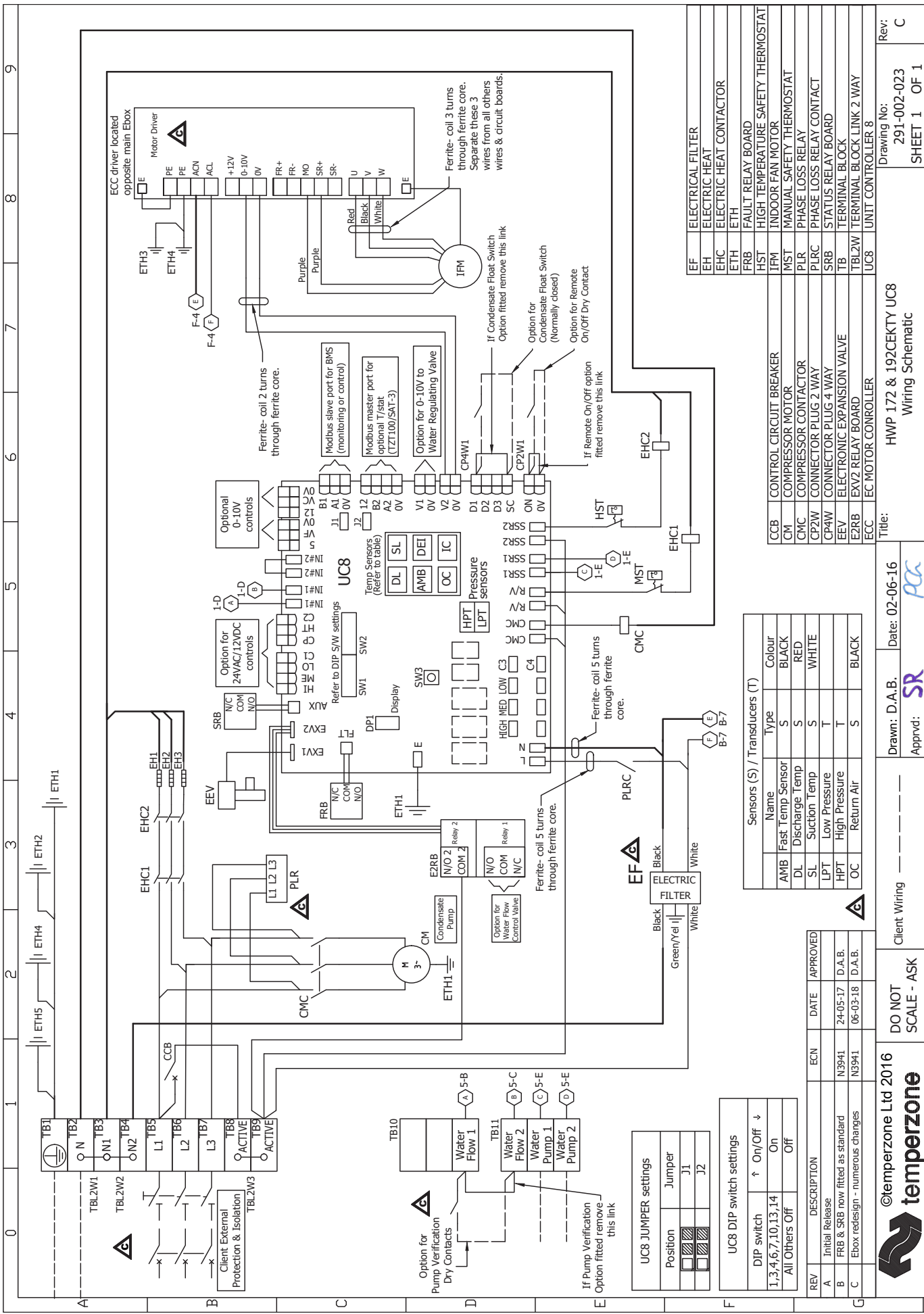
POINT LOADS (kg)			
W	X	Y	Z
48	27	32	54

Note: Fan motor can be accessed from panel above, below or sides; no more than two panels at once.



NOTE

Specifications are subject to change without notice due to the manufacturer's ongoing research and development programme.



EF	ELECTRICAL FILTER
EH	ELECTRIC HEAT
EHC	ELECTRIC HEAT CONTACTOR
ETH	ETH
FRB	FAULT RELAY BOARD
HST	HIGH TEMPERATURE SAFETY THERMOSTAT
IPM	INDOOR FAN MOTOR
MST	MANUAL SAFETY THERMOSTAT
PLR	PHASE LOSS RELAY
PLRC	PHASE LOSS RELAY CONTACT
SRB	STATUS RELAY BOARD
TB	TERMINAL BLOCK
TBL2W	TERMINAL BLOCK LINK 2 WAY
UC8	UNIT CONTROLLER 8

CCB	CONTROL CIRCUIT BREAKER
CM	COMPRESSOR MOTOR
CMC	COMPRESSOR CONTACTOR
CP2W	CONNECTOR PLUG 2 WAY
CP4W	CONNECTOR PLUG 4 WAY
EEV	ELECTRONIC EXPANSION VALVE
E2RB	EXV2 RELAY BOARD
ECC	EC MOTOR CONTROLLER

Sensors (S) / Transducers (T)		
Name	Type	Colour
AMB	Fast Temp Sensor	BLACK
DL	Discharge Temp	RED
SL	Suction Temp	WHITE
LPT	Low Pressure	T
HPT	High Pressure	T
OC	Return Air	BLACK

REV	DESCRIPTION	ECN	DATE	APPROVED
A	Initial Release			
B	FRB & SRB now fitted as standard	N3941	24-05-17	D.A.B.
C	Ebox redesign - numerous changes	N3941	06-03-18	D.A.B.

Client Wiring

DO NOT SCALE - ASK

©temperzone Ltd 2016

temperzone

Client Wiring

Drawn: D.A.B. Date: 02-06-16

Approved: **SR** *PCA*

Title: HWP 172 & 192CKTY UC8 Wiring Schematic

Rev: 291-002-023 SHEET 1 OF 1 C

