

SPECIFICATIONS



Model	OPA 550RKTB
Configuration	Horizontal Supply Air
Item No. (Standard / Opposite Hand)	856-055-901 / 856-055-910
Cooling capacity (net) to AS/NZS 3823 T1	52.0 kW
Heating capacity H1	52.6 kW
Electrical input - cooling	17.8 kW
Electrical input - heating	16.6 kW
EER / AEER (cooling)	2.92 / 2.91
COP / ACOP (heating)	3.17 / 3.15
Unit Controller	UC8 (x2)
Refrigerant	R410A
Refrigerant Charge	10.3 kg/sys.
Compressor oil type	POE 32-3MAF (or equivalent)
Compressor type	fixed scroll (x2)
Power supply	3 ph. 400V ac 50Hz
Compressor (3ph.) run amps at rating cond.	12 A/ph. (x2)
Compressor overload setting	19.2 A (x2)
Compressor circuit breaker	32 A (x2)
Indoor fan motor size	3.0 kW
Indoor fan motor overload setting	7.9 A
Nominal air flow at rating conditions	2500 l/s
Indoor fan motor (3ph.) - full load	7.4 A/ph.
Outdoor fan motor (1ph.) - full load	4.5 A (x2)
Outdoor fan capacitor size	8 μ fd (x2)
Control circuit breaker (internal)	2 A
Auxiliary power outlet (1ph.) overload setting	10 A
Running amps (total system)	25 / 34 / 26 A
Max. running amps (total system)	37 / 45 / 37 A
Net weight	899 kg

Accessories:

Filters - rated EU4/G4 disposable	019-400-010 450x600x50 (x2) 019-400-007 600x600x50 (x2)
-----------------------------------	--

Optional Controls:

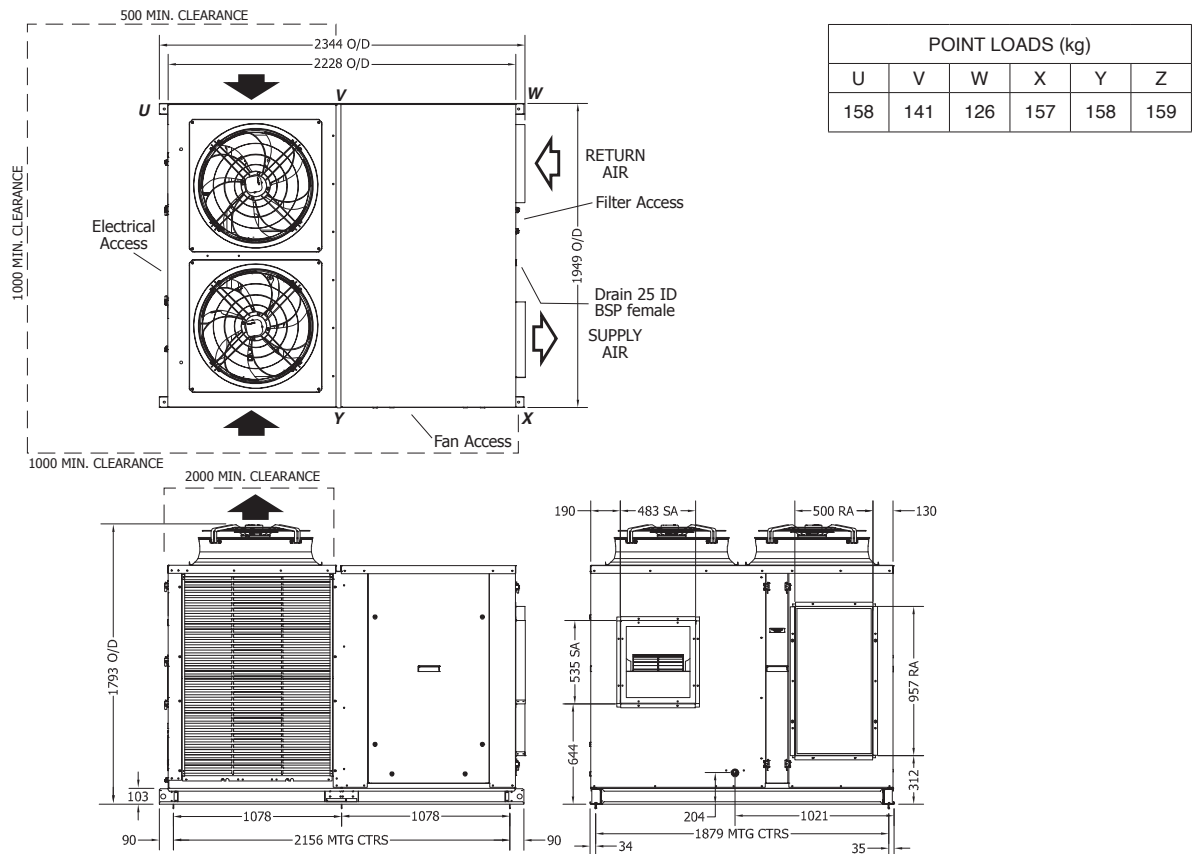
TZT-100 Room temperature controller	201-000-350
-------------------------------------	-------------

Refer to temperzone for other options.

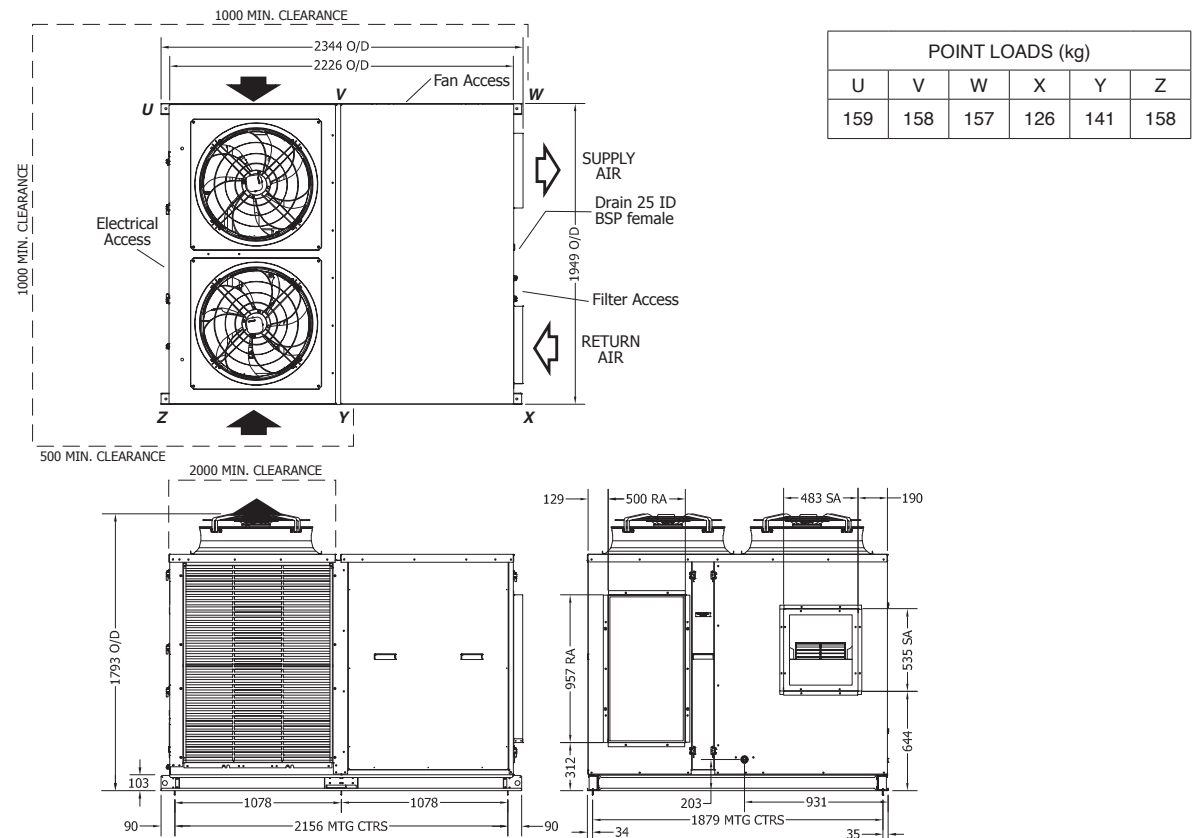


Not to Scale

OPA 550RKTB01 Standard Hand

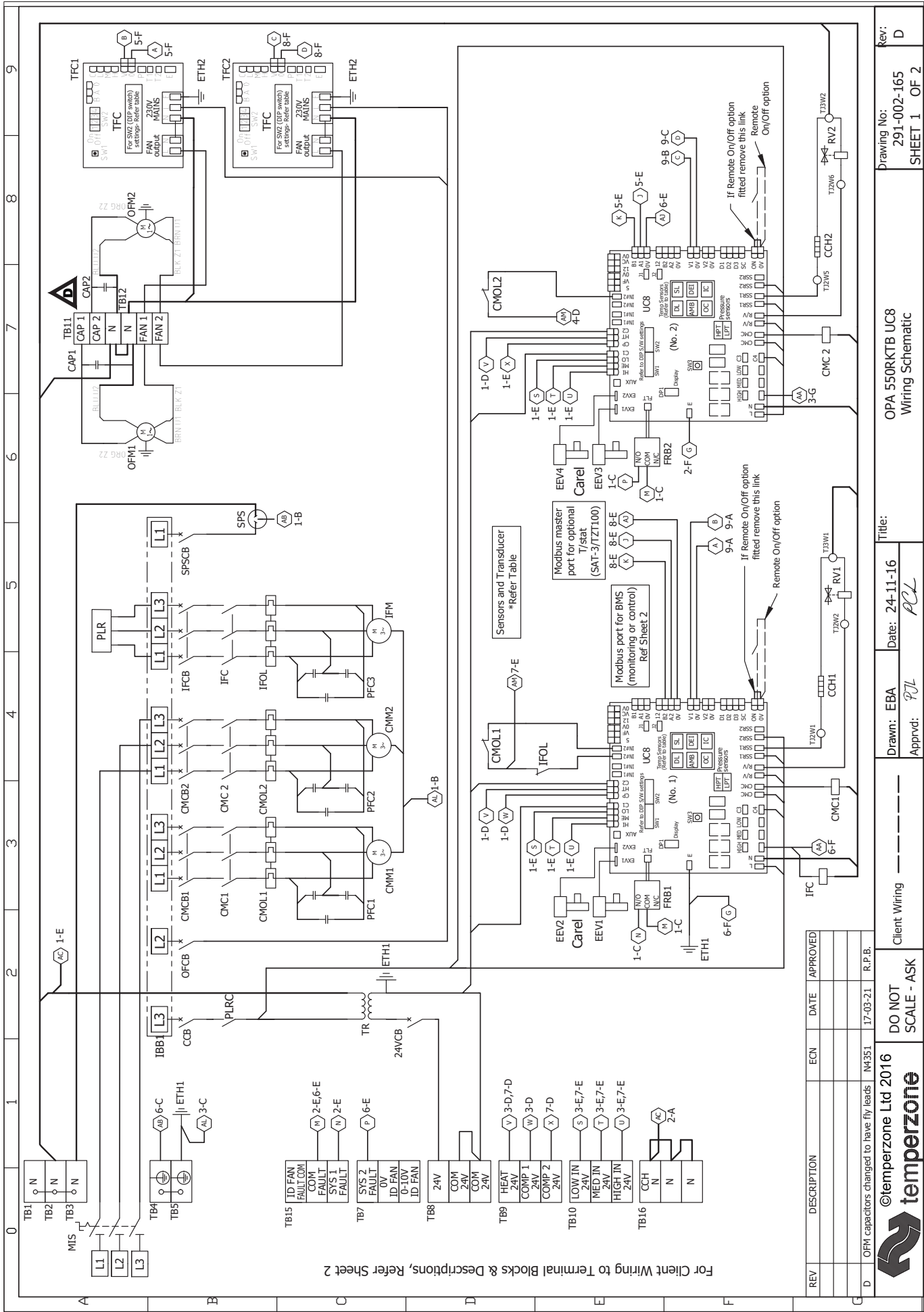


OPA 550RKTB10 Opposite Hand



NOTE

Specifications are subject to change without notice due to the manufacturer's ongoing research and development programme.



For Client Wiring to Terminal Blocks & Descriptions, Refer Sheet 2

REV	DESCRIPTION	ECN	DATE	APPROVED
D	OPA 550RKTB UC8 Wiring Schematic	N4351	17-03-21	R.P.B.

DO NOT SCALE - ASK

©temperzone Ltd 2016



Client Wiring

Drawn: EBA
 Date: 24-11-16
 PCL

Approved: P/L

Title: OPA 550RKTB UC8 Wiring Schematic

Drawing No: 291-002-165
 SHEET 1 OF 2

Rev: D

0	1	2	3	4	5	6	7	8	9																																																																									
A	<p>Important Notes:</p> <p>1) Crankcase Heater Note 24 Hour power required for control circuit and crankcase heaters</p>		<p>3) Master-slave note When the unit is controlled with a TZT-100 or SAT-3 wall thermostat then the two UC8 controllers must be linked and configured as master and slave. Master DIP switch settings: 11 OFF 12 OFF Slave DIP switch settings: 11 ON 12 OFF</p>		<table border="1" style="width:100%; border-collapse: collapse;"> <thead> <tr> <th colspan="3">Sensors (S) / Transducers (T)</th> </tr> <tr> <th>Name</th> <th>Type</th> <th>Colour</th> </tr> </thead> <tbody> <tr> <td>DL</td> <td>Discharge Temp</td> <td>S</td> <td>RED</td> </tr> <tr> <td>SL</td> <td>Suction Temp</td> <td>S</td> <td>WHITE</td> </tr> <tr> <td>AMB</td> <td>Ambient Temp</td> <td>S</td> <td>BLACK</td> </tr> <tr> <td>DEI</td> <td>De-ice Temp</td> <td>S</td> <td>BLUE</td> </tr> <tr> <td>LPT</td> <td>Suction Pressure</td> <td>T</td> <td></td> </tr> <tr> <td>HPT</td> <td>High Pressure</td> <td>T</td> <td></td> </tr> </tbody> </table>		Sensors (S) / Transducers (T)			Name	Type	Colour	DL	Discharge Temp	S	RED	SL	Suction Temp	S	WHITE	AMB	Ambient Temp	S	BLACK	DEI	De-ice Temp	S	BLUE	LPT	Suction Pressure	T		HPT	High Pressure	T		<p>Client Wiring</p>		<p>BMS Control</p>																																											
Sensors (S) / Transducers (T)																																																																																		
Name	Type	Colour																																																																																
DL	Discharge Temp	S	RED																																																																															
SL	Suction Temp	S	WHITE																																																																															
AMB	Ambient Temp	S	BLACK																																																																															
DEI	De-ice Temp	S	BLUE																																																																															
LPT	Suction Pressure	T																																																																																
HPT	High Pressure	T																																																																																
B	<p>2) SAT-3 & TZT 100 Note To connect TZT100 to unit use 2 pair twisted cable - screen grounded. (F/UTP 24G (0.2mm²) or thicker recommended)</p>		<table border="1" style="width:100%; border-collapse: collapse;"> <thead> <tr> <th colspan="3">SAT-3 & TZT100 connection to UC8 terminals</th> </tr> <tr> <th>UC8 terminals(No.1)</th> <th>SAT-3</th> <th>TZT100 Terminals</th> </tr> </thead> <tbody> <tr> <td>12</td> <td>12V</td> <td>24</td> </tr> <tr> <td>B2</td> <td>B</td> <td>B</td> </tr> <tr> <td>A2</td> <td>A</td> <td>A</td> </tr> <tr> <td>0V</td> <td>GND</td> <td>24C</td> </tr> <tr> <td>Screen to 0V</td> <td></td> <td></td> </tr> </tbody> </table>		SAT-3 & TZT100 connection to UC8 terminals			UC8 terminals(No.1)	SAT-3	TZT100 Terminals	12	12V	24	B2	B	B	A2	A	A	0V	GND	24C	Screen to 0V			<p>Remote option</p>																																																								
SAT-3 & TZT100 connection to UC8 terminals																																																																																		
UC8 terminals(No.1)	SAT-3	TZT100 Terminals																																																																																
12	12V	24																																																																																
B2	B	B																																																																																
A2	A	A																																																																																
0V	GND	24C																																																																																
Screen to 0V																																																																																		
C	<table border="1" style="width:100%; border-collapse: collapse;"> <tbody> <tr><td>24VCB</td><td>24 VOLT CIRCUIT BREAKER</td></tr> <tr><td>CAP</td><td>CAPACITOR</td></tr> <tr><td>CCB</td><td>CONTROL CIRCUIT BREAKER</td></tr> <tr><td>CCH</td><td>CRANKCASE HEATER</td></tr> <tr><td>CMC</td><td>COMPRESSOR CONTACTOR</td></tr> <tr><td>CMCB</td><td>COMPRESSOR CIRCUIT BREAKER</td></tr> <tr><td>CMIM</td><td>COMPRESSOR MOTOR</td></tr> <tr><td>CMOL</td><td>COMPRESSOR OVERLOAD</td></tr> <tr><td>EEV</td><td>ELECTRONIC EXPANSION VALVE</td></tr> <tr><td>ETH</td><td>EARTH</td></tr> <tr><td>FRB</td><td>FAULT RELAY BOARD</td></tr> <tr><td>JEC</td><td>INDOOR FAN CONTACTOR</td></tr> <tr><td>JFCB</td><td>INDOOR FAN CIRCUIT BREAKER</td></tr> <tr><td>JFM</td><td>INDOOR FAN MOTOR</td></tr> <tr><td>JFO</td><td>INDOOR FAN OVERLOAD</td></tr> <tr><td>JFB</td><td>INSULATED BUS BAR</td></tr> <tr><td>MIS</td><td>MAIN ISOLATOR SWITCH</td></tr> <tr><td>OIECB</td><td>OUTDOOR FAN CIRCUIT BREAKER</td></tr> <tr><td>OEM</td><td>OUTDOOR FAN MOTOR</td></tr> <tr><td>PEC</td><td>POWER FACTOR CORRECTION</td></tr> <tr><td>PLRC</td><td>PHASE LOSS RELAY CONTACT</td></tr> <tr><td>PLR</td><td>PHASE LOSS RELAY</td></tr> <tr><td>RV</td><td>REVERSING VALVE</td></tr> <tr><td>SPS</td><td>SINGLE PHASE SOCKET</td></tr> <tr><td>SPSCB</td><td>SINGLE PHASE SOCKET CIRCUIT BREAKER</td></tr> <tr><td>TB</td><td>TERMINAL BLOCK</td></tr> <tr><td>TFC</td><td>TRIAC FAN CONTROLLER</td></tr> <tr><td>TJ</td><td>TERMINAL JOINER</td></tr> <tr><td>TR</td><td>TRANSFORMER</td></tr> <tr><td>UC8</td><td>UNIT CONTROLLER-8</td></tr> <tr><td>IBB1 L1</td><td>L1 LINE SUPPLY</td></tr> <tr><td>L2</td><td>L2 LINE SUPPLY</td></tr> <tr><td>L3</td><td>L3 LINE SUPPLY</td></tr> </tbody> </table>		24VCB	24 VOLT CIRCUIT BREAKER	CAP	CAPACITOR	CCB	CONTROL CIRCUIT BREAKER	CCH	CRANKCASE HEATER	CMC	COMPRESSOR CONTACTOR	CMCB	COMPRESSOR CIRCUIT BREAKER	CMIM	COMPRESSOR MOTOR	CMOL	COMPRESSOR OVERLOAD	EEV	ELECTRONIC EXPANSION VALVE	ETH	EARTH	FRB	FAULT RELAY BOARD	JEC	INDOOR FAN CONTACTOR	JFCB	INDOOR FAN CIRCUIT BREAKER	JFM	INDOOR FAN MOTOR	JFO	INDOOR FAN OVERLOAD	JFB	INSULATED BUS BAR	MIS	MAIN ISOLATOR SWITCH	OIECB	OUTDOOR FAN CIRCUIT BREAKER	OEM	OUTDOOR FAN MOTOR	PEC	POWER FACTOR CORRECTION	PLRC	PHASE LOSS RELAY CONTACT	PLR	PHASE LOSS RELAY	RV	REVERSING VALVE	SPS	SINGLE PHASE SOCKET	SPSCB	SINGLE PHASE SOCKET CIRCUIT BREAKER	TB	TERMINAL BLOCK	TFC	TRIAC FAN CONTROLLER	TJ	TERMINAL JOINER	TR	TRANSFORMER	UC8	UNIT CONTROLLER-8	IBB1 L1	L1 LINE SUPPLY	L2	L2 LINE SUPPLY	L3	L3 LINE SUPPLY	<table border="1" style="width:100%; border-collapse: collapse;"> <thead> <tr> <th colspan="3">UC8 DIP switch settings (No.1)</th> </tr> <tr> <th>DIP switch</th> <th>On/Off</th> <th>On/Off</th> </tr> </thead> <tbody> <tr> <td>1,4,5,7,10</td> <td>On</td> <td>On</td> </tr> <tr> <td>All Others Off</td> <td>Off</td> <td>Off</td> </tr> </tbody> </table>		UC8 DIP switch settings (No.1)			DIP switch	On/Off	On/Off	1,4,5,7,10	On	On	All Others Off	Off	Off
24VCB	24 VOLT CIRCUIT BREAKER																																																																																	
CAP	CAPACITOR																																																																																	
CCB	CONTROL CIRCUIT BREAKER																																																																																	
CCH	CRANKCASE HEATER																																																																																	
CMC	COMPRESSOR CONTACTOR																																																																																	
CMCB	COMPRESSOR CIRCUIT BREAKER																																																																																	
CMIM	COMPRESSOR MOTOR																																																																																	
CMOL	COMPRESSOR OVERLOAD																																																																																	
EEV	ELECTRONIC EXPANSION VALVE																																																																																	
ETH	EARTH																																																																																	
FRB	FAULT RELAY BOARD																																																																																	
JEC	INDOOR FAN CONTACTOR																																																																																	
JFCB	INDOOR FAN CIRCUIT BREAKER																																																																																	
JFM	INDOOR FAN MOTOR																																																																																	
JFO	INDOOR FAN OVERLOAD																																																																																	
JFB	INSULATED BUS BAR																																																																																	
MIS	MAIN ISOLATOR SWITCH																																																																																	
OIECB	OUTDOOR FAN CIRCUIT BREAKER																																																																																	
OEM	OUTDOOR FAN MOTOR																																																																																	
PEC	POWER FACTOR CORRECTION																																																																																	
PLRC	PHASE LOSS RELAY CONTACT																																																																																	
PLR	PHASE LOSS RELAY																																																																																	
RV	REVERSING VALVE																																																																																	
SPS	SINGLE PHASE SOCKET																																																																																	
SPSCB	SINGLE PHASE SOCKET CIRCUIT BREAKER																																																																																	
TB	TERMINAL BLOCK																																																																																	
TFC	TRIAC FAN CONTROLLER																																																																																	
TJ	TERMINAL JOINER																																																																																	
TR	TRANSFORMER																																																																																	
UC8	UNIT CONTROLLER-8																																																																																	
IBB1 L1	L1 LINE SUPPLY																																																																																	
L2	L2 LINE SUPPLY																																																																																	
L3	L3 LINE SUPPLY																																																																																	
UC8 DIP switch settings (No.1)																																																																																		
DIP switch	On/Off	On/Off																																																																																
1,4,5,7,10	On	On																																																																																
All Others Off	Off	Off																																																																																
D	<table border="1" style="width:100%; border-collapse: collapse;"> <thead> <tr> <th colspan="3">TFC DIP switch settings</th> </tr> <tr> <th>DIP switch</th> <th>On/Off</th> <th>On/Off</th> </tr> </thead> <tbody> <tr> <td>1, 2, 3, 4</td> <td>On</td> <td>Off</td> </tr> </tbody> </table>		TFC DIP switch settings			DIP switch	On/Off	On/Off	1, 2, 3, 4	On	Off	<p>UC8 DIP switch settings (No.2)</p> <table border="1" style="width:100%; border-collapse: collapse;"> <thead> <tr> <th>DIP switch</th> <th>On/Off</th> <th>On/Off</th> </tr> </thead> <tbody> <tr> <td>1,4,5,7,10</td> <td>On</td> <td>On</td> </tr> <tr> <td>All Others Off</td> <td>Off</td> <td>Off</td> </tr> </tbody> </table>		DIP switch	On/Off	On/Off	1,4,5,7,10	On	On	All Others Off	Off	Off																																																												
TFC DIP switch settings																																																																																		
DIP switch	On/Off	On/Off																																																																																
1, 2, 3, 4	On	Off																																																																																
DIP switch	On/Off	On/Off																																																																																
1,4,5,7,10	On	On																																																																																
All Others Off	Off	Off																																																																																
E	<table border="1" style="width:100%; border-collapse: collapse;"> <thead> <tr> <th colspan="3">UC8 DIP switch settings (No.2)</th> </tr> <tr> <th>DIP switch</th> <th>On/Off</th> <th>On/Off</th> </tr> </thead> <tbody> <tr> <td>1,4,5,7,10</td> <td>On</td> <td>On</td> </tr> <tr> <td>All Others Off</td> <td>Off</td> <td>Off</td> </tr> </tbody> </table>		UC8 DIP switch settings (No.2)			DIP switch	On/Off	On/Off	1,4,5,7,10	On	On	All Others Off	Off	Off	<p>UC8 DIP switch settings (No.2)</p> <table border="1" style="width:100%; border-collapse: collapse;"> <thead> <tr> <th>DIP switch</th> <th>On/Off</th> <th>On/Off</th> </tr> </thead> <tbody> <tr> <td>1,4,5,7,10</td> <td>On</td> <td>On</td> </tr> <tr> <td>All Others Off</td> <td>Off</td> <td>Off</td> </tr> </tbody> </table>		DIP switch	On/Off	On/Off	1,4,5,7,10	On	On	All Others Off	Off	Off																																																									
UC8 DIP switch settings (No.2)																																																																																		
DIP switch	On/Off	On/Off																																																																																
1,4,5,7,10	On	On																																																																																
All Others Off	Off	Off																																																																																
DIP switch	On/Off	On/Off																																																																																
1,4,5,7,10	On	On																																																																																
All Others Off	Off	Off																																																																																
F	<table border="1" style="width:100%; border-collapse: collapse;"> <thead> <tr> <th>REV</th> <th>DESCRIPTION</th> <th>ECN</th> <th>DATE</th> <th>APPROVED</th> </tr> </thead> <tbody> <tr> <td>D</td> <td>OFM capacitors changed to have fly leads</td> <td>N4351</td> <td>17-03-21</td> <td>R.P.B.</td> </tr> </tbody> </table>		REV	DESCRIPTION	ECN	DATE	APPROVED	D	OFM capacitors changed to have fly leads	N4351	17-03-21	R.P.B.	<p>©temperzone Ltd 2016</p>																																																																					
REV	DESCRIPTION	ECN	DATE	APPROVED																																																																														
D	OFM capacitors changed to have fly leads	N4351	17-03-21	R.P.B.																																																																														
Client Wiring		DO NOT SCALE - ASK		Client Wiring																																																																														
Date: 24-11-16		Date: 24-11-16		Date: 24-11-16																																																																														
Drawn: P.J.L		Drawn: P.J.L		Drawn: P.J.L																																																																														
Approved: P.J.L		Approved: P.J.L		Approved: P.J.L																																																																														
Title: OPA 550RKTB UC8 Wiring Schematic		Title: OPA 550RKTB UC8 Wiring Schematic		Title: OPA 550RKTB UC8 Wiring Schematic																																																																														
Drawing No: 291-002-165 SHEET 2 OF 2		Drawing No: 291-002-165 SHEET 2 OF 2		Drawing No: 291-002-165 SHEET 2 OF 2																																																																														
Rev: D		Rev: D		Rev: D																																																																														