

SPECIFICATIONS



Indoor Unit	(525-161-711)	ISDL 87KYX
Outdoor Unit	(526-171-311)	OSA 87RKSH
Cooling capacity (net) to AS/NZS 3823 T1		8.3 kW
Heating capacity H1		7.8 kW
Electrical input - cooling		2.5 kW
Electrical input - heating		2.3 kW
EER / AEER (cooling)		3.33 / 3.23
Unit Controllers		UC8 / IUC
Refrigerant		R410A
Refrigerant precharge for 10 m		3.65 kg *
Additional charge req'd for over 10 m		50 g/m
Base refrigerant charge ISDL/OSA system		2.65 kg
Maximum line length		40 m
Separation limit: OSA above ISDL		20 m
Separation limit: OSA below ISDL		20 m
Suction line		16 mm OD
Liquid line		9.5 mm OD
Compressor oil type		POE 32-3MAF (or equivalent)
Additional oil charge over standard line length		10 ml/m
Compressor type		scroll
Power supply via OSA		1 ph. 220–240V ac 50Hz
Compressor run amps at rating cond.		9.2 A
Compressor run capacitor		60 μ fd
Indoor fan motor size		230 W (x2)
Indoor fan motor (1ph.) - full load		1.5 A
Rated indoor fan speed		MED
Outdoor fan motor (1ph.) - full load		1.1 A
Outdoor fan capacitor size		5 μ fd
Control circuit breaker (internal)		10 A
Running amps (total system)		11 A
Max. running amps (total system)		17.3 A
Net weight ISDL		58 kg
Net weight OSA		90 kg

Accessories:

ISDL Spring mounting kit	307-161-101
ISDL filter EU2/G2 rated <small>(NZ only)</small>	119-000-102 (x2)
OSA Drain connection adaptor 25/13mm	060-000-039
OSA Anti-vibration mounts - rubber (x4)	060-000-170

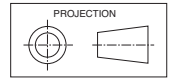
Optional Controls:

SAT-3 Room temperature controller	201-000-146
TZT-100 Room temperature controller	201-000-350

Refer to temperzone for other options, eg remote sensors, connection wires.

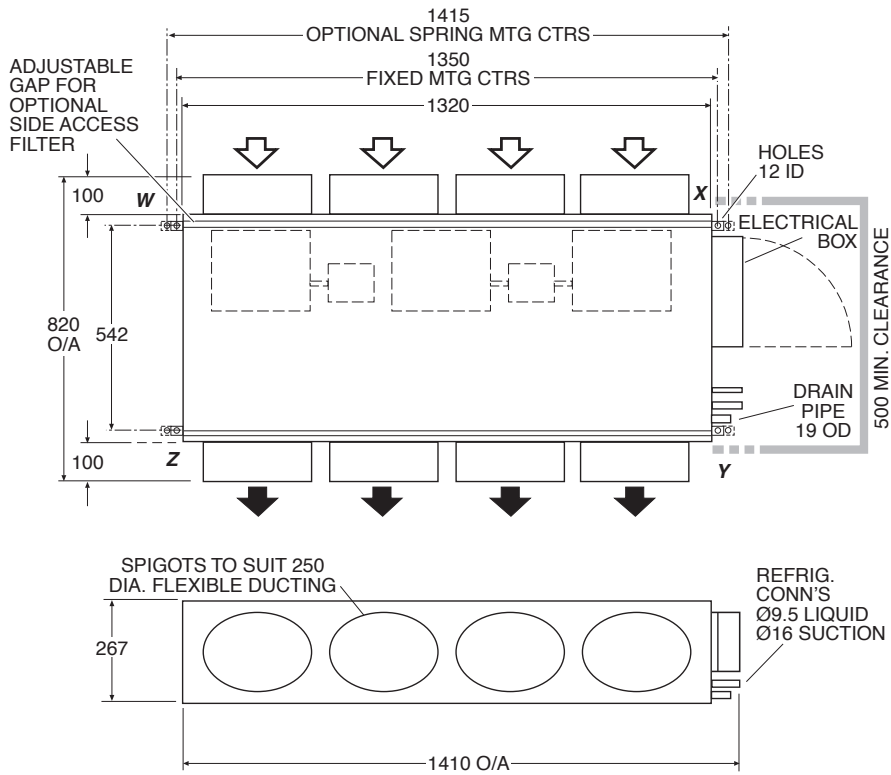
* **Note:** Remove 500 g from precharge for this ISDL/OSA combination.
Other unit combinations use the full precharge.

DIMENSIONS (mm)



Not to Scale

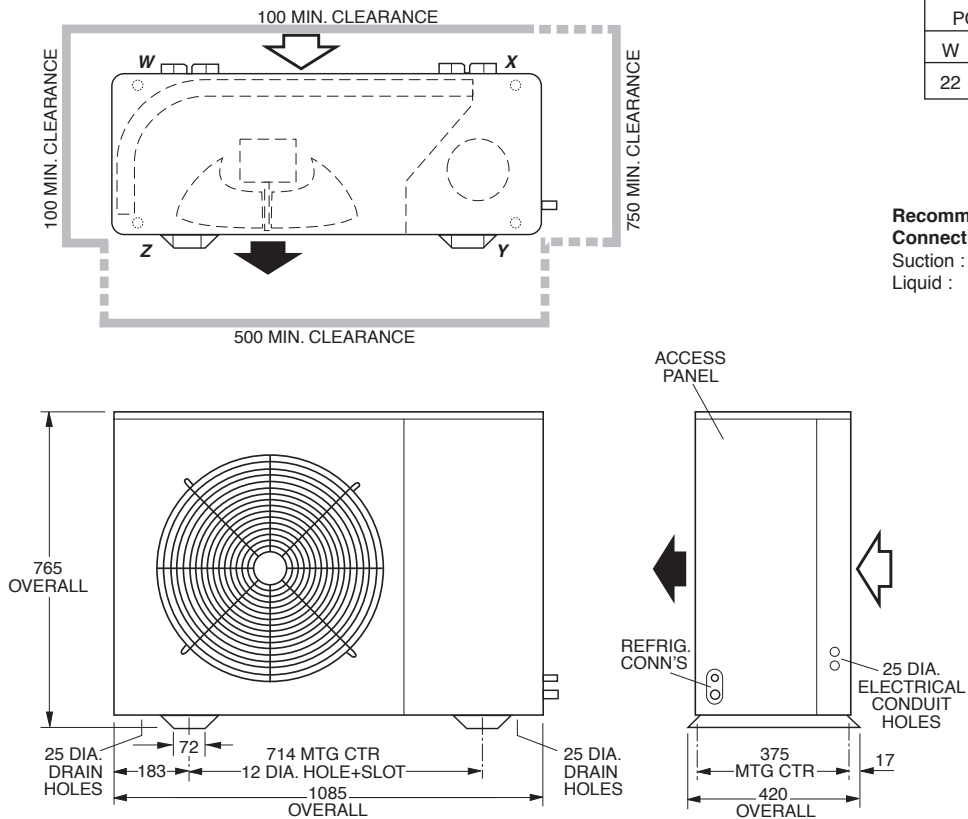
ISDL 87KYX Indoor Unit



POINT LOADS (kg)			
W	X	Y	Z
11	14	17	17

Note: Fan motor can be accessed from panel above, below or sides; no more than two panels at once.

OSA 87RKSH Outdoor Unit



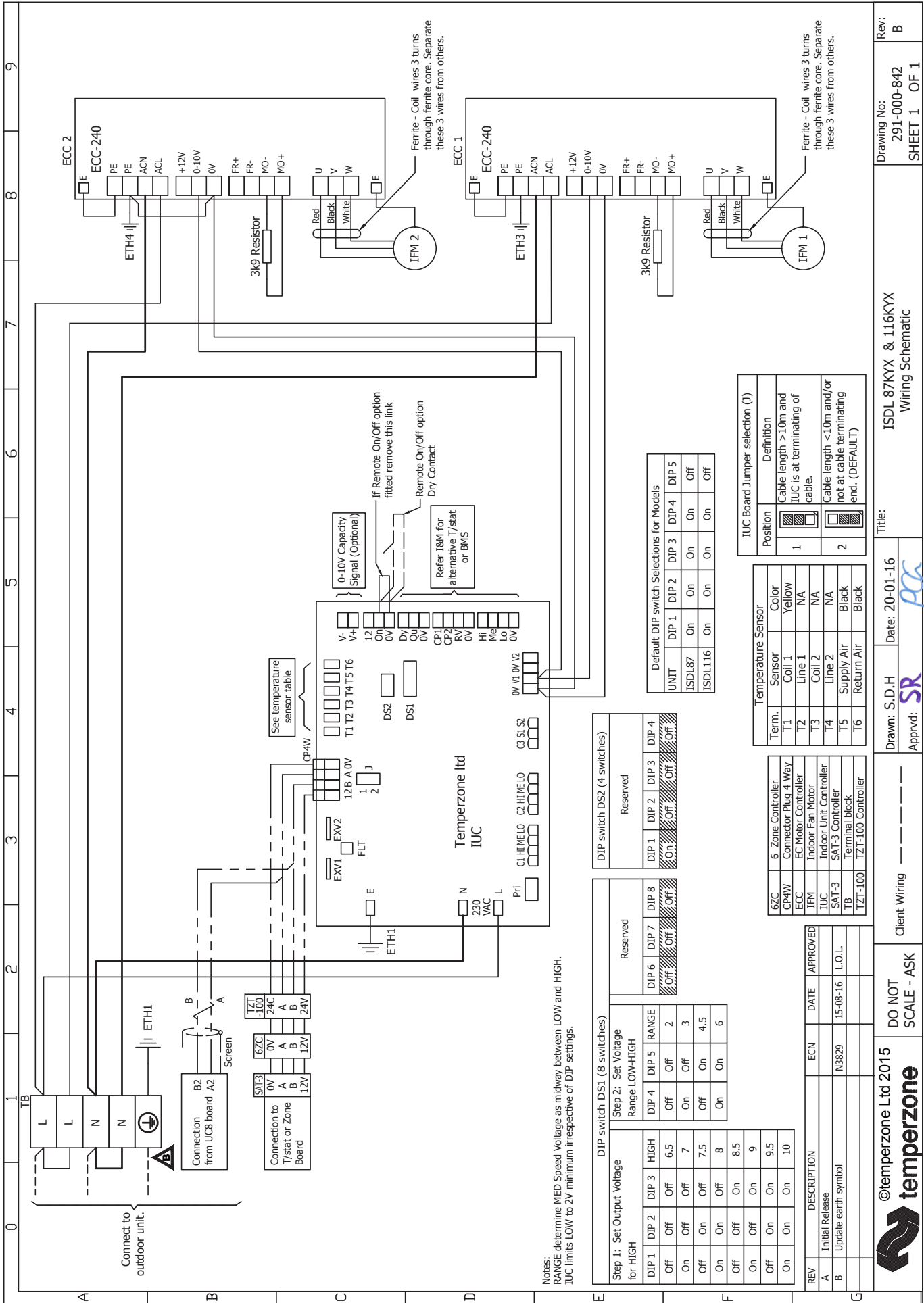
POINT LOADS (kg)			
W	X	Y	Z
22	23	37	8

Recommended Connecting Pipe Sizes
 Suction : 16 mm OD
 Liquid : 9.5 mm OD

NOTE

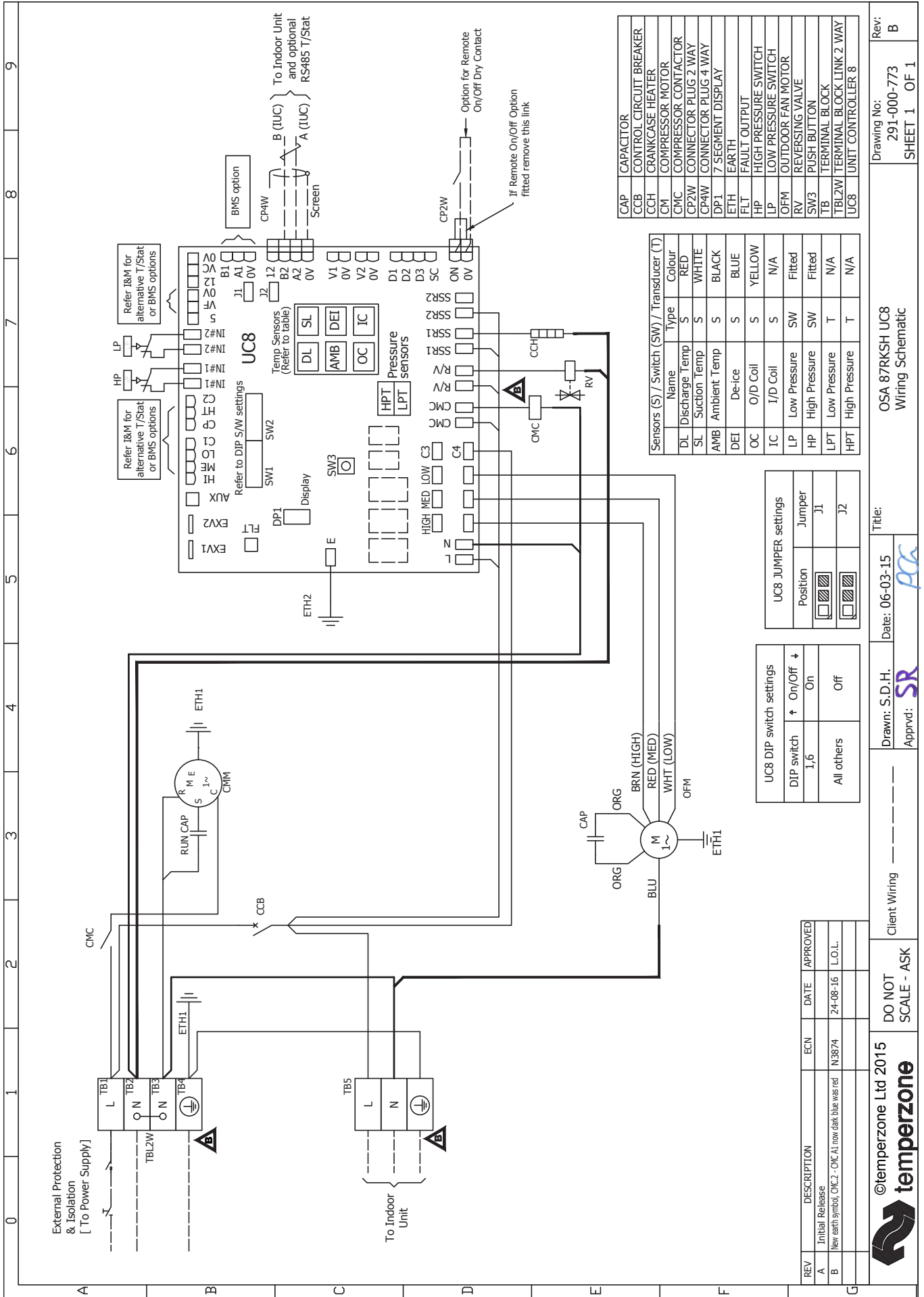
Specifications are subject to change without notice due to the manufacturer's ongoing research and development programme.





OUTDOOR UNIT WIRING

Indoor-Outdoor Connection Wiring: refer 'Installation & Maintenance' pamphlet, page 6.



CAP	CAPACITOR
CCB	CONTROL CIRCUIT BREAKER
CCH	CRANKCASE HEATER
CM	COMPRESSOR MOTOR
CMC	COMMON MODE CHOKE
CP2W	CONNECTOR PLUG 2-WAY
CP4W	CONNECTOR PLUG 4-WAY
DP1	7 SEGMENT DISPLAY
ETH	EARTH
FLT	FAULT OUTPUT
HP	HIGH PRESSURE SWITCH
LP	LOW PRESSURE SWITCH
OFM	OUTDOOR FAN MOTOR
RV	REVERSING VALVE
SW3	PUSH BUTTON
TB	TERMINAL BLOCK
TBL2W	TERMINAL BLOCK LINK 2-WAY
UC8	UNIT CONTROLLER 8

Sensors (S) / Switch (SW) / Transducer (T)	Name	Type	Colour
DL	Discharge Temp	S	RED
SL	Suction Temp	S	WHITE
AMB	Ambient Temp	S	BLACK
DEI	De-ice	S	BLUE
OC	O/D Coil	S	YELLOW
IC	I/D Coil	S	N/A
LP	Low Pressure	SW	Fitted
HP	High Pressure	SW	Fitted
LPT	Low Pressure	T	N/A
HPT	High Pressure	T	N/A

UC8 DIP switch settings	
DIP switch	On/Off
1,6	On
All others	Off

UC8 JUMPER settings	
Position	Jumper
J1	J1
J2	J2

REV	DESCRIPTION	ECN	DATE	APPROVED
A	Initial Release			
B	New earth symbol, CMC 2 - CMC A1 now dark blue was red	N.3874	24-08-16	L.O.L.

temperzone
 ©temperzone Ltd 2015
 Client Wiring
 Drawn: S.D.H.
 Date: 06-03-15
 Title: OSA 87RKSH UC8 Wiring Schematic
 Drawing No: 291-000-773
 Rev: B
 SHEET 1 OF 1