

## 6 Zone Control Kit

### for ISD 116–324KYX, ISD 171–351LYX Air Conditioners

### Installation Instructions

#### GENERAL

The **temperzone** Zone Control kit is a retrofit option to allow up to 6 zone dampers to be controlled from the **temperzone** SAT-3 wall plaque. It is compatible with standard 24 volt drive open/drive closed damper motors, and ISD 116–351 models only.

*R32 systems:* Consideration must be given to the minimum floor area required for the refrigerant in the system; refer 'R32 Handling' document supplied with OSA outdoor unit.

#### Components

1. Zone Control relay board c/w transformer on electrical box cover (part no. 201-000-073).
2. Shielded twisted pair multi-core cable, 500mm (x1).
3. Installation Instructions.
4. SAT-3 & Six Zone Controller Installation Set-up Guide.
5. Zone grid label (x2) (020-001-268).
6. Zone description labels (x2) (020-001-269).

Check that all items of the kitset are supplied and no damage has occurred to the items.

#### Required but not supplied

1. SAT-3 Wall Plaque (201-000-146), and 4 core shielded twisted pair interface cable (also available from temperzone).
2. Drive open/drive closed zone dampers (24VAC, <250mA, 10 –120 sec operating time) and cables, eg Polyaire Zonemaster Neat damper with green motor.
3. Remote temperature sensor/s c/w 5 m lead (Part no. 201-000-116).

#### Optional

1. Sensor lead extensions (1.5, 6 or 12 m).
2. Additional SAT-3 Wall Plaque (201-000-146).

#### INSTALLATION

1. Isolate the air conditioner from the power supply.
2. Hinge open the ISD unit's electrical box cover and disconnect the earth wire.
3. Remove the electrical box cover by undoing (but not removing) the hinge screws.
4. Replace this box cover with the 6 Zone Control box cover plate supplied, as shown below. Secure using the screws

5. previously undone.
5. Reconnect the earth wire to the new cover lid in the same position as the original cover.  
The original cover can now be discarded.
6. Connect the Zone Control board to the ISD unit's IUC board using the 500mm long wire supplied, as per the wiring schematic overleaf.  
NB Route the wire around the outside of the IUC board to avoid any potential electrical interference.
7. Connect Zone Kit's transformer Pr1 to IUC board terminal Pr1 using red/black wires supplied.
8. Connect the SAT-3 wall plaque to the Zone board using shielded 4 core twisted pair interface cable (supplied separately). Use one twisted pair for A & B and the other for 0V & 12V (see overleaf).
9. Connect each zone damper motor to the board as per the wiring diagram overleaf. For each zone Drive Open/Drive Close damper motor, terminals are provided. NB Connect via plug-in leads or 3 way plugs, but not both types at the same time. Do not connect more than one damper per zone output.
10. The SAT-3 Wall Plaque is equipped as standard with zone select buttons.
11. Stick the six zone grid label supplied inside on the flap of the Wall Plaque (over the printed wording).  
Use the zone description labels supplied or hand write an identifying description that suits your installation in each zone box.
12. For set-up and operation of the separate zones, refer to the 'SAT-3 & Six Zone Controller Installation Set-up Guide' and 'SAT-3 User Operating Instructions'.

#### Remote Air Temperature Sensor/s

A remote temperature sensor should be placed in each zone and connected to the corresponding input on the Zone Relay board.

Optionally, the Zone 1 temperature sensor can be omitted, in which case the wall plaque sensor will be used to control Zone 1.

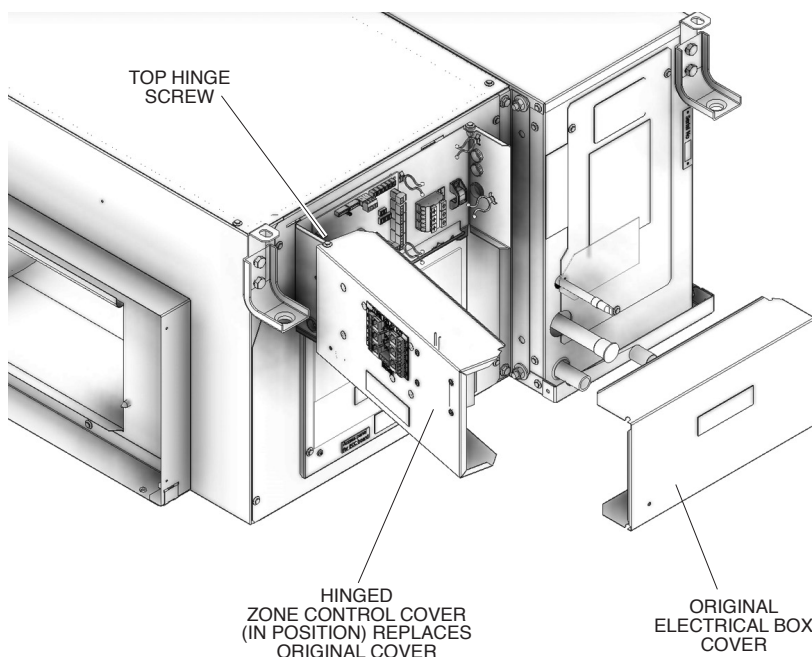
Refer to the separate installation instructions supplied with the SAT-3 for further details.

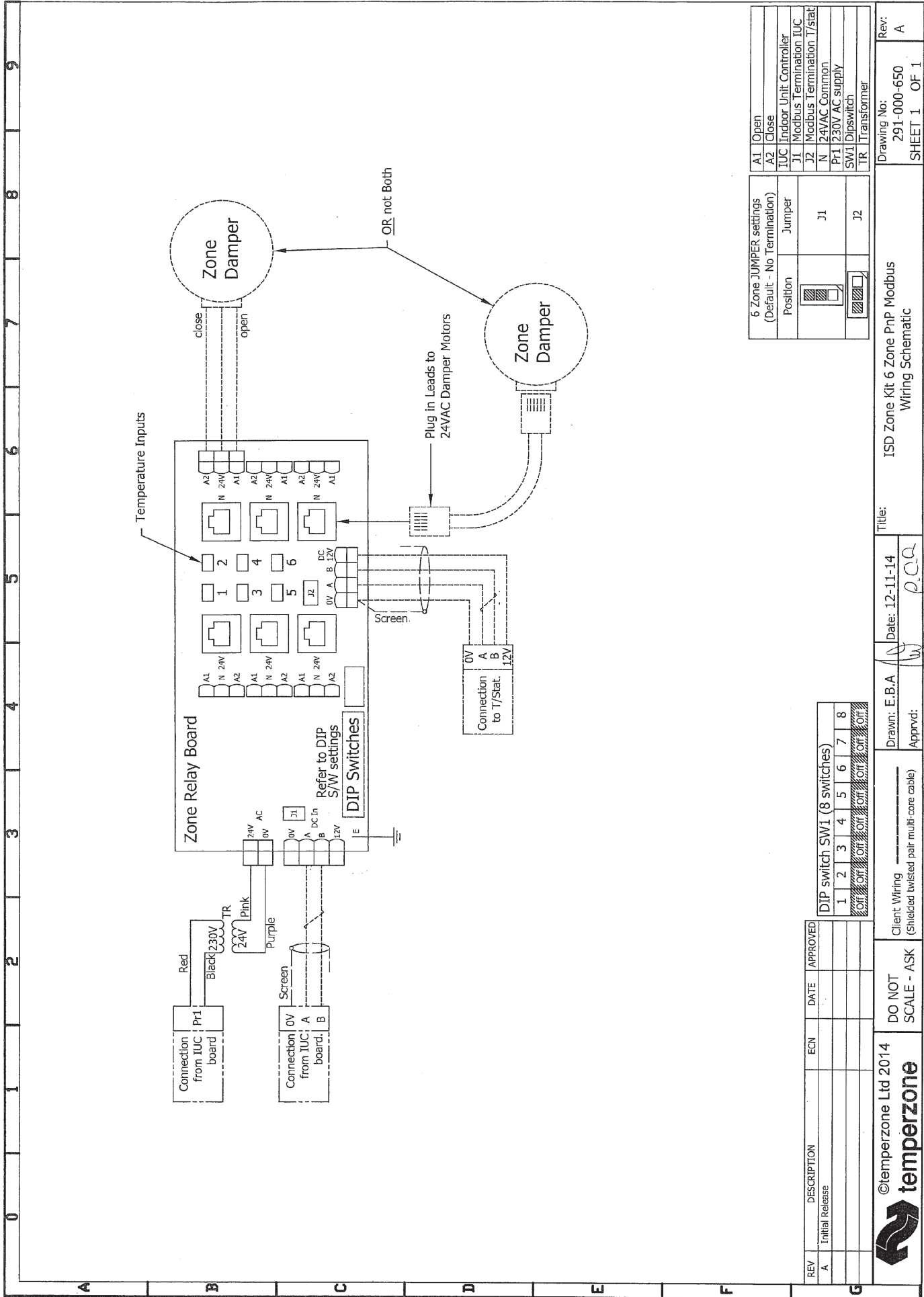
Ensure all remote sensor wires are run separately and away from main power supply wires, including the interconnecting cable between the ISD and OSA units.

#### NOTE

Specifications are subject to change without notice due to the manufacturer's ongoing research and development programme.

### Zone Control Kit Location





**NOTE:** Specifications are subject to change without notice due to the manufacturer's ongoing research and development programme.