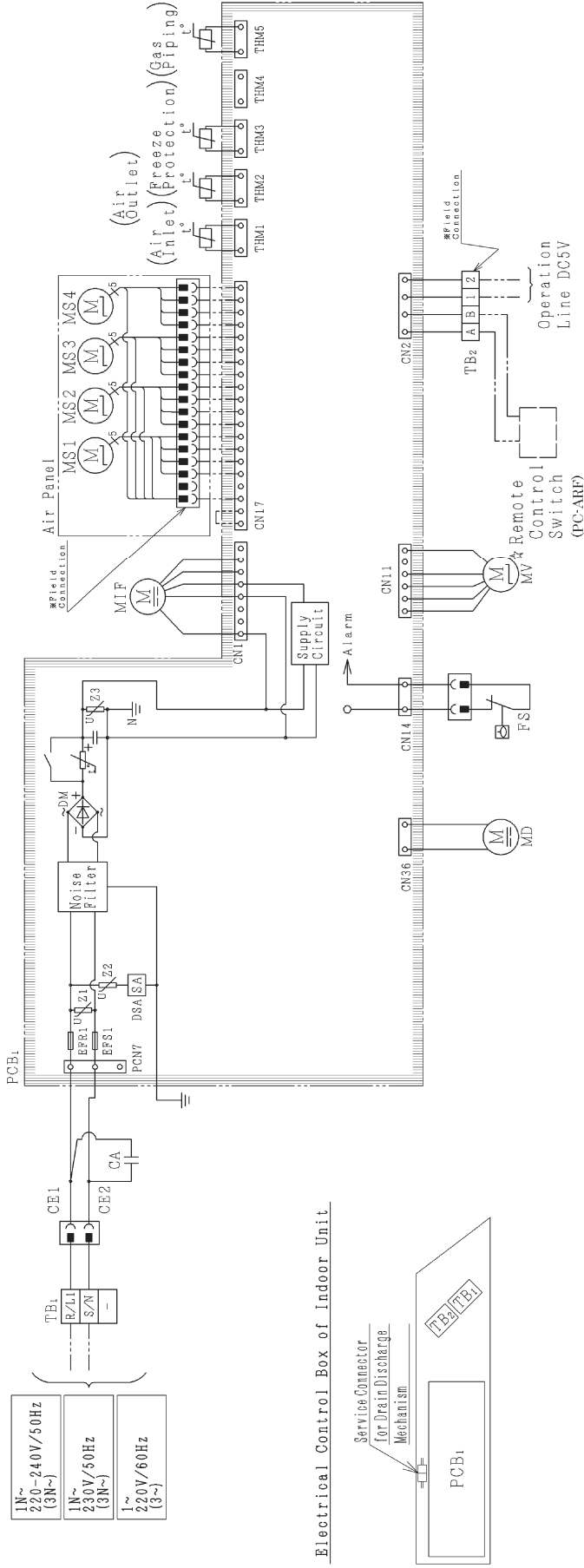
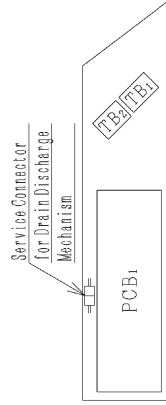


ELECTRICAL WIRING DIAGRAM (FOR MODELS: RCI-1.0FSN3, RCI-1.5FSN3, RCI-2.0FSN3, RCI-2.5FSN3, RCI-3.0FSN3, RCI-4.0FSN3, RCI-5.0FSN3 AND RCI-6.0FSN3 WITH AIR PANEL P-AP160NA1)

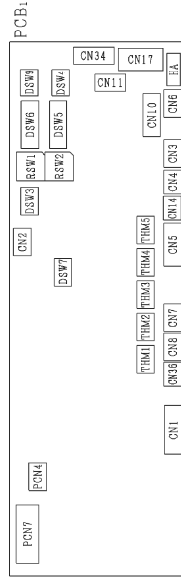


Electrical Control Box of Indoor Unit



- : Factory Wiring
- - - : Earth Wiring
- · · : Field Wiring
- ※ : Field Connection
- ☆ : Optional Parts

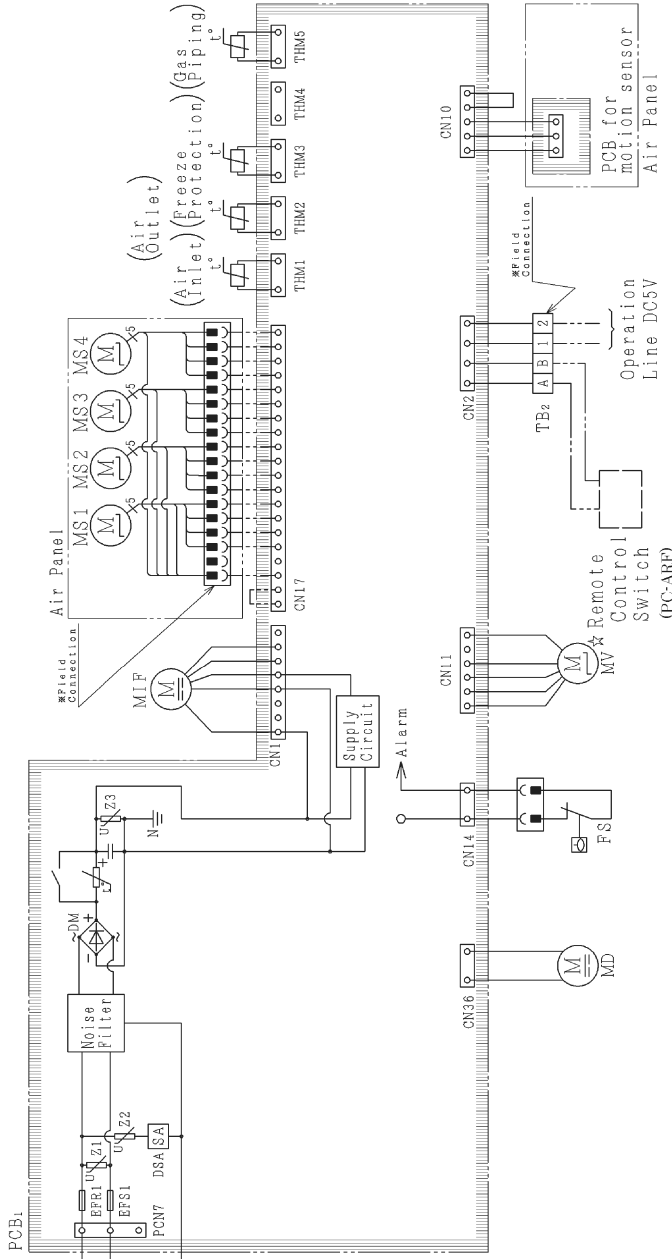
Printed Circuit Board



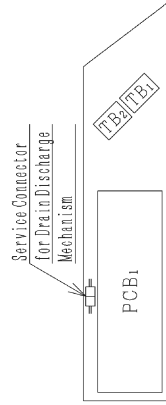
Note:
 1. All the field wiring and equipment must comply with local codes.

Mark	Name
CA	Capacitor
TB1.2	Terminal Board
PCB1	Printed Circuit Board
PCN4.7	Connector on PCB
CN1-36	Connector on PCB
RSW	Relay Switch
DSW3-a, SW1	Dip Switch for Setting
MV	Micro-Computer Control Expansion Valve
MIF	Motor for Indoor Fan
MS	Motor for Automatic Swing Louver
MD	Motor for Drain Discharge Mechanism
FS	Floater Switch
THM1-5	Thermistor
EFS1, EFS1	Fuse
◎	Terminals

ELECTRICAL WIRING DIAGRAM (FOR MODELS: RCI-1.0FSN3, RCI-1.5FSN3, RCI-2.0FSN3, RCI-2.5FSN3, RCI-3.0FSN3, RCI-4.0FSN3, RCI-5.0FSN3 AND RCI-6.0FSN3 WITH AIR PANEL P-AP160NAE)

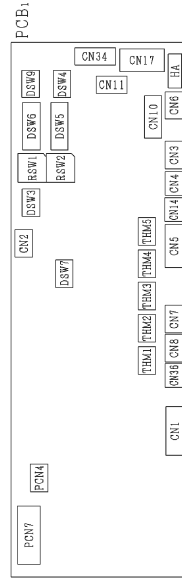


Electrical Control Box of Indoor Unit



- : Factory Wiring
- - - : Earth Wiring
- · - · : Field Wiring
- ※ : Field Connection
- ☆ : Optional Parts

Printed Circuit Board

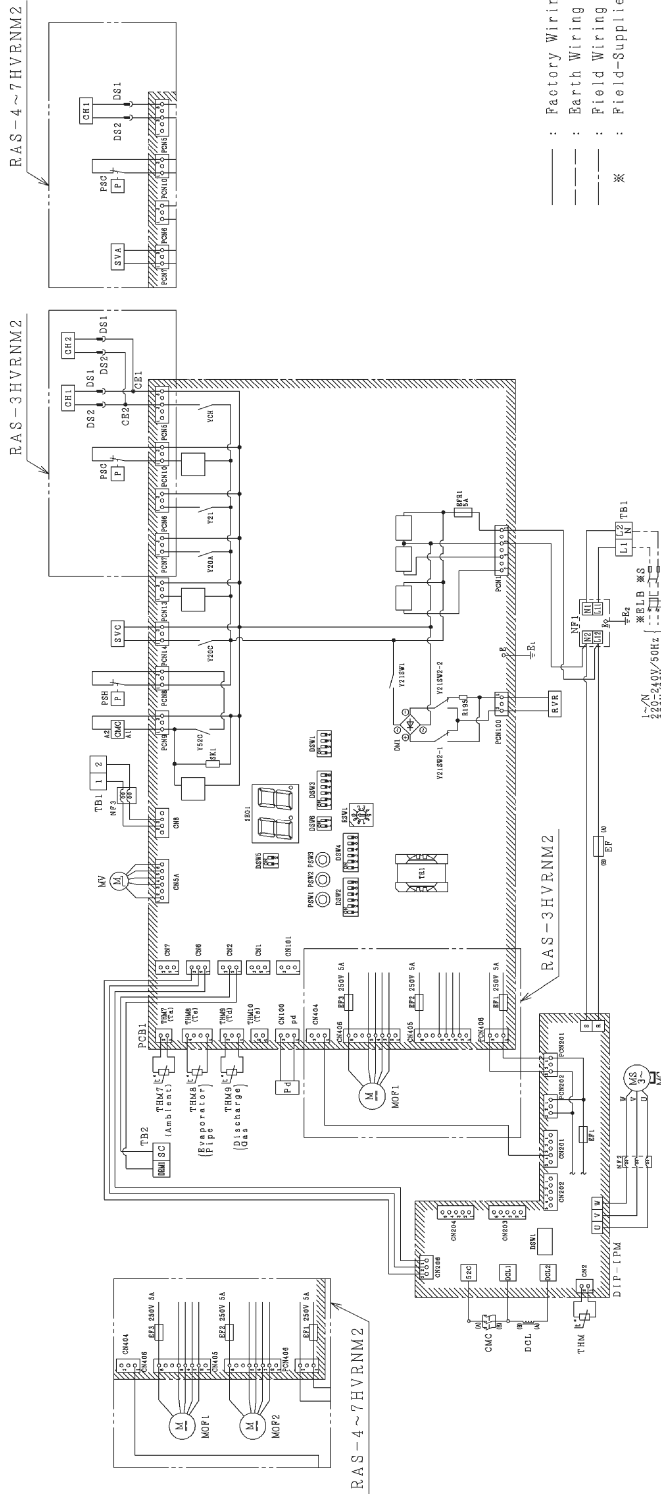


Note:
 1. All the field wiring and equipment must comply with local codes.

Mark	Name
CA	Capacitor
TB1, 2	Terminal Board
PCB1	Printed Circuit Board
PCN4, 7	Connector on PCB
CN1~36	Connector on PCB
RSW	Relay Switch
DSW3~9, SW1	Dip Switch for Setting
MV	Micro-Computer Control Expansion Valve
MIF	Motor for Indoor Fan
MS	Motor for Automatic Swing Louver
MD	Motor for Drain Discharge Mechanism
FS	Float Switch
THM1~5	Thermistor
EFB1, EFS1	Fuse
◎	Terminals

10.6.2 Outdoor Units

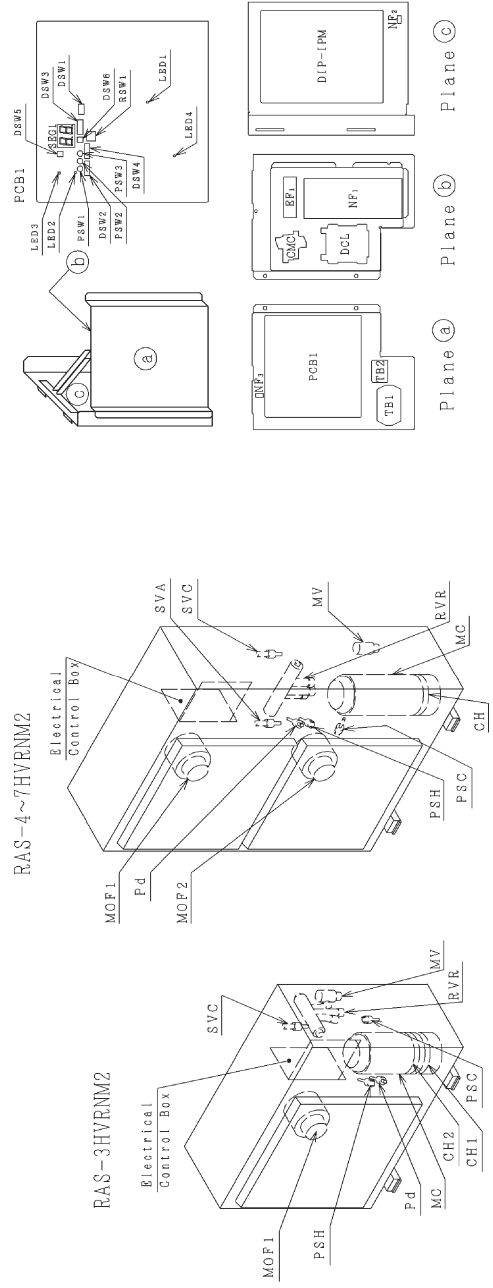
ELECTRICAL WIRING DIAGRAM (FOR MODELS: RAS-3HVRNM2, RAS-4HVRNM2, RAS-5HVRNM2, RAS-6HVRNM2 AND RAS-7HVRNM2)



Mark	Name
CH1, 2	Crankcase Heater
CMC	Contact for Compressor Motor
DCL	Reactor
DIP-IPM	Inverter Module
DS1, 2	I. P Connector
DSW1~6	Dip Switch on PCB1
BP	Fuse
MC	Motor for Compressor
MOF1, 2	Motor for Outdoor Fan
MV	Micro-Computer Control Expansion Valve
NF1~3	Noise Filter
PCB1	Printed Circuit Board
Pd	Sensor for Refrigerant Pressure
PSC	Pressure Switch for Control
PSH	High Pressure Switch for Protection
PSW1~3	Push Switch on PCB1
RSW1	Switch on PCB1
RVR	Reversing Valve Relay
SVA, C	Solenoid Valve
TBI, 2	Terminal Board
THM7~9	Thermistor
THM	Thermistor for Pin Temperature

— : Factory Wiring
 - - - : Barth Wiring
 --- : Field Wiring
 * : Field-Supplied

Electrical Control Box



Note:
 1. All the field wiring and equipment must comply with local codes.