

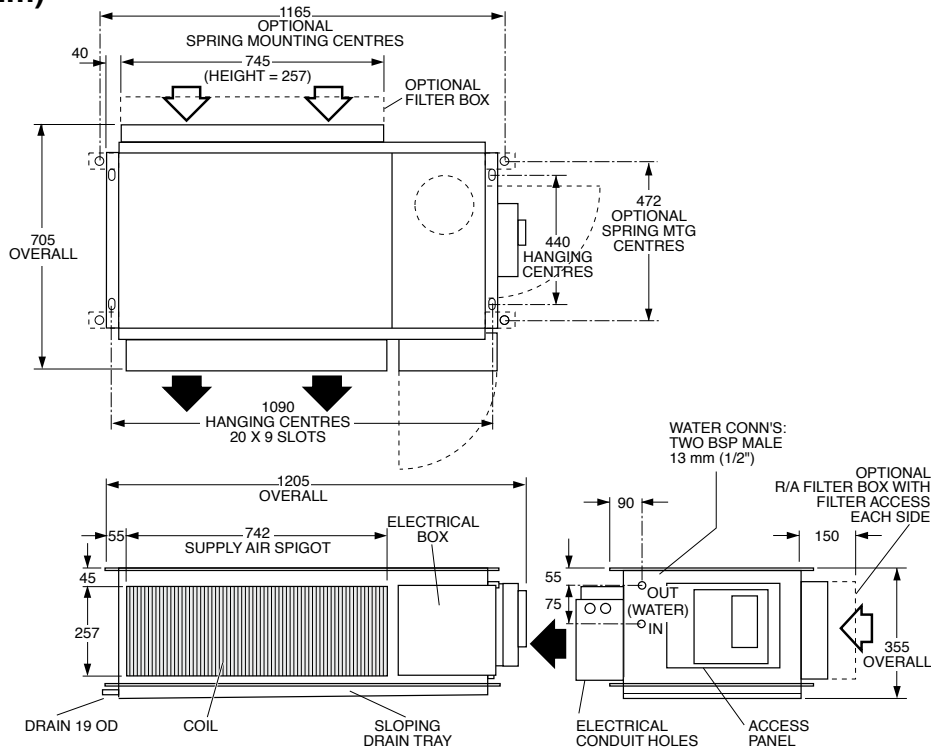
HWP 58KY (c/w EC Motor)

DATA SHEET

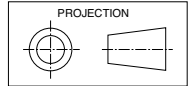
Ducted Water Cooled R410A Packaged Air Conditioners

Dimensions (mm)

Not to Scale



HWP 58KY



Net Weight 82 kg

COOLING CAPACITY (kW)

AIR FLOW RATE l/s	COIL E.A.T.		LEAVING WATER TEMPERATURE (L.W.T.) °C																							
	W.B. °C	D.B. °C	25				30				35				40				45				50			
			T	S	FL	HR	T	S	FL	HR	T	S	FL	HR	T	S	FL	HR	T	S	FL	HR	T	S	FL	HR
300	17	23	6.0	4.7	0.36	7.2	5.8	4.3	0.36	7.0	5.5	4.1	0.36	6.8	5.3	4.0	0.36	6.6	5.2	3.9	0.36	6.6	5.1	3.5	0.36	6.6
	19	27	6.5	4.7	0.36	7.6	6.4	4.6	0.36	7.7	5.9	4.6	0.36	7.2	5.7	4.3	0.36	7.1	5.3	4.3	0.36	6.7	5.2	4.2	0.36	6.7
	21	31	6.9	5.4	0.36	7.9	6.8	5.4	0.36	8.1	6.8	5.4	0.36	8.2	6.2	5.3	0.36	7.6	5.9	5.2	0.36	7.4	5.6	5.2	0.36	7.1

T = Total Capacity (kW)
FL = Water Flow (l/s)

S = Sensible Capacity (kW)
E.A.T. = Entering Air Temperature (°C)

HR = Heat Rejection (kW)
○ = Nominal Capacity (kW)

NOTE: Capacities are **gross** and do not include allowance for fan motor heat loss. For fan motor heat loss refer to Air Handling Performance. Water flow and cooling capacity based on 5 °C water temp. difference.

HEATING CAPACITY (kW)

HW*^R Reverse Cycle version

MODEL	WATER FLOW RATE l/s	COIL E.A.T. D.B. °C	LEAVING WATER TEMPERATURE (L.W.T.) °C											
			12.5				15.5				18.5			
			HC	HAb	EWT	INPT	HC	HAb	EWT	INPT	HC	HAb	EWT	INPT
HWP 58R	0.35	18	4.8	3.3	15.6	1.3	5.1	3.6	18.9	1.4	5.5	3.9	22.1	1.4
		21	4.7	3.2	15.6	1.4	5.1	3.4	18.8	1.5	5.4	3.7	22.1	1.5
		25	4.7	3.0	15.6	1.5	5.1	3.3	18.8	1.6	5.4	3.6	22.1	1.6

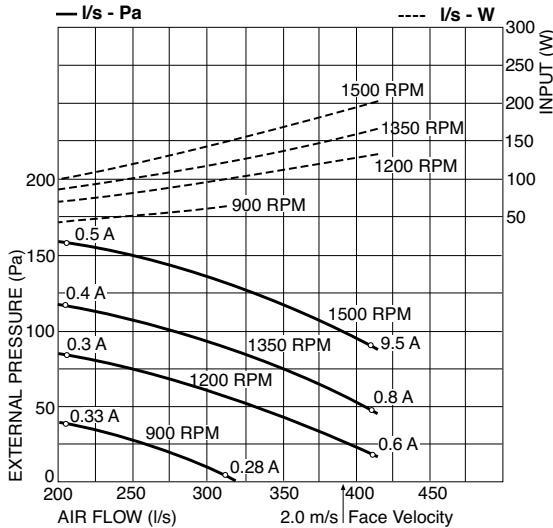
HC = Heating Capacity (kW)
HAb = Heat Absorbed (kW)

EWT = Entering Water Temperature (°C) (Minimum required 17°C)
INPT = Compressor Input (kW)
E.A.T. = Entering Air Temperature (°C)

○ = Nominal Capacity (kW)

AIR HANDLING PERFORMANCE

Without Filter



FILTER (clean)	Coil Face Velocity (m/s)	1.5	2.0	2.5
	Pressure Loss (Pa)	15	25	40

QUICK REFERENCE

HWP 58KY

Net Cooling Capacity *	5.54 kW
Electrical Input (Cooling)	1.57 kW
E.E.R. (Cooling)	3.53
EC Motor Range (standard)	900–1200 RPM
Max. Fan Speed	1500 RPM
Running Amps (Total) Rating/Max.	7.2 / 9.4
Electrical Supply Required	1 ph. 220-240V ±10% a.c. 50 Hz
Refrigerant	HFC-410A (R410A)
Minimum Water Flow	0.35 l/s
Water Coil Pressure Drop	55 kPa (8 psi)
Filter (EU2/G2 rated)	optional
Electric Heat Option	3 kW

* At AS/NZS 3823 conditions.

Note

1. In tropical (high humidity) conditions care must be taken to select an air flow which gives a suitable coil face air velocity, to prevent water carry over.
2. Applications using full or high proportions of fresh air should be referred to **temperzone** engineering office to establish the correct selection of units.

SOUND LEVELS

Note: SPL measured to JIS 8616 (1m from source in an anechoic chamber)

SUPPLY AIR + INSULATED DUCT

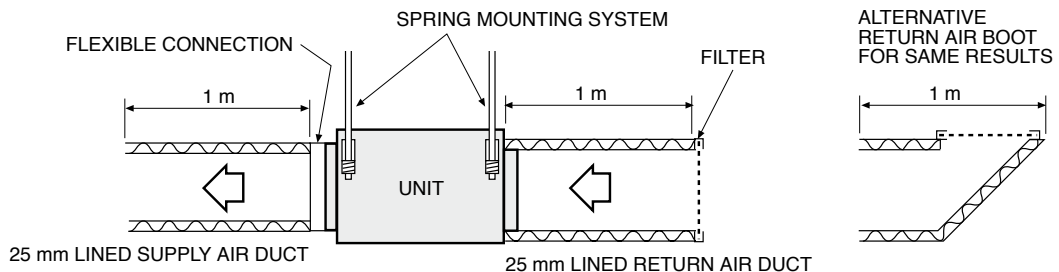
MODEL	FAN SPEED	AIR FLOW l/s	SOUND PRESSURE LEVELS (SPL) dB(A)	SOUND POWER LEVELS (SWL) dB						
				SWL dB(A)	OCTAVE BAND FREQ. Hz					
					125	250	500	1 k	2 k	4 k
HWP 58	900 RPM	280	43	48	59	51	46	38	33	23
	1000 RPM	335	44	50	58	54	49	41	33	28
	1200 RPM	360	46	53	61	55	52	46	34	32

SUPPLY AIR OUTLET

MODEL	FAN SPEED	AIR FLOW l/s	SOUND PRESSURE LEVELS (SPL) dB(A)	SOUND POWER LEVELS (SWL) dB						
				SWL dB(A)	OCTAVE BAND FREQ. Hz					
					125	250	500	1 k	2 k	4 k
HWP 58	900 RPM	280	47	54	62	54	50	48	45	37
	1000 RPM	335	48	56	61	56	53	52	48	41
	1200 RPM	360	51	59	62	58	56	55	51	45

CASE BREAKOUT + RETURN AIR

MODEL	FAN SPEED	AIR FLOW l/s	SOUND PRESSURE LEVELS (SPL) dB(A)	SOUND POWER LEVELS (SWL) dB						
				SWL dB(A)	OCTAVE BAND FREQ. Hz					
					125	250	500	1 k	2 k	4 k
HWP 58	900 RPM	280	48	55	63	59	52	48	43	36
	1000 RPM	335	53	60	66	61	57	54	52	46
	1200 RPM	360	54	61	67	61	58	55	54	47



Sound Pressure Levels (SPL) Within A Room

Deduct the room absorption effect below from the Sound Power Levels (SWL) above to obtain Sound Pressure Levels within a room. Note: Occupant at least 1.5 m from sound source.

ROOM TYPE	OCTAVE BAND FREQ. Hz					
	125	250	500	1k	2k	4k
	ROOM ABSORPTION EFFECT					
SOFT	4	8	11	11	11	11
MEDIUM	3	7	8	9	9	9
HARD	0	1	3	4	4	5

NOTE

The manufacturer reserves the right to change specifications at any time without notice or obligation. Certified data available on request.